



TRITON-D10™

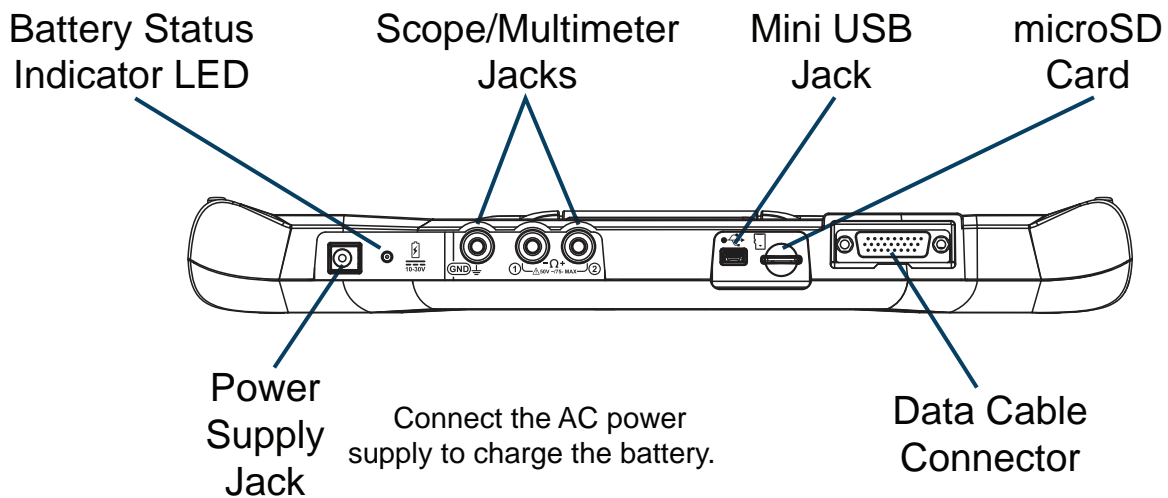
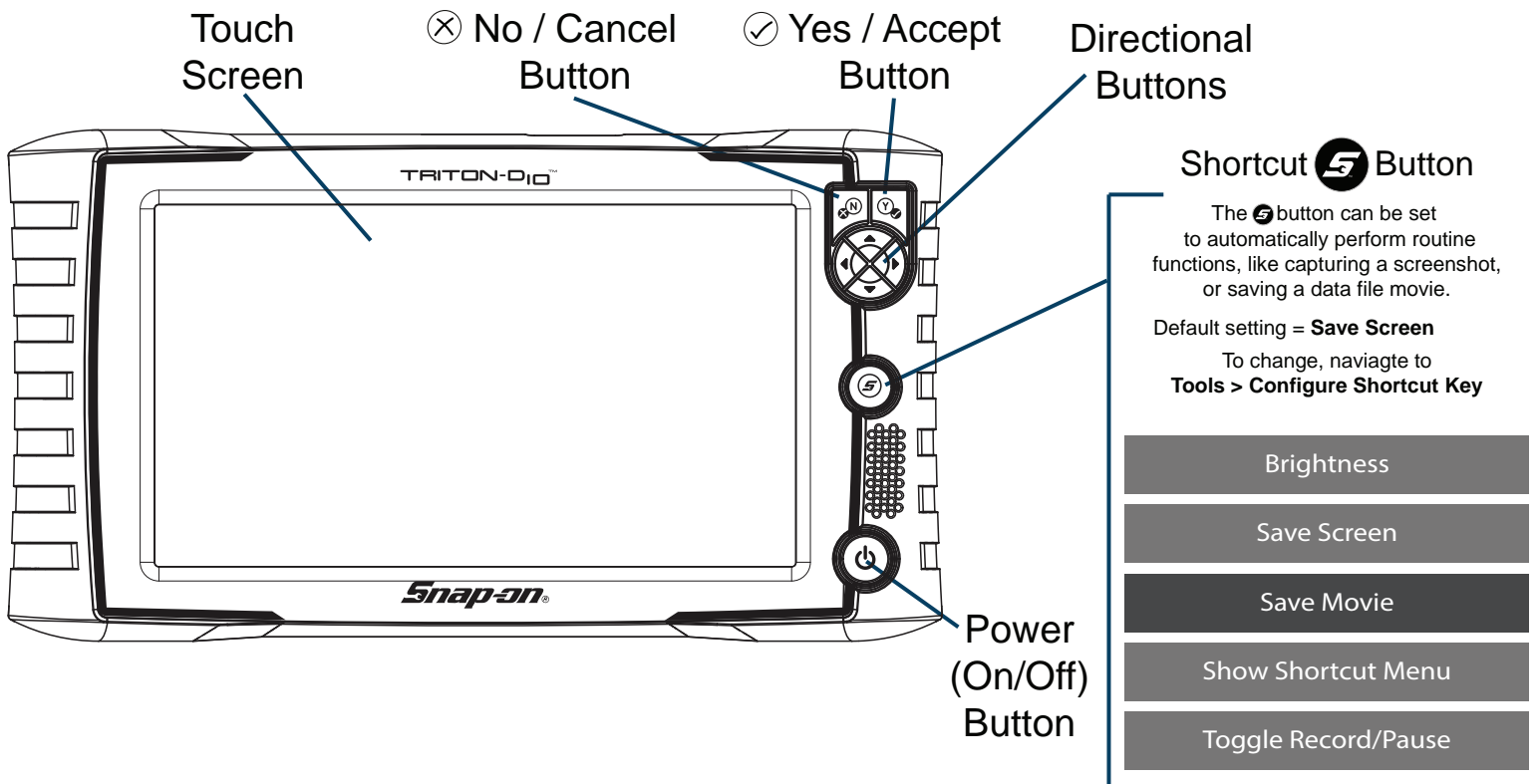
GETTING STARTED PACK



diagnostics.snapon.com/triton-d10



Feature Locations and Button



TRITON-D10™ Feature Spotlight

Intelligent Diagnostics - Access code-specific repair information, functional tests, OEM bulletins and Smart Data all in one menu.

Quick-Access Menu - Quickly jump between related functions (i.e. Scanner to Previous Vehicles and Data). To access, select the **Home** icon from a function screen after identifying the vehicle.

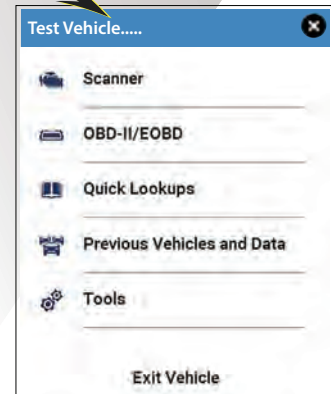
Vehicle Voltage Readout - View the vehicle's Data Link Connector (DLC) voltage in the title bar.

Ethernet Ready* - Connect and communicate with Ethernet equipped vehicles.

Instant ID (Auto VIN)* - Vehicle identification occurs automatically when the data cable is connected with the key on.

Wireless Software Upgrades - Wi-Fi connection is all it takes to get the latest vehicle coverage. Subscription based software upgrades are delivered directly to your tool.

* Supported vehicles only.



Snap-on® Cloud Wi-Fi Required

Automatically transfer code scans, ADAS recalibration reports, and screenshots to the Snap-on Cloud. Use your mobile device to print and share the files.

Getting Set Up

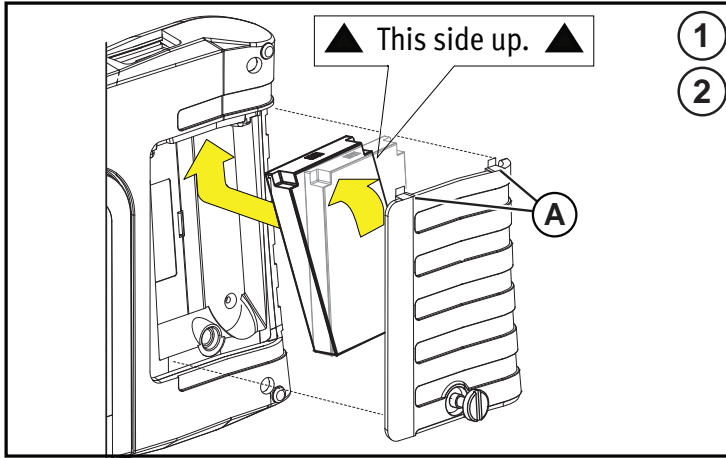
1. Connect the tool to a Wi-Fi network.
2. View the **Serial Number, PIN and Code** on the Get Connected screen (**Tools > Get Connected**).
3. Using a mobile device or PC, visit <https://ALTUSDRIVE.com> and select **Create Individual Account**.

Note - If you already have a SureTrack account, use your credentials to login and "Add a Device", to link this tool to your account.

4. Enter the required information and create a **Username and Password**, then select **Create**.
5. At the "Success" confirmation screen, select **Done**.
6. Log in using your **Username and Password**.
7. Answer the security questions, then select **Submit**.
8. From Technician Profile Manager select the **Device Management** tab.
9. Select **Add Device**, enter your **Serial Number, PIN, Code**, and **Device Name**.
10. Log out of **Profile Manager**, then select the **ALTUS Home Page** browser tab to get started.

Note - A link is provided at the bottom of the ALTUSDRIVE home page to access ShopStream Connect™ (SSC). SSC allows you to transfer and manage scanner and scope data files using your PC.

Getting Started



1. Remove the battery pack cover, and install the battery pack (as shown) with the arrows facing up. Tilt the top of the battery in to align the tabs, then down to install.



2. Install the battery pack cover, aligning the tabs (A). Then tighten the screws.

Note - Do not overtighten the screws.



3. Connect the AC power supply.

4. Press the **Power**  button.

 *****IMPORTANT***** 
Turn Wi-Fi on to receive software updates, use Intelligent Diagnostics, and Quick Lookups.



5. To turn Wi-Fi on:

a. From the Home screen, select **Tools > Settings > Configure Wi-Fi**.

b. Turn **Wi-Fi**  on.

c. **Connect** to a wireless network.

6. To scan a vehicle:

a. Turn ignition on.

b. Connect the Data Cable to the vehicle and tool.

c. Follow Instant ID prompts, or select **Scanner** and identify the vehicle.

d. Follow the prompts to select a system and test.




Tips:

- Connecting to the vehicle's DLC, powers the tool.
- Vehicle DLC voltage is displayed on the title bar.



Scanner

Scanner makes vehicle communication easy, by providing full scanning functionality including these features and more!

Intelligent Diagnostics -  Quickly find code-specific diagnostic information

Code Scan - Scan multiple systems in a single touch

Data Graphing - View multiple PID graphs at once for data comparison analysis

Tests/Resets - Perform functional component tests, and adaptive relearns

Scanner Basics

1. Turn the vehicle ignition switch on.
2. Connect the Data Cable to the vehicle and diagnostic tool.
3. Confirm the vehicle as prompted by Instant ID, or select **Scanner** from the Home screen to identify the vehicle.
4. Select a system (e.g. Code Scan, Engine, Transmission, Body, etc.).
5. Select a function/test (e.g. Codes Menu, Data Display, Functional Tests, etc.).

Demonstration

The built-in demonstration program includes a slide show Introduction to Intelligent Diagnostics, and allows you to interactively explore Scanner functions without actually connecting to a vehicle. The interactive demonstration allows you to navigate through Scanner operations, including vehicle identification, system selection, Code Scan, PID graphs, Intelligent Diagnostics and more!


1. Select **Scanner**, from the Home screen.
2. Select **Demonstration**, from the vehicle make menu.
3. Select **Chevrolet > 2016 > Tahoe (4WD) Demo > Tahoe 5.3 V8 (L83)**.
4. Select **OK**, to confirm the vehicle, then select **Continue** (demo mode confirmation message).
5. Select **Engine > Codes Menu > Display Codes > DTC Display**, to display the code results list.

From the code results list there are two demonstration options:

- a - Continue interactive demo, see [Intelligent Diagnostics Demonstration](#).
- b - View slide show, see [Introduction to Intelligent Diagnostics](#).


Introduction to Intelligent Diagnostics

The Introduction to Intelligent Diagnostics slide show helps you get familiar with the basic menus and code-specific features.

Select  to start the demo, and use the **Forward (>)** and **Back (<)** icons to view the slides.

Select **"X"** to exit and return to the codes results list screen.

Intelligent Diagnostics Demonstration

1. Select a code from the code results list.
2. Select  to display the Intelligent Diagnostics multi-card menu.

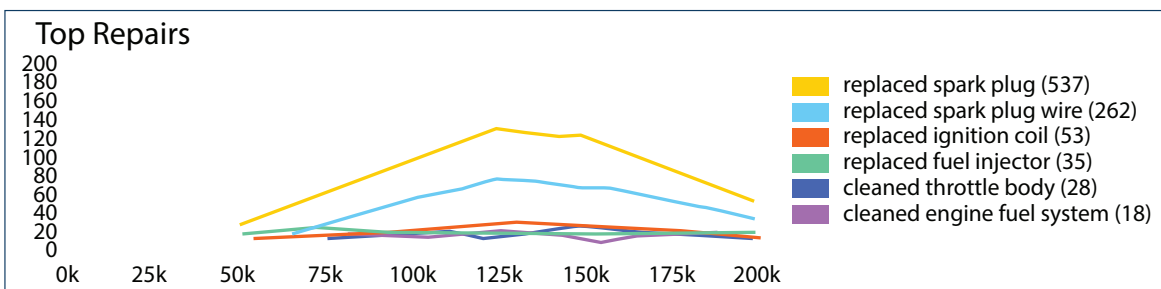


Wi-Fi required
to use
Intelligent Diagnostics.
Not required for Demo.

Intelligent Diagnostics gives you access to code-specific repair information, tests, OEM bulletins and Smart Data tests all in one menu. Use the dropdown menu to change the active code.



Top Repairs Graph - Displays the most likely repairs and probable causes for the selected code.



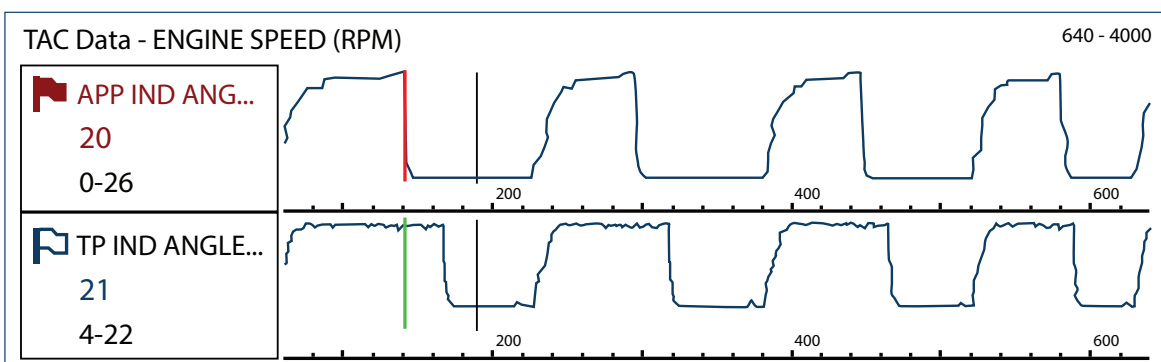
Technical Service Bulletins (TSB's)

Displays TSB's, Campaigns and Recalls related to the selected code.



Smart Data

Displays a custom list of PIDs related to the selected code. Smart Data uses "real-world" data to preset the PIDs upper and lower trigger values (any PID with a flag has been preset and armed). Any PID that exceeds it's limits will change it's flag color from blue to red, indicating a potential issue.





Functional Tests & Reset Procedures - Displays code-specific list of bi-directional tests that can be used to verify component or system operation during troubleshooting.



Guided Component Test Meter - Displays code-specific tests for components and sensors, including step-by-step instructions.



SureTrack® Top Real Fix - Displays the Top Real Fix for the code.



Real Fixes - Displays repair procedures, tests and tips related to the code.



Troubleshooter Displays troubleshooter tips related to the selected code.



Scope Multimeter

Measure waveforms, test circuits and components using the built-in 2-channel Lab Scope, Graphing Multimeter (GMM), and Digital Multimeter (DMM). Pre-configured tests include these and more!

- Volts DC
- Volts AC RMS
- Ohms
- Diode Continuity
- Pressure and Vacuum
- Low Amps (20,40 and 60)
- Duty Cycle
- Injector Pulse Width
- Pulse Width
- Frequency



Quick Lookups



Quick Lookups makes finding valuable OEM service information and functional scanner resets easy!

Oil Specs and Resets:

Lookup engine oil specifications and reset the service interval.

- Capacity Information and Specifications
- Scanner Reset of Service Interval
- OEM Reset Procedures and Information

Tire and Wheel Service:

Perform TPMS functional tests and indicator resets. View reset/repair procedures and tire fitment specifications.

- Reset Procedures and Information
- Repair Procedures
- Scanner Reset of Service Indicator
- Tire Fitment Specifications



Guided Component Tests


Perform vehicle specific component tests, using guided instructions to help you verify component integrity and validate repairs. Vehicle information may include:

- **Component testing instructions and locations**
- **Waveform examples**
- **Illustrated connectors with pinouts**
- **Diagnostic references**

CKP Sensor Signal Test (Example)

1. Select **Guided Component Tests** from the Home screen.
2. Select **Chevrolet > 2010 > Camaro > 3.6L VIN V**
3. Select **OK**, then **Engine > CKP Sensor > Signature Test**

A pre-configured test screen appears with test lead connection instructions, and an example of a known good waveform.

Select  to toggle between guided instructions and the test screen.

Select **Training and Classes** from the Guided Component Tests vehicle make menu to access the following reference information:

- **How To Guide** - Find theory, troubleshooting, and testing information
- **Power User Tests** - Quickly access pre-configured tests
- **Features and Benefits** - Provides feature and accessory information.



OBD-II / EOBD

Quickly access global OBD-II/EOBD codes, tests, and data without having to identify the vehicle.

Menu Options:

- **OBD Direct** - access OBD-II/EOBD service modes (e.g. \$01 to \$0A), allowing you to view current diagnostic trouble codes, parameter data, freeze frame information, O2 sensor monitoring test results, check calibration numbers, and more!
- **OBD-II Health Check** - quickly check or clear diagnostic trouble codes, check readiness monitor status, and MIL status.



Training and Support

Find information about Training and Support here.

Customer Support

Phone: (800) 424-7226

Email: diagnostics_support@snapon.com

Website: diagnostics.snapon.com



Safety Information / User Manual

Before using this diagnostic tool, read and understand the *Important Safety Information* (included), and the *User Manual* (available online). Both documents are available at: diagnostics.snapon.com/usermanuals

Warranty Activation and Extension

To activate your warranty, and ensure you have access to the latest software upgrades, register your diagnostic tool today.

U.S. Customers: <https://registration.snapon.com/products/us>

Canadian Customers: <https://registration.snapon.com/products/ca>

Extended warranty protection is available for an additional 12, 24 or 36 months. Contact your local Snap-on representative for information.

Software Subscription Program

Snap-on is continually enhancing our diagnostic software to provide our customers with the latest information available, not only for new vehicles but for older vehicles as well. As revisions become available, we offer them in each new software release.

The Snap-on Software Subscription Program is the no-hassle, low-cost way to automatically get the latest codes, data, tests and exclusive coverage for thousands of new vehicle systems. To find out more, visit: diagnostics.snapon.com/theprogram

End User License Agreement / Patent Information

Use of the device acknowledges your acceptance of the End User License Agreement. The Snap-on Incorporated Software End User License Agreement is available at: <https://eula.snapon.com/diagnostics>

For a listing of Snap-on products that are protected by patents in the United States and elsewhere, visit: <https://patents.snapon.com>

Important Information

Before using this diagnostic tool, read and understand:

- The *Important Safety Information* - included in this kit
- The TRITON-D10™ *User Manual* - available online at:
diagnostics.snapon.com/usermanuals

Training *Solutions*® Online Training Videos

To maximize your productivity, Snap-on Training Solutions offers in-depth, multi-level training at no charge, available 24/7 at: diagnostics.snapon.com/trainingsolutions

Get the most from your new diagnostic tool.

The latest software upgrades are as close as your Snap-on Representative's van, or for more information visit: diagnostics.snapon.com

Snap-on is a trademark, registered in the United States and other countries, of Snap-on Incorporated. All other marks are trademarks or registered trademarks of their respective holders. ©2020 Snap-on Incorporated. All pictures and illustrations shown are for reference purposes only. All information including specifications herein are subject to change without notice. ZEEMS344A1 Rev. A

TRITON-D10™

The Snap-on logo is located in the bottom right corner of the page. It features the word "Snap-on" in a stylized, italicized font with a metallic, 3D effect. The letters are white with black outlines and shadows, giving it a sense of depth and texture. The logo is set against a red background.