




**FOR MORE INFORMATION ABOUT  
SNAP-ON SOFTWARE, VISIT:  
[SNAPON.COM/VCG](https://snapon.com/vcg) AND  
 [@SNAPONDIAGNOSTICS](https://www.youtube.com/@snapondiagnostics)**



***Snap-on***<sup>®</sup>



# DIAGNOSTIC SOFTWARE FROM SNAP-ON.®

Investing in a diagnostic platform helps you stay ahead of the game. Keeping your platform updated with the latest software ensures access to the most advanced features, content, and coverage.

## WHAT YOU GET WHEN YOU STAY UP TO DATE.

Vehicle and system coverage is constantly evolving, with regular updates to keep pace with vehicle and industry changes. Snap-on has you covered with more vehicle coverage than any other diagnostic tool in the industry, along with the breadth and depth of manufacturer-level capabilities for codes, data, and tests you need to keep you productive in the bay.

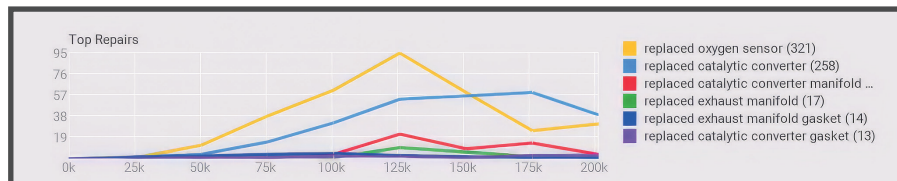
Consistent navigation and terminology across all makes, advanced data graphing capabilities, and fast access to the most frequently used specifications and capacities means with current software you are ready to tackle even the toughest jobs that may come your way.



# **ALL THIS AS STANDARD WITH CURRENT SOFTWARE.**

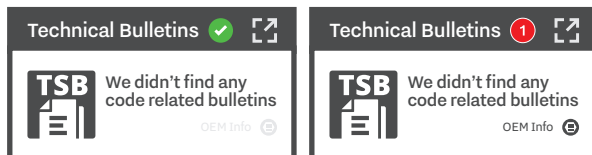
Snap-on® diagnostic tools are known the world over for great performance, rock-solid construction and intuitive design, but what makes them the best in the industry is what we put into them, both when they're built and over the life of every tool.

Ensuring your software is up to date means that all of your tools features are always ready for the next job that comes into the shop.



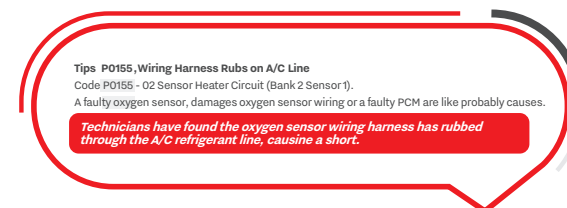
## SURETRACK TOP REPAIRS GRAPH

Provides a graph by mileage of the parts and procedures used to fix the selected code or symptom, letting you see what has worked for others in that specific situation.



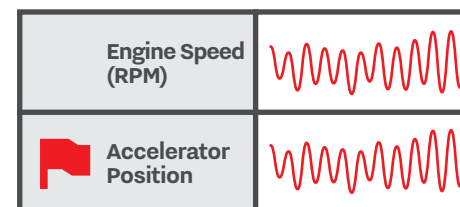
## TECHNICAL BULLETINS

Gives you up-to-date, one-click access to relevant vehicle and code-specific OEM recalls, campaigns and bulletins.



## REAL FIXES

Shows you what's worked for other technicians, based on expert knowledge from professionals who have seen — and solved — the same vehicle issues you're facing.



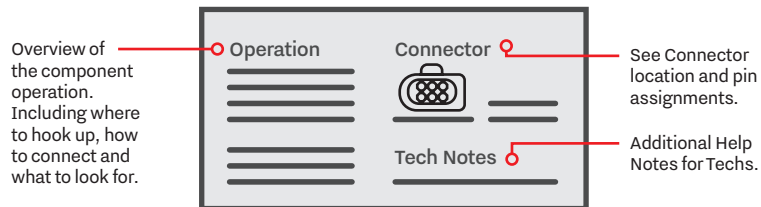
## SMART DATA

Delivers a code-based data list, highlighting PIDs that are out of expected range — with all the data recorded, all of the time.



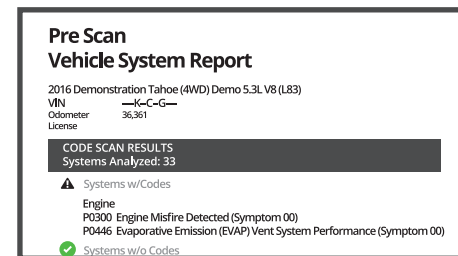
## FUNCTIONAL TESTS AND RESETS

Supplies a pre-filtered list of functional tests and resets, letting you quickly test, verify and reset component operation.



## GUIDED COMPONENT TESTS<sup>1</sup>

Vehicle-specific procedures for millions of components to verify the fix. See step by step where to hook up, how to hook up, known good waveforms and more.



## COMPLETE CODE SCAN

Pre- and post-scan functions quickly identify all codes for every system. Reports are automatically saved to the Snap-on cloud and can be easily shared with customers.

### OILS SPECS AND RESETS

#### Fluid Capacities

Fluid Type	Application	Standard	Metric	Fluid Spec	S/H
Engine oil	2.5L Eng.Eng CD 2AR-FE - Drain and Refill,w/Filter	4.60 QTS.	4,35 L	TOYOTA Genuine Motor Oil, SAE 0W-20 or equivalent ILSAC multigrade oil.	Standard

Note:  
SAE 0W-20 is the best choice of good fuel economy and good starting in cold weather. If SAE 0W-20 is not available, SAE 5W-20 oil may be used. However, it must be replaced with SAE 0W-20 at the next oil change. The engine oil capacity is a reference quantity to be used when changing the engine oil. Warm up and turn off the engine, wait more than 5 minutes, and check the oil level on the dipstick.

## OIL SPECS AND RESETS

Quick access to detailed fluid specifications, capacities, important notes, and service interval resets.



## SNAP-ON CLOUD

Vehicle system reports and image captures are automatically saved to the Snap-on Cloud so you can access and share them from your phone or computer whenever needed.

### TIRE AND WHEEL SERVICE

Tire Fitment

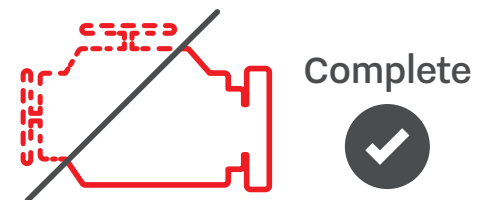
Drive Type:FWD Body Style:4D Sedan

Vehicle Option: GVWR (lbs): Not Applicable

Front Rear Both	Size Description	Standard Optional	Inflation (psi) Front-Rear	Torque (ft-lbs)	Wheel Base (in) Min-Max	Rim Size	Bolt (#-mm)
B	P215/55R17 93V	S	35-35	76		7J	5-114.3mm

## TIRE AND WHEEL FITMENT

Comprehensive instructions for TPMS reset and replacement, tire fitment and torque specs.



## SERVICE RESETS AND RELEARNS

Snap-on organizes tests and relearns by common repair procedure across all makes. Plus, a related repairs graph highlights other fixes that should be considered. OEM technical bulletins are also provided.





# **ADAS & EV COVERAGE — INCLUDED. ALWAYS.**

At Snap-on, we know how critical it is to have the right coverage at the right time. That's why ADAS and EV coverage comes standard with Snap-on software — at no additional charge.

Modern vehicles are more advanced than ever. From radar sensors to EV powertrains, there are few jobs left that don't require recalibration. Snap-on ensures your tool is equipped with the latest ADAS and EV capabilities, without surprise fees or upgrade costs. All you need to do is be on the most current software.

**NO HIDDEN FEES. JUST EVERYTHING YOU NEED, INCLUDED.**





# SECURE GATEWAY ACCESS.

Car manufacturers are actively protecting their vehicles from unauthorized access and cyber threats, by securing vital systems behind gateways.

We have partnered with manufacturers to bring you access to OEM secured modules through Snap-on® Security Link™.

Snap-on® Security Link™ streamlines the process between you, the scan tool, and the manufacturer, allowing you to perform OEM secured functions with ease. Keeping your software current ensures continued access to these secured vehicles.

## SEAMLESS INTEGRATION.

**OUR TOOLS CONNECT WITH THESE MANUFACTURERS' SECURE GATEWAY VEHICLES - AT NO ADDITIONAL COST!**

<sup>1</sup>Chrysler,® <sup>1</sup>Dodge,® <sup>1</sup>Jeep,® <sup>1</sup>RAM,® Volkswagen,® Audi,®

<sup>1</sup>Mercedes-Benz,® <sup>1</sup>Nissan,® Volvo,® Ford,® Hyundai,® Kia.®



# TRAINING & SUPPORT.

When you choose the certainty and intelligence of a Snap-on diagnostic platform and software, you get the smartest and most responsive customer support in the industry to go right along with it.

**ON OUR WEBSITE AND ON YOUTUBE™ channels** we offer a wealth of diagnostic topical and product training online to help you advance your skill and get the most out of your tool.

Our Experienced Customer Care Representatives are available at [diagnostics\\_support@snapon.com](mailto:diagnostics_support@snapon.com), and during normal business hours, our Customer Care Hotline at 800-424-7226

