

DIAGNOSTIC FOCUS

The Difference Between Re-Learn & Re-Flash

TWO VERY DIFFERENT TASKS

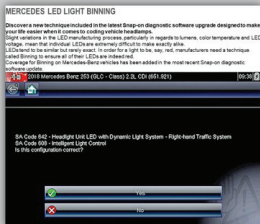
Some companies lead your customer to believe Re-Learn and Re-Flash are the same and their tool can accomplish both of them. To Re-Flash a vehicle computer requires a J2534 adapter, a Windows computer, an Internet connection, access to the manufacturer's website, a license to download the manufacturers files, and a regulated battery supply - at minimum!

RE-LEARN

When a part is replaced, it may be necessary to tell the computer that a new part has been installed so it may adapt to this new part.

Problem: When replacing an LED headlamp on a Mercedes Benz the color may not be correct.

Solution: With your Snap-on® scan tool, you can adjust the color of the LED to correct this condition.



RE-FLASH

At times it may be required to replace the operating system of the vehicle's computer. To Re-Flash a vehicle computer it requires a J2534 adapter to link to the vehicle computer, a windows computer, an Internet connection with access to the manufacturer's website, a license to download the manufacturers files and a regulated battery supply at minimum - this is the same for all scan tool manufacturers. Some competitors will allow the use of their vehicle connection interface to act as a J2534 link; while this is in use the scan tool cannot be used.

FIND OUT MORE!



EETA314A



EETA113D



**Scan to find out more
about the Pass Thru
options for Snap-on®**