



DIAGNOSTIC FOCUS

20-POINT INSPECTIONS & THERMAL IMAGING

Adding thermal inspection to your diagnostic process can do more for you than simply uncover the root of existing issues. It can also help reveal hidden problems, leading to preventative maintenance work once you've completed the job at hand.

Having the ability to visually see upcoming failures through thermal imaging is a fairly new technique. In the past, chasing invisible noise has proven to be a costly process and can create comebacks. Now with thermal imaging, you can see heat which gives visibility to noise and premature failures. But where does this come in during a workflow? What happens when the issue a customer comes in with isn't a drivability issue or engine light? That's where a thermal imager and the 20-point inspection comes in.

INSPECT Use the 20-Point Inspection sheet to do bumper-to-bumper inspection using a Thermal Imager.

PRE-SCAN Use a scan tool to check all systems for codes.

DIAGNOSIS Determine the cause and diagnose the codes pulled. Use a Thermal Imager for confirmation.

REPAIR & RECALIBRATE Fix the problem(s) and reset the system.

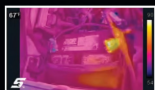
POST-SCAN Use a scan tool to verify the repair and operation.



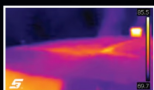


BOOST YOUR PRODUCTIVITY WITH THE DIAGNOSTIC THERMAL IMAGER+™

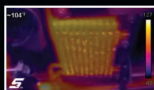
Using infrared technology to reveal heat caused by friction, electrical resistance, pressure changes and more, the Diagnostic Thermal Imager+ lets you detect problems all around the vehicle — from brakes to heated seats, misfires, HVAC, worn bearings, belts, emission controls and beyond.



**SEE THE HEAT
ON A BATTERY
GONE BAD**



**SEE THE HEAT
FOR A BETTER
LOOK AT LEAKS**



**SEE THE HEAT
ON A TROUBLING
TRANSMISSION**

NEED MORE?



Check out our Thermal Inspection Page and download the 20-point inspection sheet

Check out this
Training session on
Thermal Imaging



**Reveal The Unseen:
Thermal Imaging**

Episode 68

TRAINING WITH
 Jason **GABRENAS**

