

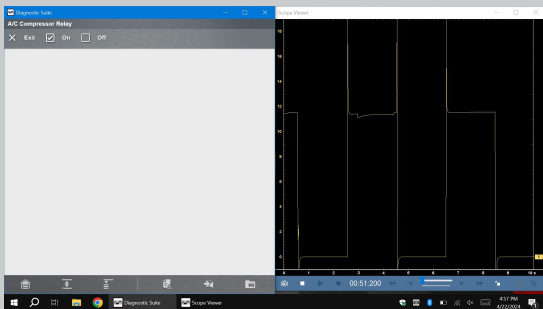
DIAGNOSTIC FOCUS

MULTITASKING WITH ZEUS™ SERIES PLATFORMS

Using a Windows® based tool such as the ZEUS™ or VERUS™ series platforms, brings some additional benefits that allow you to multitask.

SPLIT SCREEN VIEW

Carry out a functional test and view the scope data all at the same time. This can be helpful when carrying out a functional test where you want to be able to see the functional test results AND the scope results all side by side. For example, when doing a Duty Cycle test.

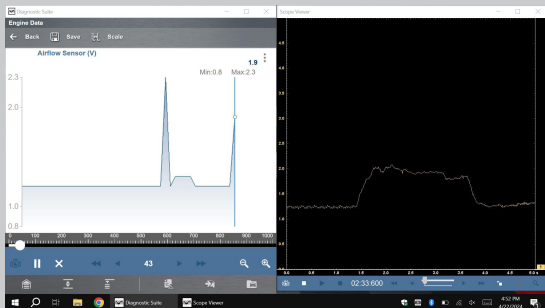


Check out this
Diagnostic Quick Tip
to find out how:



DUAL SCREEN DIAGNOSTICS

It's best practice to check both sides of the computer when completing your diagnosis, looking at both the input side and the scanner side. Being able to view both scanner and scope data on screen at once is a great help and can speed up your diagnosis.

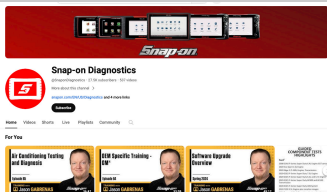


Check out this
Diagnostic Quick Tip
to find out how:



LOOKING FOR MORE?

Weekly Live Training • Diagnostic Quick Tips • Service Resets and Relearns



The @SnaponDiagnostics YouTube Channel adds new content weekly, with each episode crafted to provide a smart approach to diagnostics and a comprehensive solution to navigate through complete vehicle repairs.

Snap-on is a trademark of Snap-on Incorporated. ©Snap-on Incorporated 2024. All Rights Reserved. Printed in USA.
Snap-on, 2801 80th Street, Kenosha, WI 53143

DIAGPC0624