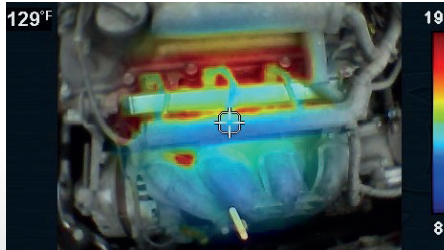


NEW freeze function allows you to take 5 different points per image



NEW thermal blending allows for easy identification and location of component being viewed

**LIST  
PRICE**

**CUSTOMER  
PRICE**

## DIAGNOSTIC THERMAL IMAGER+

Shows extreme temperatures from -4 °F (-20 °C) to 840 °F (450 °C)

Detect problems all around the vehicle: brakes, heated seats, misfires, HVAC, worn bearings, belts, emission controls, and many more

Freeze function - cursors move the crosshair which enables you to take multiple still images with temperature readings from 5 different points per image

Thermal to standard image blending allows for easy identification and location of component or area being viewed

Exclusive database of guided tests shows dozens of valuable automotive applications

Large 4.3" IPS color screen so you don't miss a clue; 120 x 90 resolution

Features image blending, split screen view, picture-in-picture view, record a video (20 seconds)

Choose between thermal, sepia and plasma color palettes for flexible viewing options

**Snap-on®**