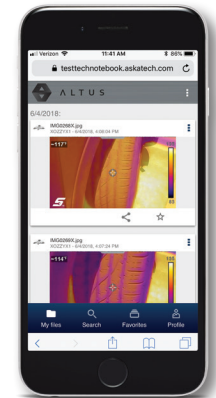


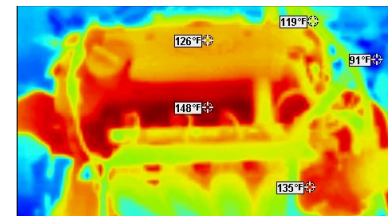
# DIAGNOSTIC THERMAL IMAGER+

## SEE THE FIX DIFFERENTLY

- Point at any area of the vehicle to see detailed images of an object's heat signature
- Shows extreme temperatures from -4 °F (-20 °C) to 840 °F (450 °C)
- Detect problems all around the vehicle: brakes, heated seats, misfires, HVAC, worn bearings, belts, emission controls, and many more
- Exclusive database of guided tests shows dozens of valuable automotive applications
- Reference images showing normal components and failed components, so you know exactly what to look for
- Large 4.3" IPS color screen so you don't miss a clue; 120 x 90 resolution
- Features image blending, split screen view, picture-in-picture view, record a video (20 seconds)
- Choose between thermal, sepia and plasma color palettes for flexible viewing options



Automatically upload images to the Snap-on® cloud @altusdrive.com. Print, store and e-mail the images directly from your mobile device or PC.



**NEW** freeze function allows you to take 5 different points per image



Cursors move the crosshairs to take multiple still images



**NEW** thermal blending allows for easy identification and location of component being viewed

