

DIAGNOSTIC THERMAL LASER

GET THE
BIG PICTURE.

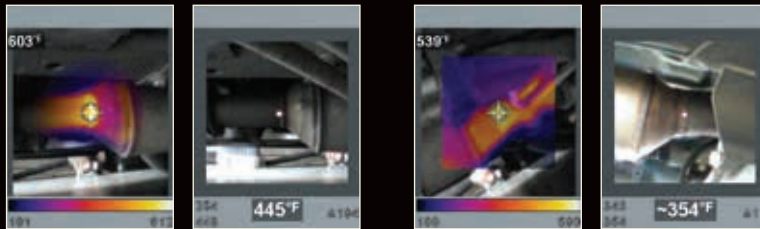
Snap-on®



DIAGNOSTIC **THERMAL LASER**

PINPOINT PRECISION TO HELP **IMPROVE** **YOUR WORKFLOW.**

Featuring both laser and thermal components, the Diagnostic Thermal Laser combines pinpoint temperature readings of up to 1,800°F (1,000°F in thermal mode) and thermal imaging capabilities for unrivaled performance on a greater variety of applications — all with just one tool.



Front

Back

A two-in-one tool with thermal and laser modes, ideal for jobs such as checking inlet and outlet temperatures of catalytic converters



2.8" colored display

Ergonomic pistol grip



Control trigger for
capturing pictures
and storing hundreds
of images

- A Thermal Laser measures temperature up to 1,800°F and enables “delta” readings when capturing lowest to highest temperature readings
- B Thermal Imager supports thermal blending, letting you see images in context
- C Visible light camera with storage for hundreds of images
- D Built in LED light

POINT. SHOOT. MEASURE. FIX. REPEAT.

Laser-guided temperature readings. Thermal imaging capabilities. Storage for hundreds of images. To discover everything the new Diagnostic Thermal Laser can do to take your troubleshooting to a new level, talk to your Snap-on® Franchisee or other sales representative — or visit snapon.com/thermallaser — today.

SPECIFICATIONS

- Laser and thermal components
- 1,024 temperature readings
- 32x32 thermal sensor resolution
- Storage for hundreds of images
- Thermal Image Blending, plus a visible-light camera to provide more detail
- Maximum temperature readings:
 - Laser mode: 1,800°F
 - Thermal mode: 1,000°F
- Delta reading in laser mode captures highs, lows and delta
- Trigger captures pictures and stores hundreds of images
- Trigger capture for images and temperature readings alike
- Ergonomic pistol-grip design for easy, precise control



When you choose a Snap-on diagnostic tool, you gain a long-term partner. Experienced Snap-on Customer Care Representatives are available to support you on our Customer Care Hotline at 800-424-7226.

[snapon.com/thermallaser](https://www.snapon.com/thermallaser)