



EXPANDED
COVERAGE

EXPERT
TIPS

GUIDED
ANALYSIS

EMPOWER ON

Empower yourself. Power up. Power on.

GENERAL
REPAIR

COLLISION
REPAIR

18.2



snaapon.com/diagnostics

SOFTWARE UPGRADE 18.2 HIGHLIGHTS

NEW

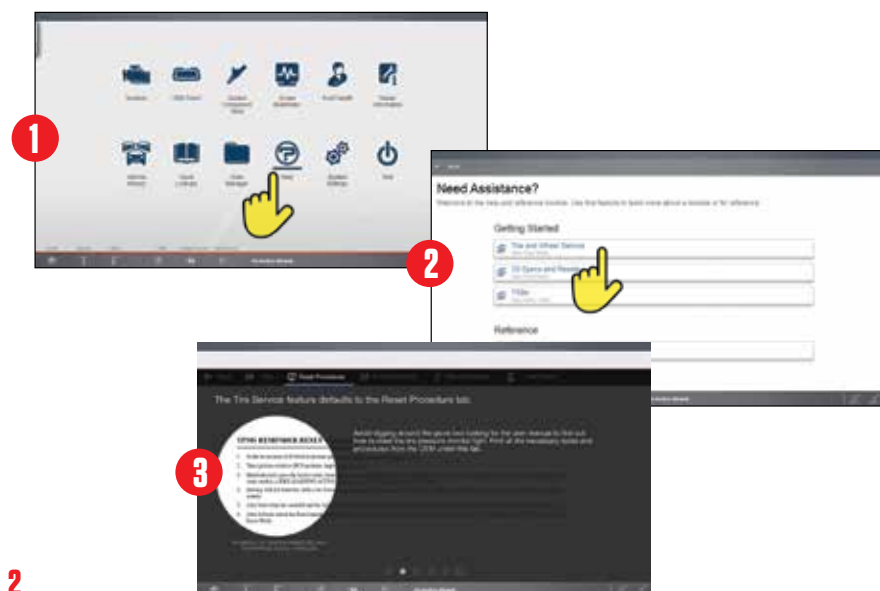
More than 400,000 codes, data, test and tips added for technicians to handle more systems like Diesel, TPMS, Electric Steering and Hybrid Power Systems with the most comprehensive OEM-specific coverage for 100 vehicle systems and 49 manufacturers.

40% of this new software upgrade covers contemporary OEM safety and advanced driver's assistance systems to help body shops, used car dealerships, repair shops and mobile diagnostic businesses to take on new opportunities as well as handle collision-related insurance requirements:

- Intelligent Cruise Control
- Airbag
- Collision Mitigation Sensor Systems
- Electronic Parking Brake
- Head Up Display
- Lane Departure Warning
- Occupant Classification
- Parking Assist Systems
- Pedestrian Impact Detection
- Radar Sensor
- Surround View Monitor
- And More

Get The Information You Need Right On The Tool

- **New topic-specific Help for ZEUST™, VERUS® and VERDICT®**
 - The new HELP button takes users to a dedicated topics page. Topics selected have step-by-step instructions using guided overlays to make getting help easy.



- **Quick Lookups for Edge Series and ZEUS™**

- **Tire and Wheel Service** – Informational reset procedures, Scanner reset procedures, Tire Fitment and Repair procedures.

At-the-fender access during tire installation to find the torque and inflation specifications offers safety benefits above just accelerated procedure speed. Properly torqued wheels and inflated tires ensure customer safety and satisfaction.

- **Oil Change and Service Resets** now included on ALL Edge series platforms in addition to ZEUS. Saves a walk to the PC to find out how much oil a vehicle takes. Eliminates leaving the bay to perform an oil change reset. All this is a game changer—it quickens an oil change, gets the job done faster and drives more profit because more jobs can be completed in a day.



SOFTWARE UPGRADE 18.2 HIGHLIGHTS

ENHANCED

Exclusive access to SureTrack®, providing Real Fixes and verified parts replacement records from millions of successful repair orders**

Powerful bi-directional control, plus scripted functional tests to automatically run through multi-step tests in no time

Direct access from Home screen to Component Test Meter (CTM) Training including Power User Tests, How To's and more

ALWAYS

High-performance software that starts up in less than 5 seconds, providing results in as little as 30 seconds**

Auto-ID means vehicles will identify themselves to the scan tool automatically, saving time and eliminating entry errors

One-Touch Code Scan for a quick and complete health check of all available systems, plus clear codes with one touch, saving time and preventing comebacks

Exclusive Fast-Track® Guided Component Tests** show how to test, where to connect and what results to look for

Continuous software options to access the most comprehensive software available for Asian, European and domestic

Comprehensive support programs, including a Customer Care hotline, extended warranty and online Training Solutions®

For a complete rundown of available features and coverage see the Vehicle Coverage Guide at diagnostics.snapon.com/18.2

** Eligible platforms only.

PLATFORM FEATURES AT-A-GLANCE

Platform Features	ZEUST™	MODIS Edge™	SOLUS Edge™	ETHOS Edge®
Tire and Wheel Service (Quick Lookups)	X	X	X	X
Oil Change Specs and Service Resets Quick Lookups	X	X	X	X
Intelligent Diagnostics	X			
SureTrack	X	X	X	
Instant ID (most 2005 and newer)	X	X	X	
Vehicle System Report	X	X		
Exclusive TSBs, Campaigns and Recalls	X			

New in Upgrade 18.2

INTELLIGENT DIAGNOSTICS SOFTWARE

Comprehensive enough to provide all the diagnostic and repair tips you need, smart enough to skip the ones you don't!

All the functions and repair tips you need to diagnose, repair and manage any issue. But unlike any software before, it practically anticipates your next move by guiding you through every step needed to find the solution, while avoiding the steps you don't. It displays only the information that's relevant to the specific vehicle and fault code. From Technical Service Bulletins and scanner Smart Data to SureTrack® Expert Information, Intelligent Diagnostics is the most sophisticated and intuitive software we've ever created. Accessing all the Intelligent Diagnostics functions requires an applicable software agreement, which more than pays for itself through its depth of information and time savings.

Intelligent Diagnostics is limited to eligible tools. See your participating Franchisee or other sales representative for pricing and availability.

SureTrack® – The Fastest Path to Fixed

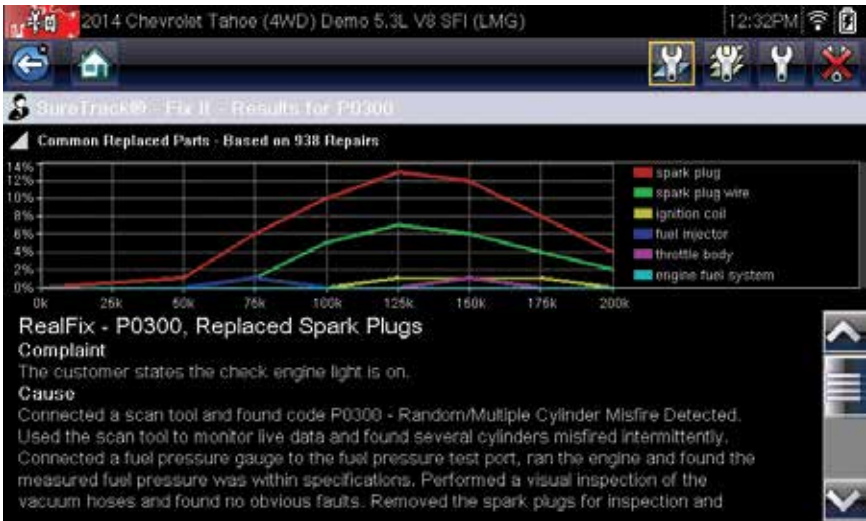
Available in Snap-on diagnostic tools and online, SureTrack delivers expert information with the latest Snap-on Software Upgrade. Get Real Fixes and verified parts replacement records harvested from millions of actual repair orders.

New content is continually added and with the latest software you instantly access:

- Verified parts replacement records showing successful fixes
- Expert information hot-linked directly from diagnostic trouble codes
- Exclusive insight based on experience from millions of repair orders
- Vehicle-specific fixes based on symptoms, codes and mileage
- Definitive, reliable answers, validated by SureTrack expert technicians

ACCESS	ZEUS™	MODIS Edge™	MODIS Ultra™	SOLUS Edge™	SOLUS Ultra®
On-tool	X	X	X	X	
Online Web	X	X	X	X	X

NOTE: Online access requires authorization code, which is included on the customer’s software purchase receipt.



CONTINUOUS SOFTWARE OPTIONS

Avoid Gaps in Coverage and Get All New Features

Live 3-Year Data Plan†

Three years of Intelligent Diagnostics software with complete data services, all available domestic, Asian and European upgrades, SureTrack, three-year warranty and online upgrades for eligible platforms.

1-Year Coverage Upgrade Program†

Twelve months of all available coverage for domestic, Asian and European vehicles, including Intelligent Diagnostics with complete Data Services for eligible platforms, plus SureTrack and online software upgrades.

6-Month Coverage Upgrade

Six months of all available coverage for domestic, Asian and European vehicles, plus SureTrack.

See your participating Franchisee or other sales representative for pricing and availability.

† See back cover

EXTENDED WARRANTY PROTECTION

Snap-on offers peace of mind and protection for some of your most valued business assets – your Snap-on diagnostic tools. Snap-on is proud to offer this comprehensive and flexible extended warranty coverage for ZEUS™ and the VERUS®, MODIS™, SOLUS™, ETHOS® and VANTAGE® families of products for an additional 12, 24 or 36 months¹¹ — it's your choice.



Here are some key reasons why the Extended Warranty Program is right for your customer:

- Coverage equal to the original factory warranty
- Continuous protection for pennies a day
- Flexible financing available
- Protection against future parts and labor cost increases
- Increased resale value
- Can pay for itself in cost savings with just one repair
- Provides years of worry-free use
- 12, 24 or 36 month extended coverage¹¹
- Genuine Snap-on service parts and expert service technicians
- Complimentary shipping and handling

The Snap-on Extended Warranty Program is the most comprehensive extended warranty in the business that offers the same complete coverage as the original warranty. Whether you choose 12, 24 or the 36 month extension, its universal protection remains the same!

¹¹ Extended Warranty Program available with new diagnostic tool purchases as well as any diagnostic tool while under its original Snap-on warranty.

OPTIONAL HARLEY-DAVIDSON®

Vehicle Software Coverage and Smart Vehicle Interface

Get diagnostics coverage for Harley-Davidson motorcycles compatible with Snap-on® diagnostic platforms with Upgrade 18.2. Platforms include ZEUS™ and VERUS®, VERDICT®, MODIST™, SOLUS™ and ETHOS® family platforms with current software.



Receive comprehensive coverage for all major systems on 2000 and newer motorcycles, including: Engine, ABS, Hands-free, Security, Turn Signal, Hand Control Module, Body Controls, Instrument, Speedometer, Tachometer.

The Smart Vehicle Interface includes both Harley-Davidson adapters in one, and provides secure activation for scan tool software. A handy support hook helps keep the Smart Interface safe from hot pipes and moving parts.

Read and clear OEM-specific fault codes. Perform One-Touch Code Scan for all available systems. Display live data in digital and graphing views. Perform powerful functional tests.

Control vehicle systems and verify component operation with a wide range of functional tests and more, such as obtaining the mileage at which a code was set with new Engine Extended DTC Data Coverage. And that's not all, get... Radio Configuration, Throttle Position Test, Cruise Control Diagnostics, Idle Speed Adjust, Bleed Brakes, ABS Actuation, Fuel Pump, Turn Signals, Horn, Reset PIN, Reprogram Key Fobs, Alarm, Side Car Configuration, Dash Lights and LCD Segments, Speedometer and Tachometer.

EMPOWER ON

UPGRADE 18.2

Empower yourself. Power up. Power on.

To learn more about features and coverage, see your participating Franchisee or other sales representative, or visit diagnostics.snapon.com/18.2

†1-Year Coverage Upgrade Program

Enrollment fee is separate and not eligible for weekly or monthly payment option. Rates and terms are subject to credit approval at time of sale and terms of the program and contract. Not everyone will be approved. Payment based on 12 month term for Subscription. Not all software products qualify.

†Live 3-Year Data Plan

Data package is separate and may be included on EC. Rates and terms are subject to credit approval at time of sale and terms of the program and contract. Not everyone will be approved. Payment based on contract term. Not all platform products qualify.

Diagnostic Customer Care Center

Three ways to get support:

WEB diagnostics.snapon.com/faq

EMAIL diagnostics_support@snapon.com

PHONE (800) 424-7226



Snap-on is a trademark, registered in the United States and other countries, of Snap-on Incorporated. This publication contains many Snap-on Incorporated trademarks, including but not limited to SURETRACK® and FAST-TRACK®. All other marks are trademarks or registered trademarks of their respective holders. ©2018 Snap-on Incorporated. All pictures and illustrations shown are for reference purposes only. All information including specifications herein are subject to change without notice. EAZ0042L55A Rev. A US

snapon.com/diagnostics

Snap-on®