



TOTAL SHOP SOLUTIONS

Snap-on®

PRODUCT CATALOGUE

diagnostics.snapon.co.uk

Snap-on®

SUN

HOFMANN® 

JohnBean



TOTAL SHOP SOLUTIONS

Snap-on®

Total Shop Solutions from Snap-on brings the premium SUN, Hofmann and John Bean brands together to demonstrate how the innovative products can improve your garage's performance and, more importantly, your bottom line.

The range of garage equipment from Snap-on is created to offer a complete solution to repair businesses, from those looking to upgrade and develop to those looking to take their first steps in the automotive industry.

Read on to find out about how the wheel aligners, tyre changers, wheel balancers, air conditioning machines, automotive lifts and MOT equipment can help your business grow.



QUALITY AND SERVICE YOU EXPECT



UNCOMPROMISING QUALITY SINCE 1931



EXCELLENCE IN WHEEL ALIGNMENT



SUN	3	HOFMANN	33	JOHN BEAN	57
MOT	4	MOT	34	WHEEL ALIGNMENT	58
LIFTS	9	LIFTS	39		
AC	20	WHEEL SERVICE	51		
WHEEL SERVICE	24				
EZ-ADAS™	31				
COMMERCIAL DIAGNOSTICS	32				

WE'RE READY TO SOLVE YOUR QUERIES



Our UK call centre team have **decades of experience within the automotive industry** and are equipped to troubleshoot your queries quickly.

NATIONWIDE SERVICE COVERAGE

Our Snap-on service division are on the road ready to keep your business operating. Our employed **network of 40 UKAS and GEA accredited engineers** plus an in house installation team are on hand to provide calibration and routine maintenance to keep your investment in the best working condition.





QUALITY AND SERVICE YOU EXPECT

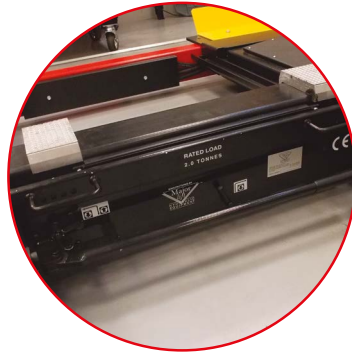


DVSA APPROVED MOT EQUIPMENT

DETAILED OVERVIEW



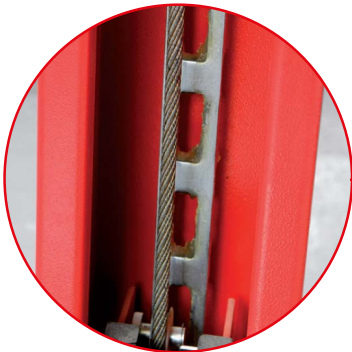
Our play detectors are more likely to find fault than any other on the market as it accentuates any wear in steering



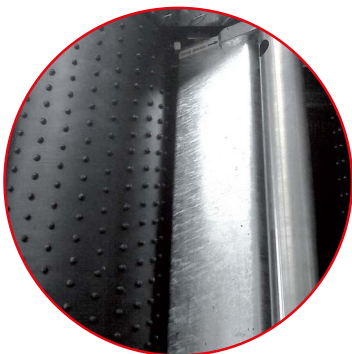
Integral jacking beam has one of the highest lifting capacities on the market at 500 mm



Heavy duty recessed bearing radius plates - minimum maintenance



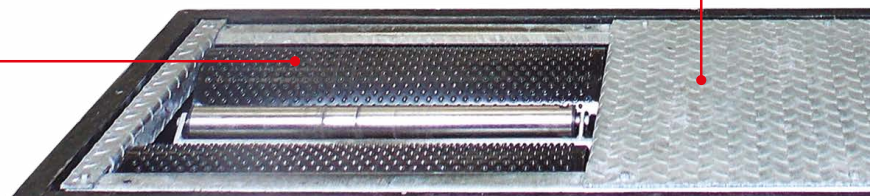
Safety ladder locks on all posts

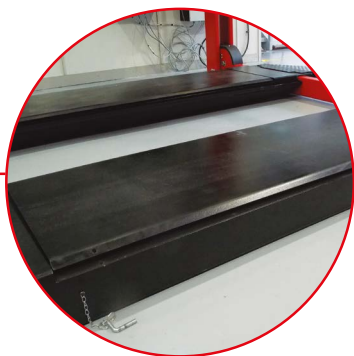


Unique dimple design with 10-year roller surface warranty; locked roller for easy exiting

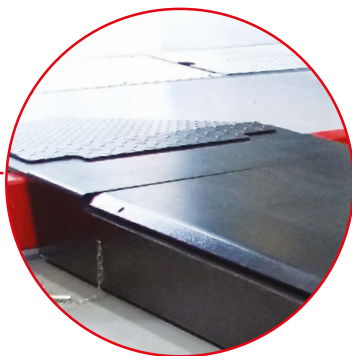


Fully galvanised chassis





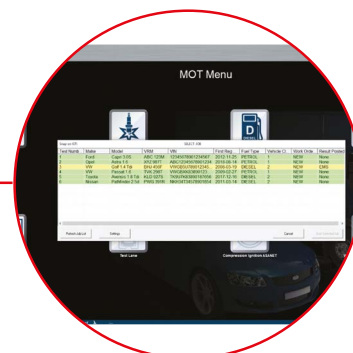
Integrated rear slip plates allowing for dual usage when carrying out wheel alignment



High quality finish platform



Convex inspection mirrors



"Connected" approved. Unique Snap-on IOT manager software allows you securely communicate with the DVSA MOT Testing System (MTS)



Integral wireless inspection lamp incorporating buttons for play detector operation

CONNECTED AUTOMATED TEST LANE



SUN's ATL is a DVSA-approved automated test lane system for one person operated MOT testing for class IV and VII with the optional class I, II, III and class VL ability.

At the heart of the SUN ATL is the DGA6000 LINK, with a large 27" monitor providing clear visible information in your workshop.

Using Windows-based, icon-driven software, the SUN ATL requires minimum training for the test to be completed. Test procedures can be performed in fully automatic mode or manually.

The new connected DGA6000 LINK has been engineered from start to finish to make your MoT testing process fast and reliable. Every aspect of the DGA6000 LINK is designed to enhance your MoT bay and make the job easier and quicker.

Plus the new health check feature looks beyond your MoT bay to see where you could make additional revenue from vehicle faults.

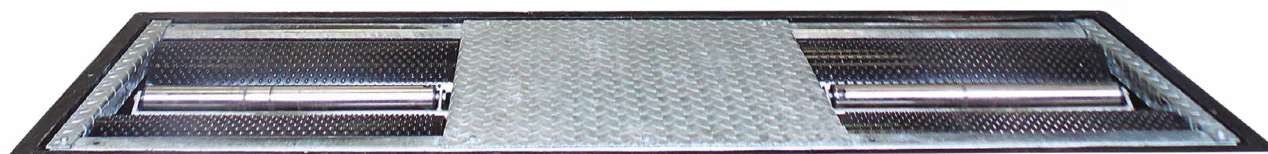
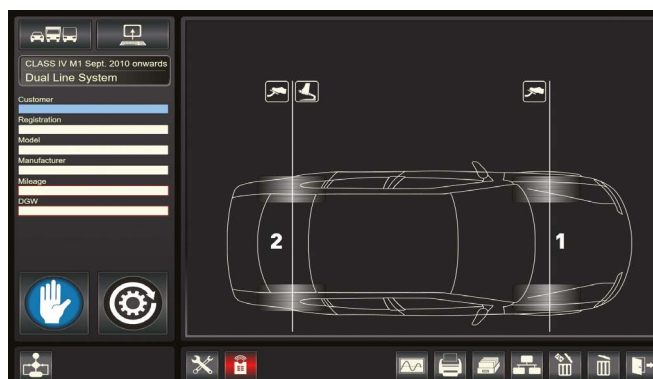
The brake rollers have a fully galvanised steel chassis for maximum protection against corrosion, and have been designed for installation into a dedicated recess.

The 4 post lift comes with rear slip plates and turnplates built in as standard, along with a long 5.2 m or 5.7 m platform length. This high quality lift goes through a rigorous inspection before it is even despatched to you for installation by our expert installation team.

FEATURES

- | DGA6000 LINK Connected Emissions analyser
- | Class IV or VII lift with integral play detector
- | Bearing radius plates
- | Jacking beam 2000 kg or 2800 kg
- | Class IV or VII roller brake tester, with easy-to-use PC software
- | Brake roller cover plates
- | Rail mounted headlight beam setter
- | Can easily be upgraded to cover Class I and II tests
- | Four-post lift has integrated slip plates make the most of your investment by including a wheel alignment package
- | Heavy duty recessed bearing radius plates minimum maintenance
- | Unique dimple design for brake tester with a 10 year surface warranty
- | Hydraulic play detectors are more likely to find faults than any other on the market as they accentuate any wear in steering components
- | Integral wireless inspection lamp incorporating buttons for play detector operation
- | Elephant trunking as standard to help keep pipes and hoses tidy
- | Safety ladder locks on all posts
- | ATL scissor lift with integral play detector option is also available
- | Connected decelerometer available

CONNECTED ROLLER BRAKE TESTERS



Take the brakes off brake testing with the SUN system. The range includes MOT Class IV and Class VII brake testers, ATL brake testers (Automated Test Lanes), motorcycle brake testers and comes with an exclusive 10-year roller

brake surface warranty. The SUN roller brake testers have been developed to meet the latest DVSA regulations for connected MOT testing with quick and accurate results.

FEATURES

- | The Roller brake tester is approved for DVSA "connected" requirements: Connected MoT equipment is able to talk directly to the DVSA's MTS system with a single button press and reduce or eliminate any data entry errors.
- | Built to last: The chassis is built from fully galvanised steel for long life and include roller covers as standard
- | Designed for ease of use: The graphical user interface is designed for ease of use and simulates the well-known meter displays from the older analogue units while including all the benefits of modern technology and the latest ATL test procedure and manual brake testing functions
- | SUN Brake Testers are supplied with a 27" monitor, printer and database for saving test results as standard.
- | The roller brake surface includes a 10-year warranty, giving you long-term peace of mind.
- | Two chassis options giving you the highest Class IV & VII specifications in the industry
- | 700 mm rollers have a drive over capacity of up to 4000 kg (800 Kgf brake force) and can be used for MOT class I, II, III, and IV
- | 1000mm rollers have a drive over capacity up to 6000 kg (1250 Kgf brake force) and can be used for MoT class I, II, III, IV, VI and VII (class I and II require optional adaptor plate)

- | Unique roller surface: The dimpled roller surface is designed to offer protection to tyres while giving a coefficient similar to the road surface, allowing for accurate and repeatable results wet or dry.
- | Weighing by wheel: The weighing system allows weighing by wheel (standard on ATL, optional on non-ATL).
- | Wireless connectivity: With the wireless connectivity option between the roller chassis control box and the PC you have the flexibility to place your PC/display in the most convenient place in the workshop for testing (within the required range).

STANDARD ACCESSORIES

- | 15 m cable as standard (optional 25 m cable available)
- | Radio remote control

DGA6000 LINK CONNECTED EMISSIONS ANALYSER

The DGA6000 LINK has been designed to seamlessly integrate the DVSA's MoT Testing System (MTS), the emissions tester, the SUN brake tester and decelerometer, providing you with a simple and unique design that links all your MoT testing equipment together. Saving you and your team time in training, set-up and your ongoing work processes.

With the DGA6000 LINK you can do more for your customers by identifying customer vehicle faults before they become a problem, including emissions related pending codes. This is done simultaneously whilst you are doing the test, with no additional user input required. Use this feature to generate additional revenue by identifying and recommending repairs to your customers.



FEATURES

- | The EOBD dongle makes oil temp and RPM measurement a breeze
- | Intuitive software, simple menu items
- | Familiar feel for anyone that's previously used a SUN emissions machine
- | Extra large 27" widescreen display
- | Large graphics can be easily seen from a long distance
- | Battery-powered SGMIII Gas Module, no long metre hose to unroll and coil up before and after every test
- | Use as your DVSA MTS (MoT Testing System) device - in the workshop, where you need it, when you need it
- | Zero emissions vehicles are tested quickly with Zero reading by monitoring RPM increase
- | Market leading technology! We've been providing MoT emissions testing equipment for over 30 years
- | Built by Snap-on in the United Kingdom, using only high-quality components
- | Our unique and superior water handling function means the gas module won't be flooded or experience any issues due to water ingress
- | A Solid State hard drive means no moving parts in the PC for speed and reliability
- | Quality branded PC equipment
- | Wireless laser printer that can be moved to where it is most convenient for you
- | Robust wireless Petrol and Diesel modules - designed for the workshop environment, no cables to drag across
- | The gas and diesel smoke meter remains heated so it is always ready to measure - no need to wait for it to warm up
- | Fully upgradeable system that allows you to add a SUN roller brake tester and 3D wheel alignment
- | OBD health-check function takes no extra time to earn extra revenue
- | Integrated connected decelerometer software making data transfer much easier
- | Quicklinks function allows you to access your most used websites at the touch of a button
- | 2 years warranty covering all aspects of the equipment inc. PC, keyboard, mouse and monitor
- | Auto error-reporting back to the service centre
- | A team of GEA accredited Snap-on Service Engineers situated throughout the country: so qualified help is never far away
- | Your service teams visit for calibrations and maintenance are scheduled by our expert UK customer care team - plus get live updates on service engineer arrival times
- | Integrated Snap-on consumables web link: order spares right there on your emissions analyser
- | Software and DVSA updates downloaded via the Internet saving you time and hassle
- | Remote product support available to help rapid fix where possible
- | On-site service engineers are equipped with large spares inventory, for faster first time fix

ONE PERSON TEST LANE SCISSOR



The SSL 6350 car scissor lift allows for one-person testing and can be fitted into existing bay recesses – making it a perfect solution for current MoT stations wanting to bring their equipment right up to date while minimising disruption to their businesses.

It has a 3500 kg lifting capacity and meets requirements for Class IV testing and requires no additional groundworks (some exceptions may apply) for installation into a current MoT bay with four-post lift. The SSL 6350 is also ideal for new MoT sites with limited space.

FEATURES

- | DVSA-approved play detector with wireless control
- | Only 140 mm high when fully lowered locking ladder provides additional safety when working under vehicle
- | Six hydraulic rams for easy lifting from low height
- | Front and rear twin torsion bars for better stability when using the play detector
- | Electronic out-of-level sensing system will automatically stop the lift if it is not level

FULL-HEIGHT SCISSOR



The SUN SSL 3000 is a double scissor (full height) short sill car lift designed for surface installation.

It has a 3000 kg lifting capacity, a four hydraulic ram system for added safety and stability between platforms, and pneumatic safety locks.

FEATURES

- | Easy to handle drive-on and drive-off ramps
- | Hydraulically synchronised platforms
- | Overload safety valve
- | Safety valve incase of sudden loss of pressure
- | Automatic lowering control
- | 'Dead man' controls, 24 V
- | Set of 4 rubber pads
- | 'Buzzer' on last portion of descent

OPTIONS

- | Single phase version
- | Recess installation also available
- | Kit of embedded run-on and run-off skids
- | Additional set of lifting pads available

SSL-35 MID-RISE SCISSOR



The SSL-35 is a 3500 kg electro-hydraulic mid-rise scissor service lift, designed for use predominantly within tyre centres and small garages to lift cars and light commercial vehicles.

The small size and portability make this a great investment for any busy garage. It is ideal for general garages and multi-bay repair centres, along with independent garages and workshops.

FEATURES

- | | |
|---|--|
| Portable kit, comes with set of moving wheels to move around the workshop | Locking platform extension for lifting longer vehicles |
| Pneumatic safety locking | Single phase operation |
| 4 rubber lifting blocks | Hydraulic pressure overload protection |
| | 24 V safety system on platform |

ELECTRIC AND HYBRID VEHICLE BATTERY LIFT



The Hofmann Electric and Hybrid Battery Lift is a dedicated lifting table to assist with mounting and removing batteries from electric and hybrid vehicles. It features a dual-speed electro-hydraulic lifting system and has a total lifting capacity of 1200kg within a lifting range of 800mm to 1810mm

FEATURES

- | Two lifting modes for standard and slow lifting
- | Electrically released mechanical locking system
- | Hand-held lift controls with stop, slow rise, standard rise, and down functions
- | The suspend platform can tilt within a height of 40mm. The lower platform can move laterally within a distance of 20mm
- | Reserved holes (100mm x100mm) on the working table for positioning and fixing components with specialized fixtures
- | Can also be used to demount engine, gearbox, drive axle, fuel tank and suspension of petrol- and diesel-powered vehicles.
- | Oil hose with double steel wire fabrications, which has passed pressure test under 40MPa, can work under twice the nominal working pressure without breakage.
- | Pins and pads for positioning and fixing components
- | Lifting capacity of up to 1200kg
- | Lifting range: 800 to 1810mm

ALIGNMENT SCISSOR LIFT



The SUN SSL 6400 Alignment Scissor Lift 4T is intended primarily for use in small garages, tyre centres and wheel alignment specialists. Measuring a total length of 5m and featuring long rear slips and configurable infills, the turntable positioning can be changed to fit a variety of vehicles, from cars to light commercials.

This heavy-duty Alignment Scissor Lift has a maximum lifting capacity of 4000kg and can lift between a range of 230mm and 1900mm. Available for installation in either recess or surface-mount configurations. It features low-profile platforms engineered with high planeness to guarantee perfect wheel alignment.

FEATURES

- | Suitable for a wide range of vehicles from small cars to light commercial vehicles
- | Available in recess or surface mount configurations
- | Maximum lifting weight of 4000kg within a range of 230mm - 1900mm
- | Smaller footprint over 2 & 4 post systems
- | Four hydraulic cylinders in a cross aligned arrangement provide secure lifting power and added safety
- | Approach ramps are equipped with end rollers to minimise noise and reduce floor damage
- | Long rear slips and adjustable turntable positioning via configurable in-fills
- | Turning plates as standard
- | Uses a 24V control system for safer operation
- | Safety features:
 - Max height and safe decent limit switch
 - Anti-surge safety descent valve
 - Platform synchronisation safety
- | Pneumatic locks are part of the quad electro-hydraulic ram system for increased stability and safety between the platforms
- | Self-lubricating bushing and bearings
- | Alignment inspection and adjustment areas are illuminated by four independently programmable LED light strips, included as standard
- | Includes hose covers, rails for jacking beam

MCL 1000 MOTORCYCLE LIFT



The SUN® MCL1000 Motorcycle Scissor Lift is a heavy-duty scissor lift and workbench created specifically for use with class I and II motorcycles up to a maximum weight of 1000kg. This versatile motorcycle lift is perfect for general repair garages and workshops that specialise in motorcycles as they are likely to see a wide range of bikes come through their doors, from the smallest scooters to the largest touring and performance motorcycles.

The MCL1000 has an adjustable wheel-clamping system that makes it possible to safely fasten motorcycles to

the lift. Driving on and rolling off is made simple by a low, angled ramp. Additionally, there are front and back hinged plates that make it possible to remove for wheel maintenance and removal.

FEATURES

- | The main platform is measures 800mm by 2000mm and can lift loads within a range of 195mm to 1200mm which is ideal for a variety of wheel-off and engine repairs
- | Maximum rated load of 1000kg
- | Integrated electro-hydraulic motor can lift within a range of 195mm-1200mm
- | Adjustable wheel-clamping system, enables motorcycle to be securely fastened to the lift
- | Low angled ramp enables easy drive-on and roll-off
- | Hinged plates at front and rear for easy wheel maintenance and removal

THE MOTORCYCLE SCISSOR LIFT PACKAGE INCLUDES:

- | MCL1000 scissor lift
- | Handheld control unit
- | Integrated electro-hydraulic motor
- | Manual front wheel clamp

SVL-D50 2-POST DYNAMIC CLEAR FLOOR LIFT



The SUN® SVL-D50 is a revolutionary two-post lifting system, offering a clear floor setup with a low-post configuration, designed to provide all the functionality and practicality that independent garages require, without compromise.

Featuring two independently mounted, wirelessly synchronised 3-phase electro-hydraulic power posts, the system ensures reliable, smooth performance with consistent lifting power, ranging from 110mm to 1900mm, and a maximum rated lifting capacity of 5000kg.

By eliminating hoses and cables between the posts, traditionally routed through baseplates or a gantry, the SVL-D50 combines low-posts with clear floor space, creating the ultimate 2-post lift setup. This innovative design simplifies vehicle positioning, provides easy access to undercar components, and allows for the seamless use of battery lifts, transmission jacks, and other equipment.

Dual controls with an intuitive touchscreen interface enable operation from either side of the lift, enhancing workflow and technician efficiency.

Suitable for a range of workshop environments, from smaller spaces to larger setups, the SVL-D50 is built to handle the high demands of busy garages, making it the ideal equipment for a wide range of servicing and repair tasks.

FEATURES

- | Rated maximum lifting capacity of 5000kg
- | Dual power posts with 3-phase electro-hydraulic motors provide reliable and smooth performance for consistent lifting power
- | Clear floor design eliminates cables through a baseplate or top gantry, creating an open workspace that simplifies vehicle positioning, reduces trip hazards, and allows easy use of equipment like battery lifts and transmission jacks, enabling you to work more efficiently
- | The symmetric, adjustable arms with a reach ranging from 900mm to 1800mm, ensures balanced lifting and stability for a range of vehicles, from small cars to light commercial vehicles
- | Dual controls with intuitive control panels and touchscreen displays on both power posts, wirelessly synchronised to allow operation of the lift from either side
- | Safety features include safety ladder locks on both posts, single-button descent operation with a buzzer and light warning for the final descent, and an automatic shutdown if a synchronisation discrepancy is detected
- | Comes complete with 100mm lifting adapters, which can be conveniently stored on the outside of each column

TWO POST WITH BASEFRAME



The SUN SVL HB series of 2-posts lifts with baseframe, are suited to workshops with height restrictions.

Available in two lifting configurations; SVL43 HB (4-tonne) and SVL50 HB (5-tonne). The SVL43 HB is available in either 1 phase or 3-phase power configurations and the SVL50 HB is available in a 3-phase power configuration only. The lifting ranges of the 4-tonne and 5-tonne versions are respectively 80-1900mm and 100-1900mm, making this lift suitable for a variety of vehicles from cars to light commercials.

FEATURES

- | Pad height 80 mm: The low profile arms are designed to lift sports vehicles and low skirted vehicles (not available on 5 tonne version; pad height is 95 mm on 5 tonne version)
- | Symmetric posts: Controls can be mounted on either post due to its symmetric design
- | The SVL43 HB (4-tonne) features four lifting arms with a three-stage asymmetric configuration which gives a better centre of gravity when working on front-wheel drive vehicles
- | SVL50 HB (5-tonne) features four lifting arms with a three-stage symmetric configuration which gives a better centre of gravity when working on light commercial vehicles
- | Safety feature: Our safety cut out for carriage de-synchronisation is unique to Snap-on
- | Single button descent operation: The easy operations make your job quicker
- | Lifting adaptors: The SVL range comes complete with 100 mm high lifting adaptors for the 5 tonne version & 55 mm on the 4 tonne version

- | Low profile floor plate: Heavy duty low profile floor plate, with ultra-low 35 mm base frame makes it simple to manoeuvre 'dead' vehicles
- | Other accessories: Special vehicle adaptors available on request

OTHER ACCESSORIES

- | Special vehicle adaptors available on request

TWO POST BASELESS (CLEAR FLOOR)



The SUN SVL HBL maximises floorspace to provide excellent access for battery lifting systems used for mounting and removing from electric and hybrid vehicles as well as lifting systems for mounting and demounting engine, gearbox, drive axle, fuel tank, and suspension components on internal combustion-powered vehicles.

Available in two lifting configurations; SVL43 HBL (4-tonne) and SVL50 HBL (5-tonne). The SVL43 HBL is available in either 1 phase or 3-phase power configurations and the SVL50 HBL is available in a 3-phase power configuration only. The lifting ranges of the 4-tonne and 5-tonne versions are respectively 85-1900mm and 95-1900mm, making this lift suitable for a variety of vehicles from cars to light commercials.

FEATURES

- | Pad height 85 mm: The low profile arms are designed to lift sports vehicles and low skirted vehicles (not available on 5 tonne version; pad height is 95 mm on 5 tonne version)
- | Symmetric posts: Lift can be easily configured with the controls on either side due its symmetric design.
- | The SVL43 HBL (4-tonne) features four lifting arms with a three-stage asymmetric configuration which gives a better centre of gravity when working on front-wheel drive vehicles
- | SVL50 HBL (5-tonne) features four lifting arms with a three-stage symmetric configuration which gives a better centre of gravity when working on light commercial vehicles
- | Safety feature: Our safety cut out for carriage de-synchronisation is unique to Snap-on
- | Single button descent operation: The easy operations make your job quicker
- | Lifting adaptors: The SVL range comes complete with 100 mm high lifting adaptors for the 5 tonne version & 55 mm on the 4 tonne versions

OTHER ACCESSORIES

- | Special vehicle adaptors available on request

LIFT SPECIFICATIONS

DUAL REVENUE FOUR POST LIFT



Rated Capacity	4000 kg	5000 kg
Platform length	5200 mm	5700 mm
Platform width	630 mm	630 mm
"Overall length (recessed) inc' flip plate"	5600 mm	6100 mm
Overall length (surface mount) inc' ramp	6350 mm	6850 mm
Overall width	3310 mm	3310 mm
Minimum platform height	190 mm	190 mm
Maximum platform height	1830 mm	1830 mm
Distance between platforms	800 mm	800 mm
Slip plate length	1980 mm	2480 mm
Min foundation depth	≥200 mm	≥200 mm
Power requirements	400 V, 50 Hz, 3 ph	400 V, 50 Hz, 3 ph
Motor Power	3.0 kW	3.0 kW
SPD 2000 Play Detector		
Certified maximum weight	1300 kg per wheel	1300 kg per wheel

ONE PERSON TEST LANE SCISSOR LIFT



Rated Capacity	3500 kg
Platform length	4300 mm
Platform width	680 mm
"Overall length (recessed) inc' flip plate"	4650 m
Overall length (surface mount) inc' ramp	4990 m
Overall width	2160 mm
Minimum platform height	140 mm
Maximum platform height	1850 mm
Distance between platforms	800 mm
Min foundation depth	≥120 mm
Power requirements	400 V, 50 Hz, 3 ph
Motor Power (Dual)	1 x 3.5 kW • 1 x 2.2 kW
Pneumatic working pressure	6-8 bar
SPD 2000 Play Detector	
Certified maximum weight	1300 kg per wheel

FULL HEIGHT SCISSOR LIFT



Rated Capacity	3000 kg
Platform length	1475 mm
Platform width	650 mm
Overall length (surface mount) inc' locking ramps	2000 mm
Overall width	2200 mm
Minimum platform height	110 mm
Maximum platform height	1850 mm
Distance between platforms	900mm
Min foundation depth	≥150 mm
Power requirements	400 V, 50 Hz, 3 ph
Motor Power	2.2 kW
Pneumatic working pressure	6-8 bar
Noise level	≤75 dB
Operation	Electro-hydraulic

SSL-35 MID-RISE SCISSOR



Rated Capacity	3000 kg
Platform length	1420 mm
Platform width	460 mm
Overall length (surface mount) inc' locking ramps	2028 mm
Overall width	2125 mm
Minimum platform height	110 mm
Maximum platform height	1000 mm
Distance between platforms	860 mm
Min foundation depth	≥150 mm
Power requirements	230 V, 50 Hz, 1 ph
Motor Power	2.2 kW
Noise level	≤75 dB
Operation	Electro-hydraulic

*Snap-on reserves the right to make changes to specifications without notice and without making changes retroactively.

LIFT SPECIFICATIONS



ELECTRIC AND HYBRID VEHICLE BATTERY LIFT

Rated Capacity	1200 kg
Platform length	1741 + 325 mm
Platform width	900 mm
Overall length	2354 mm
Overall width	900 mm
Maximum platform height	1810 mm
Minimum platform height	800 mm
Base to Floor Clearance	196 mm
Power requirements	220v, 50hz, 1 ph
Control voltage (v)	24



ALIGNMENT SCISSOR LIFT

Rated capacity(kg)	4000
Platform length (mm):	4800
Platform width (mm):	660
Overall length (mm):	5000
Overall width (mm):	2220
Maximum platform height (mm):	1900
Minimum platform height(mm):	230
Distance between platforms (mm):	900
Slip plate length (mm):	2105
Minimum foundation depth:	150mm
Full raised time (with rated load) (s)	≤55
Full lowered time (with rated load) (s)	≤55
Oil tank volume(L)	18
Power requirements:	400 V, 50 Hz, 3 ph
Motor power (kw):	3.5
Hydraulic working pressure (MPa)	23
Pneumatic working pressure (Bar)	6-8
Noise level (dB):	70



MCL 1000 MOTORCYCLE LIFT

Rated capacity(kg)	1000
Platform length (mm):	2200
Platform width (mm):	800
Overall length (mm):	3400
Overall width (mm):	1040
Maximum platform height (mm):	1200
Minimum platform height(mm):	195
Full raised time (with rated load) (s)	<30
Full lowered time (with rated load) (s)	<30
Power requirements:	220 V, 50 Hz, 1 ph
Motor power (kw):	0.75
Handheld control power (v):	24
Noise level (dB):	70

TWO POST BASED LIFT



Rated Capacity	4000 kg	5000 kg
Post height	2904 mm	2912 mm
Drive through width	2558 mm	3006 mm
Internal width between posts	2830 mm	3342 mm
Overall width	3420 mm	4028 mm
Maximum lifting height	1900 mm	1900 mm
Lowest lifting point	80 mm	95 mm
Min foundation depth	≥200 mm	≥200 mm
Power requirements	400V , 3 ph, 50 Hz	400 V, 3 ph, 50 Hz
Motor Power	2.2 kw	2.2 kw
Noise level	≤75 dB	≤75 dB
Operation	Electro-hydraulic	Electro-hydraulic

TWO POST BASELESS LIFT



Rated Capacity	4000 kg	5000 kg
Post height	Short 4150 mm High 4750 mm	Short 4451 mm High 5051 mm
Internal height	Short 4000 mm High 4600 mm	Short 4319 mm High 4919 mm
Drive through width	2558 mm	3006 mm
Internal width between posts	2830 mm	3342 mm
Overall width	3420 mm	4028 mm
Maximum lifting height	1900 mm	1900 mm
Lowest lifting point	85 mm	95 mm
Min foundation depth	≥200 mm	≥200 mm
Power requirements	400 V, 3 ph, 50 Hz	400 V, 3 ph, 50 Hz
Motor Power	2.2 kW	2.2 kW
Noise level	≤75 dB	≤75 dB
Operation	Electro-hydraulic	Electro-hydraulic

SVL-D50 2-POST DYNAMIC CLEAR FLOOR LIFT



Rated Capacity	5000kg
Post height	2912mm
Drive through width	2970mm (2870-3070mm)
Internal width between posts	3342mm (3242-3442mm)
Overall width	4028mm (3928-4128mm)
Maximum lifting height	1900mm
Lowest lifting point	110mm
Min foundation depth	≥250mm
Power requirements	400V, 3 ph, 50Hz
Motor Power	3.5kW x 2
Operation	Electro-hydraulic
Arms	900mm-1800mm
Gross weight	1000kg

KOOLKARE DUAL GAS 12



The SUN® KoolKare Dual Gas 12 car air conditioning machine is a fully automatic and tapless unit for recovery, recycling and recharging with the refrigerants R134a and HFO1234yf. Two different circuits and separated components for each gas ensure the purity of the refrigerant. Intuitive and user-friendly interface guides even inexperienced users safely through the professional air conditioning service.

FEATURES

- | User friendly interface: The 7" high res colour touch screen display guides you through the air conditioning procedure
- | Extensive database: A comprehensive and fully updateable built-in vehicle database with the ability to add new vehicles, ensuring you can service all your customers' vehicles
- | Refrigerant service archive: Unit automatically tracks and logs refrigerant usage in relation to recovery, system filling and bottle filling
- | Refillable hermetically sealed bottles: Prevent oil and dye bottle contamination and ensure a quality air conditioning service - the AC oil is hygroscopic and our system prevents moisture ingress
- | 100 mm analogue gauges: Provides quick and easy referencing
- | Integrated printer provides you with the option to print your test results, which serves as proof of maintenance for your customers
- | 3 m long hoses (6 m option available): Allows for the procedure to be carried out while the vehicle is raised on a lift
- | Hybrid servicing: The Dual Gas can be used to service hybrid cars - hybrid functionality is becoming commonplace and standard machines cannot service these vehicles
- | Automatic system: Saves time and increases workshop productivity as the process can be started left to run with no further user input
- | Our unit allows you to service both R134a and HFO1234yf gassed vehicles: Future proof your workshop
- | One AC unit covering two gases: Save space and have the optionality to service all vehicles
- | Wi-Fi connectivity, allows your to monitor the unit through a compatible smart device

BLIZZARD QTECH IV



The SUN® KoolKare Blizzard QTech IV is a professional air conditioning service machine designed for the automatic recovery, recycling, and recharging of R134a or HFO1234yf refrigerants. This fully mobile unit can be positioned wherever needed in the workshop, making it an excellent choice for garages looking to optimise efficiency and streamline air conditioning servicing.

The system is operated through intuitive touchscreen interface which guides technicians through the entire process. Once initiated, the automatic system boots productivity and saves time by running autonomously, allowing technicians to focus on another task.

FEATURES

- | 7" Colour touchscreen offers a intuitive operational experience guiding technicians through the entire process
- | The automatic system streamlines the servicing process, allowing technicians to start the procedure and focus on other tasks, ultimately saving time. This makes it an ideal choice for garages aiming to optimise efficiency
- | With its automated vacuum leak detection function, the machine identifies system issues before refrigerant is added, helping to prevent wastage and ensure optimal performance
- | The comprehensive vehicle database boosts productivity by automatically loading the correct service procedure and specifications, eliminating guesswork and saving time searching technical resources
- | Refillable hermetically sealed bottles - Eliminate moisture ingress and prevent oil and dye bottle contamination, ensuring a quality air conditioning service
- | Integrated thermal printer provides you with the ability to produce your test results. Doubles as a customer receipt and proof of maintenance
- | Supplied with 3m hoses as standard. Optional 6m hoses available allowing the procedure to be carried out while a vehicle is raised on a lift
- | Can be used to service both EV & Hybrid vehicles
- | Energy-saving, the Blizzard QTech IV consumes 20% less energy compared to previous models
- | Ensures an environmentally responsible air conditioning service in compliance with F-Gas specifications
- | Wi-Fi connectivity, allows you to monitor the unit through a compatible smart device

AIR CONDITIONING PRODUCT FEATURES

KOOLKARE DUAL GAS 12

BLIZZARD QTECH IV



	KOOLKARE DUAL GAS 12	BLIZZARD QTECH IV
Semi or fully automatic model	Fully Automatic/manual	Fully Automatic/ manual
Air Purge Feature	Automatic air purge	Automatic air purge
Filters	2 (1 for each refrigerant)	1
Refillable Hermetic Oil Bottle (PAG46)	Yes	Yes
Refillable Hermetic Dye Bottle	Yes	Yes
Oil Change Procedure	Yes	Yes
Hybrid Function Feature	Yes	Yes
Vehicle Database Feature	Advanced/manual input for New Models & Truck	Advanced/manual input for New Models & Truck
Automatic Vacuum Leak Check Feature	Yes	Yes
Refrigerant Management complies with F gas regulations on keeping records of gas use in and out	Yes	Yes
Nitrogen Leak Check Procedure (With Optional N2 Kit)	Yes	Yes
Flushing Operation (with Optional Flushing Kit)	Yes	Yes

AIR CONDITIONING SPECIFICATIONS

KOOLKARE DUAL GAS 12



BLIZZARD QTECH IV



Type of Refrigerant	R134a and HFO1234ys	R134a or HFO1234ys
Voltage	220-240 V / 50-60 Hz AC	220-240 V / 50-60 Hz AC
Scale Resolution	+10 g	+10 g
Heated Cylinder	Yes	Yes
Working Temperature Range	11 - 49°C	11 - 49°C
Vacuum Pump Capacity	100 l/min rated capacity 0.1 mbar vacuum level	100 l/min rated capacity 0.1 mbar vacuum level
Recovery/Refrigerant Cylinder Capacity Feature	2x 12 L refillable	R134a or HFO1234ys: 12 L refillable
Display	7" Colour Graphic touch screen	7" Colour Graphic touch screen
Overall Size (WxDxH)	670 x 620 x 1070 mm	670 x 680 x 1080 mm
Weight	122 kg	77 kg
Service Hose length	2 sets, 3 m	3 m
Following SAE 2788	Yes	Yes
Class 1 Compliant Gauges	Yes	Yes
Onboard Printer	Yes	Yes

STC5325 | TYRE CHANGER



The STC5325 is a tyre changer designed for all workshop types, for handling standard manufacturer and ultra-high profile tyres.

It offers a high productivity speed via the built-in ProSpeed inverter technology which automatically controls the

speed of the turntable dependant on the torque required when mounting/demounting the tyre, along with a large 22" outer clamping range.

FEATURES

- | ProSpeed automatically selects the best speed for the operation being performed
- | Pneumatic tilting column
- | Outer clamping range (10"-24"; up to 28" with additional adaptors)
- | Table has two cylinders for improved gripping of the rim
- | Side bead breaking with adjustable inclination
- | Assist arm
 - Drop centre pressing tool
 - Rim centre pushing tool
- | Steel head with plastic inserts
- | 16 Amp single-phase supply

OPTIONAL PLUS KIT

- | Plastic bead breaker disc
- | Triangular bead pusher
- | Plastic protector for bead breaker blade
- | Spacers for bead breaker blade
- | Tyre lever plus
- | Smart bead spacer tail
- | Plastic tyre protector

STANDARD ACCESSORIES

- | Plastic rim protectors
- | Lube brush
- | Protector for bead breaker
- | Wave lever bar

STC5545 | TYRE CHANGER



The STC5545 is a tyre changer designed for all workshop types, for handling standard manufacturer and ultra-high profile tyres.

It offers a high productivity speed via the built-in ProSpeed inverter technology which automatically controls the

speed of the turntable dependant on the torque required when mounting/demounting the tyre, along with a large 24" outer clamping range.

FEATURES

- | Low profile cabinet offers flexibility, reliability and ergonomic use
- | ProSpeed automatically selects the best speed for the operation being performed
- | Pneumatic tilting column
- | Pneumatic positioning of demount tool
- | Outer clamping range 10"-24"; up to 28" with additional adaptors
- | Table has two cylinders for improved gripping of the rim
- | Side bead breaking with adjustable inclination
- | Assist arm
 - Drop centre pressing tool
 - Rim centre pushing tool
- | Steel head with plastic inserts
- | 16 Amp single-phase supply

OPTIONAL PLUS KIT

- | Plastic bead breaker disc
- | Triangular bead pusher
- | Plastic protector for bead breaker blade
- | Spacers for bead breaker blade
- | Tyre lever plus
- | Smart bead spacer tail
- | Plastic tyre protector

STANDARD ACCESSORIES

- | Plastic rim protectors
- | Lube brush
- | Protector for bead breaker
- | Wave lever bar
- | Tyre lever protector

*Please note that this image is shown with the optional Plus Kit. The Plus Kit does not come as standard with the STC5545.

TYRE CHANGER SPECIFICATIONS

STC5325

STC5545


Power supply	230V 1ph, 50 Hz, 16 A	230V 1ph, 50 Hz, 16 A
Air supply	8-12 bar	8-12 bar
Dimensions (WxDxH)	1300 x 1700 x 1850 mm	1300 x 1800 x 1920 mm
Noise	<70 dba	<70 dba
Max rim width	13 in	15 in
Max wheel and tyre diameter	1000 mm	1000 mm
Bead breaker range	40 - 392 mm	40 - 392 mm
Bead breaker force	1200 Kgf (2600 lbf-ft)	1200 Kgf (2600 lbf-ft)
Rotation speed	7-18 rpm controlled via ProSpeed	7-18 rpm controlled via ProSpeed
Max table torque	1200 Nm	1200 Nm

SWB100 | WHEEL BALANCER



The SWB100 is a digital wheel balancer for cars, light trucks and motorcycles that combines the expected brand accuracy with a small footprint and value for money.

It includes 2D SAPE (Semi-Automatic Parameter Entry) to measure wheel offset and wheel diameter in one process,

the VPI measuring system for high accuracy, and split weight mode to hide weights behind spokes for a better finish.

FEATURES

- | Clear and intuitive LED display
- | Semi-automatic data entry with a hand-operated gauge arm with easyALU™ assisted rim data entry for diameter and distance. Touch the rim with the gauge arm to enter the rim dimensions and automatically select the weight balancing mode
- | VPI measuring system for high accuracy and repeatability
- | Split weight mode helps the technician conceal the weights behind the spokes, preserving the wheels visual presentation
- | Tyre matching mode - optimise tyre to rim
- | Small footprint
- | Measuring speed 100 rpm
- | Wheel guard

STANDARD ACCESSORIES

- | Cones of 42-77 mm, 72-99 mm and 96-116 mm diameter
- | Universal drum plus drum cushion
- | Rim width callipers
- | Universal weight pliers
- | Calibration weight
- | 4 x storage pegs
- | Stick-on weight removal tool

SWB200S | WHEEL BALANCER



The SWB200S is a professional video wheel balancer for cars, light trucks and motorcycles - with 2D SAPE (Semi-Automatic Parameter Entry) and Smart Sonar for input of

all the key measurements, wheel offset, wheel diameter and wheel width.

FEATURES

- | Smartsonar™ Automatic rim width detection using sonar sensors to avoid manual entry errors, and give up to 30% time savings compared to manual data input
- | Intuitive control panel and video display
- | Semi-automatic data entry with a hand-operated gauge arm with easyALU™ assisted rim data entry for diameter and distance. Touch the rim with the gauge arm to enter the rim dimensions and automatically select the weight balancing mode
- | VPI measuring system for high accuracy and repeatability
- | QuickBal for reduced measurement time by up to 30%
- | Semi-automatic weight selection of balancing mode with easyAlu.
- | Split weight mode helps the technician conceal the weights behind the spokes, preserving the wheels visual presentation
- | Tyre matching mode - optimise tyre to rim
- | Small footprint
- | Measuring speed 200 rpm
- | Wheel guard

STANDARD ACCESSORIES

- | Cones of 42-77 mm, 72-99 mm and 96-116 mm diameter
- | Universal drum plus drum cushion
- | Universal weight pliers
- | Calibration weight
- | 4 x storage pegs
- | Stick-on weight removal tool

SWB340L | WHEEL BALANCER



The SUN SWB340L is a professional touchscreen wheel balancer for cars, light trucks and motorcycles with 2D SAPE - Semi-Automatic Parameter Entry - and Smart Sonar input for automatic measurement of wheel offset, wheel diameter and wheel width, and a pinpoint laser.

At the end of the spin cycle, the EasyWeight pinpoint laser pointer indicates the location of the weight placement (stick-on weights). Smart Sonar gives a 30% time saving on data entry compared to manual input.

FEATURES

- | Smartsonar™ Automatic rim width detection using sonar sensors to avoid manual entry errors, and give up to 30% time savings compared to manual data input
- | Split weight mode helps the technician conceal the weights behind the spokes, preserving the wheels visual presentation
- | VPI measuring system: Achieve accuracy and reliability by limiting discrepancies caused by changes in ambient temperature
- | Tyre matching mode: Optimise tyre to rim
- | QuickBal: Reduce measurement time by 30%
- | Semi-automatic data entry with a hand-operated gauge arm with easyALU™ assisted rim data entry for diameter and distance. Touch the rim with the gauge arm to enter the rim dimensions and automatically select the weight balancing mode
- | User friendly interface with video display: The colour touchscreen, guides you through the balancing process step by step with useful images and videos
- | EasyWeight laser: Pinpoint the exact location for tape weight placement

STANDARD ACCESSORIES

- | Cones of 42-77 mm, 72-99 mm and 96-116 mm diameter
- | Universal drum plus drum cushion
- | Universal weight pliers
- | Calibration weight
- | 4 x storage pegs
- | Stick-on weight removal tool

WHEEL BALANCER SPECIFICATIONS

SWB100



SWB200S



SWB340L



Adhesive weight position	Placement via SAPE arm	Placement via SAPE arm	EasyWeight via laser pointer
Hidden weight mode	Yes	Yes	Yes
Optimisation program	Yes	Yes	Yes
Balancing program selection	Manual	Semi-automatic - easyALU	Semi-automatic - easyALU
Spoke position detection	Manual	Manual	Manual
Wheel clamping	Quick nut	Quick nut	Quick nut
Cycle start	Automatic on closing hood	Automatic on closing hood	Automatic on closing hood
Wheel braking after measurement	Automatic	Automatic	Automatic
Maximum wheel width	20 in	20 in	20 in
Maximum wheel diameter	960 mm	960 mm	960 mm
Maximum wheel weight	70 kg	70 kg	70 kg
Power supply	230V 1ph, 50 Hz, 13A	230V 1ph, 50 Hz, 13A	230V 1ph, 50 Hz, 13A
Dimensions (WxDxH)	1100 x 1005 x 1711 mm	1012 x 781 x 1834 mm	1371 x 877 x 1661 mm

EZ-ADAS RECALIBRATION SYSTEM



The EZ-ADAS(tm) Recalibration System is an innovative collection of precision tools with sophisticated design. Using laser measurement and intuitive target adjustment features it reduces the risk of errors. Our solution includes a comprehensive target kit, minimal recalibration alignment components and simplified

instructions making it more efficient than other systems on the market, significantly reducing set-up steps.

This system works hand-in-hand with our diagnostic tools using current software, supplying you market-leading ADAS coverage and robust features to complete the job right the first time.

ADAS RECALIBRATION SYSTEM

TS100 Target Stand	Front camera recalibration alignment fixture. Precision laser alignment positioning to the vehicle centreline. Accepts multiple recalibration targets and allows simple, quick adjustments
AS10 Alignment Fixture	Multi-function, precision laser positioning and centring fixture for front camera, front radar and rear camera recalibrations
AS20 Alignment Fixture	Multi-position, precision laser alignment fixture for front camera, front radar and rear camera recalibrations
Laser Stand	Green line lasers used with alignment fixtures allow fast, accurate positioning

EQUIPMENT FEATURES

- Fewer components and a smaller footprint with collapsible mast make the system easier to manoeuvre and store when not in use
- Target stand
 - Highly visible integrated and adjustable rulers
 - Multi-position lever locks to easily secure target
 - Clutch brake height adjuster allows precision front camera target height positioning
 - The Zero Stop allows precise front camera target positioning for select auto manufacturers
 - Tape measure mounted stand, one-person target positioning and set-up
- The AS10 Fixture with laser and mirror for faster and easier alignment positioning for front, rear and radar recalibration
- Graduated, easy-to-see laser positioning guides help to quickly align fixtures to vehicle position
- Green line lasers for multi-position use to support various system recalibrations

ACCESSORIES

Target stand, mast, ruler, clutch brake height adjuster, mast lock, target multiposition lever locks, centreline finder with laser indication, Zero Stop, laser and 8 meter tape measure

FOR THE FULL LIST OF FRONT AND REAR CAMERA TARGETS AND RADARS, ADAS CALIBRATION SIDE MATS PLEASE VISIT:
DIAGNOSTICS.SNAPON.CO.UK/EZ-ADAS

COMMERCIAL DIAGNOSTICS UNIT



PANASONIC TOUGHBOOK® 14"

Military grade, rugged PC, proven to withstand the rigours of a garage environment

- | Liquid-resistant keyboard/touchpad
- | Up to 20 hours of battery life
- | Windows 10 Pro

FEATURES

- | A quick and intuitive software interface
- | Coverage for trucks, PSV and light commercial vehicles
- | Optional coverage configurations include: agricultural, off-highway and material handling vehicles
- | Automatic detection of systems and error codes
- | Troubleshooting by symptoms and errors
- | Integrated technical information, wiring diagrams and technical documents
- | Scheduled updates and latest development implementations
- | Call centre for technical and product support
- | Step-by-step installation manuals and technical information are available from i-parts assist.
- | Repair time estimation
- | 12 months of online software upgrades included

The SUN Commercial Diagnostics Unit is designed to perform advanced vehicle diagnostics and maintenance tasks, ideal for heavy-duty vehicles including trucks, light commercial and PSVs.

See detailed information including error codes, ECU data, wiring diagrams and repair time estimations as well as perform functional tests and calibration of components.

ACCESSORIES

- | LINK V9
- | Cables
- | Electronic Test Module - this module allows you to check the operation of the many electronic modules used in commercial vehicles



Optional cables and accessories available, get in touch to find out more



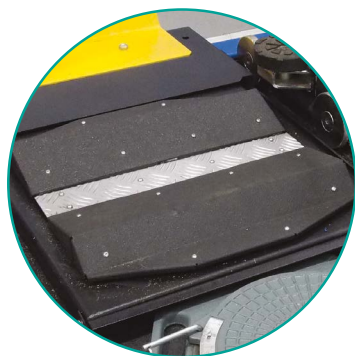
UNCOMPROMISING QUALITY SINCE 1931

HOFMANN® 

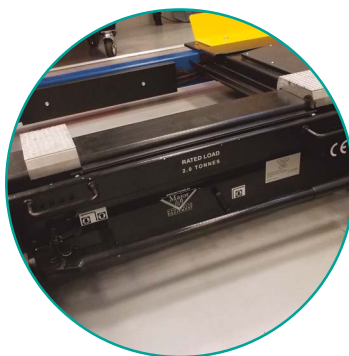


DVSA APPROVED MOT EQUIPMENT

DETAILED OVERVIEW



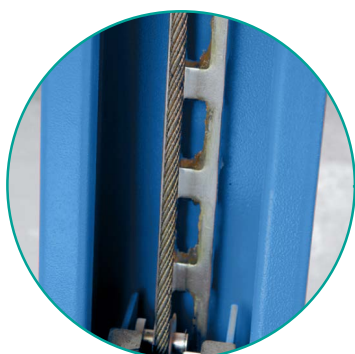
Our play detectors are more likely to find fault than any other on the market as they accentuate any wear in steering



Integral jacking beam has one of the highest lifting capacities on the market at 500 mm



Heavy duty recessed bearing radius plates - minimum maintenance



Safety ladder locks on all posts

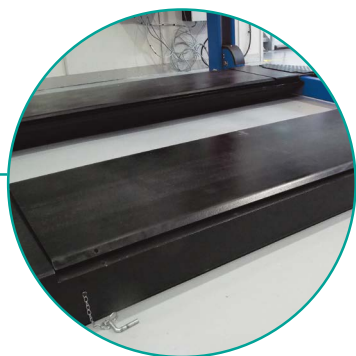


Unique dimple design with 10-year roller surface warranty; locked roller for easy exiting

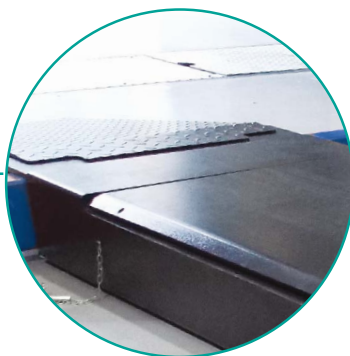


Fully galvanised chassis





Integrated rear slip plates allowing for dual usage when carrying out wheel alignment



High quality finish platform



Convex inspection mirrors



"Connected" approved. Unique Snap-on IOT manager allows you securely communicates with the DVSA 'MTS' System.



Integrated wireless inspection lamp incorporating buttons for play detector operation



CONNECTED AUTOMATED TEST LANE



HOFMANN's ATL is a DVSA-approved automated test lane system for one person operated MoT testing for class IV and VII with the optional class I, II, III and class VL ability.

At the heart of the HOFMANN ATL is the geogas 6000 link, with a large 27" monitor providing clear visible information in your workshop.

Using Windows-based, icon-driven software, the HOFMANN ATL requires minimum training for the test to be completed. Test procedures can be performed in fully automatic mode or manually.

The new connected geogas 6000 link has been engineered from start to finish to make your MoT testing process fast and reliable. Every aspect of the geogas 6000 link is designed to enhance your MoT bay and make the job easier and quicker.

Plus the new health check feature looks beyond your MoT bay to see where you could make additional revenue from vehicle faults.

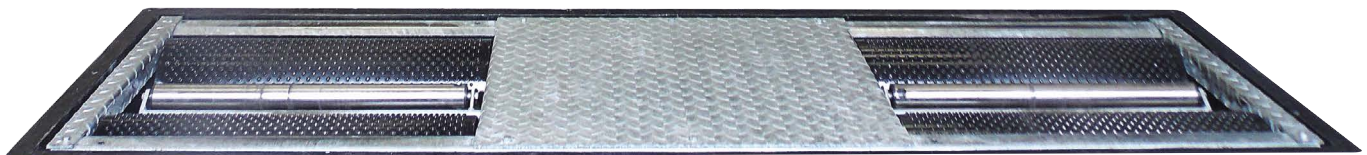
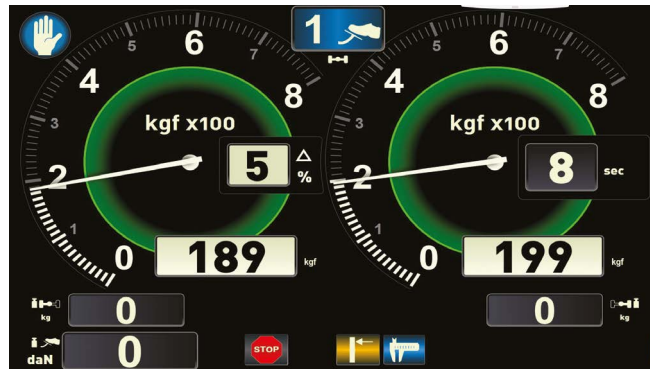
The brake rollers have a fully galvanised steel chassis for maximum protection against corrosion, and have been designed for installation into a dedicated recess.

The 4 post lift comes with rear slip plates and turnplates built in as standard, along with a long 5.2 m or 5.7 m platform length. This high quality lift goes through a rigorous inspection before it is even despatched to you for installation by our expert installation team.

FEATURES

- | geogas 6000 link connected emissions analyser with large screen
- | Class IV or VII lift with integral play detector
- | Bearing radius plates
- | Jacking beam 2000 kg or 2800 kg
- | Connected Class IV or VII roller brake tester, with easy-to-use PC software
- | Brake roller cover plates
- | Rail mounted headlight beam setter
- | Can easily be upgraded to cover Class I and II tests
- | Four-post lift has integrated slip plates make the most of your investment by including a wheel alignment package
- | Heavy duty recessed bearing radius plates minimum maintenance
- | Unique dimple design for brake tester with a 10 year surface warranty
- | Hydraulic play detectors are more likely to find faults than any other on the market as they accentuate any wear in steering components
- | Integral inspection lamp incorporating buttons for play detector operation
- | Elephant trunking as standard to help keep pipes and hoses tidy
- | Safety ladder locks on all posts
- | ATL scissor lift with integral play detector option is also available
- | Connected decelerometer available

CONNECTED ROLLER BRAKE TESTERS



Take the brakes off brake testing with the HOFMANN system. The range includes MoT Class IV and Class VII brake testers, ATL brake testers (Automated Test Lanes), motorcycle brake testers and comes with an exclusive 10-year roller brake surface warranty.

The HOFMANN roller brake testers have been developed to meet the latest DVSA regulations for connected MoT testing with quick and accurate results.

FEATURES

- The Roller brake tester is approved for DVSA “connected” requirements: Connected MoT equipment is able to talk directly to the DVSA's system with a single button press and reduce or eliminate any data entry errors.
- Built to last: The chassis is built from fully galvanised steel for long life and include roller covers as standard
- Designed for ease of use: The graphical user interface is designed for ease of use and simulates the well-known meter displays from the older analogue units while including all the benefits of modern technology and the latest ATL test procedure and manual brake testing functions
- HOFMANN Brake Testers are supplied with a 27” monitor, printer and database for saving test results as standard.
- The roller brake surface includes a 10-year warranty, giving you long-term peace of mind.
- Two chassis options giving you the highest Class IV & VII specifications in the industry
 - 700 mm rollers have a drive over capacity of up to 4000 kg (800 Kgf brake force) and can be used for MoT class I, II, III, and IV
 - 1000 mm rollers have a drive over capacity up to 6000 kg (1250 Kgf brake force) and can be used for MoT class I, II, III, IV, VL and VII (class I and II require optional adaptor plate)

- Unique roller surface: The dimpled roller surface is designed to offer protection to tyres while giving a coefficient similar to the road surface, allowing for accurate and repeatable results wet or dry.
- Weighing by wheel: The weighing system allows weighing by wheel (standard on ATL, optional on non-ATL).
- Wireless connectivity: With the wireless connectivity option between the roller chassis control box and the PC you have the flexibility to place your PC/display in the most convenient place in the workshop for testing (within the required range).

STANDARD ACCESSORIES

- 15 m cable as standard (optional 25 m cable available)
- Radio remote control



GEOGAS 6000 LINK CONNECTED EMISSIONS ANALYSER

The geogas 6000 LINK has been designed to seamlessly integrate the DVSA's MoT Testing System (MTS), the emissions tester, the HOFMANN brake tester and decelerometer, providing you with a simple and unique design that links all your MoT testing equipment together. Saving you and your team time in training, set-up and your ongoing work processes.

With the geogas 6000 link you can do more for your customers by identifying customer vehicle faults before they become a problem, including emissions related pending codes. This is done simultaneously whilst you are doing the test, with no additional user input required. Use this feature to generate additional revenue by identifying and recommending repairs to your customers.



FEATURES

- | The EOBD dongle makes oil temp and RPM measurement a breeze
- | Intuitive software, simple menu items
- | Familiar feel for anyone that's previously used a HOFMANN emissions machine
- | Extra large 27" widescreen display
- | Large graphics can be easily seen from a long distance
- | Battery-powered SGMIII Gas Module, no long metre hose to unroll and coil up before and after every test
- | Use as your DVSA MTS (MoT Testing System) device - in the workshop, where you need it, when you need it
- | Zero emissions vehicles are tested quickly with Zero reading by monitoring RPM increase
- | Market leading technology! We've been providing MoT emissions testing equipment for over 30 years
- | Built by Snap-on in the United Kingdom, using only high-quality components
- | Our unique and superior water handling function means the gas module won't be flooded or experience any issues due to water ingress
- | A Solid State hard drive means no moving parts in the PC for speed and reliability
- | Quality branded PC equipment
- | Wireless laser printer that can be moved to where it is most convenient for you
- | Robust wireless Petrol and Diesel modules - designed for the workshop environment
- | The gas and diesel smoke meter remains heated so it is always ready to measure - no need to wait for it to warm up
- | Fully upgradeable system that allows you to add a HOFMANN roller brake tester and 3D wheel alignment
- | OBD health-check function takes no extra time to earn extra revenue
- | Integrated connected decelerometer software making data transfer much easier
- | Quicklinks function allows you to access your most used websites at the touch of a button
- | 2 years warranty covering all aspects of the equipment inc. PC, keyboard, mouse and monitor
- | Auto error-reporting back to the service centre
- | A team of GEA accredited Snap-on Service Engineers situated throughout the country: so qualified help is never far away
- | Your service teams visit for calibrations and maintenance are scheduled by our expert UK customer care team - plus get live updates on service engineer arrival times
- | Integrated Snap-on consumables web link: order spares right there on your emissions analyser
- | Software and DVSA updates downloaded via the Internet saving you time and hassle
- | Product support technicians are always there for you at the end of the phone
- | On-site service engineers are equipped with large spares inventory, for faster first time fix

*Additional cost may apply.

ONE PERSON TEST LANE SCISSOR



The HOFMANN SSL 6350 car scissor lift from HOFMANN allows for one-person testing and can be fitted into existing bay recesses - making it a perfect solution for current MoT stations wanting to bring their equipment right up to date while minimising disruption to their businesses.

It has a 3500 kg lifting capacity and meets requirements for Class IV testing and requires no additional groundworks (some exceptions may apply) for installation into a current MoT bay with four-post lift. The SSL 6350 is also ideal for new MoT sites with limited space.

FEATURES

- DVSA-approved play detector with wireless control
- Only 140 mm high when fully lowered
- Locking ladder provides additional safety when working under vehicle
- Six hydraulic rams for easy lifting from low height

- Front and rear twin torsion bars for better stability when using the play detector
- Electronic out-of-level sensing system will automatically stop the lift if it is not level

SSL-35 MID-RISE SCISSOR SERVICE LIFT



The HOFMANN SSL-35 is a 3500 kg electro-hydraulic mid-rise scissor service lift, designed for use predominantly within tyre shops and small garages to lift cars and light commercial vehicles.

The small size and portability make this a great investment for any busy garage. It is ideal for general garages and multi-bay repair centres, along with independent garages and workshops.

FEATURES

- | | |
|---|--|
| <ul style="list-style-type: none"> Portable kit, comes with set of moving wheels to move around the workshop | <ul style="list-style-type: none"> Locking platform extension for lifting longer vehicles |
| <ul style="list-style-type: none"> Pneumatic safety locking | <ul style="list-style-type: none"> Single phase operation |
| <ul style="list-style-type: none"> 4 rubber lifting blocks | <ul style="list-style-type: none"> Hydraulic pressure overload protection |
| | <ul style="list-style-type: none"> 24 V safety system on platform |

SSL-3000 DOUBLE SCISSOR SERVICE LIFT



The HOFMANN SSL-3000 is a double scissor (full height) short sill service lift designed for surface-mounted installation. It has a 3000 kg lifting capacity, a four

hydraulic ram system for added safety and stability between platforms, and pneumatic safety locks.

FEATURES

- Easy to handle drive-on and drive-off ramps
- Hydraulically synchronised platforms
- Overload safety valve
- Safety valve incase of sudden loss of pressure
- Automatic lowering control
- 'Dead man' controls, 24 V
- Set of 4 rubber pads
- 'Buzzer' on last portion of descent

OPTIONS

- Single phase version
- Recess frame
- Kit of embedded run-on and run-off skids
- Additional set of lifting pads available

ELECTRIC AND HYBRID VEHICLE BATTERY LIFT



The HOFMANN Electric and Hybrid Battery Lift is a dedicated lifting table to assist with mounting and removing batteries from electric and hybrid vehicles. It features a dual-speed electro-hydraulic lifting system and has a total lifting capacity of 1200kg within a lifting range of 800mm to 1810mm

FEATURES

- | Two lifting modes for standard and slow lifting
- | Electrically released mechanical locking system
- | Hand-held lift controls with stop, slow rise, standard rise, and down functions
- | The suspended platform can tilt within a height of 40mm. The lower platform can move laterally within a distance of 20mm
- | Reserved holes (100mm x100mm) on the working table for positioning and fixing components
- | Can also be used to remove and mount engine, gearbox, drive axle, fuel tank and suspension of petrol- and diesel-powered vehicles.
- | Oil hose with double steel wire fabrications, which has passed pressure test under 40MPa, can work under twice the nominal working pressure without breakage.
- | Pins and pads for positioning and fixing components
- | Lifting capacity of up to 1200kg
- | Lifting range: 800 to 1810mm

MTF 3000 3T ELECTRO MECHANICAL ASYMMETRICAL TWO POST SERVICE LIFT



The HOFMANN MTF 3000 is a standard service lift without base frame and with mechanical synchronisation

control that is designed for cars, vans and light trucks of a gross vehicle weight of up to three tonnes.

FEATURES

- Perfect ground clearance - no base frame
- Asymmetrical design, car door access on two sides
- Automatic arm locks
- Low pick-up height
- Electro-mechanical drive
- Rugged long-life column profile

- Rolled-thread lifting spindles
- Automatic lubrication system
- Four pick-up pads vertically adjustable from approximately 98-140 mm, 120 mm diameter
- Two mechanically synchronised drive motors

ALIGNMENT SCISSOR LIFT



The HOFMANN SSL 6400 Alignment Scissor Lift 4T is intended primarily for use in small garages, tyre centres and wheel alignment specialists specialists. Measuring a total length of 5m and featuring long rear slips and configurable infills, the turntable positioning can be changed to fit a variety of vehicles, from cars to light commercials.

This heavy-duty Alignment Scissor Lift has a maximum lifting capacity of 4000kg and can lift between a range of 230mm and 1900mm. Available for installation in either recess or surface-mount configurations. It features low-profile platforms engineered with high planeness to guarantee perfect wheel alignment.

The scissor construction has several benefits over 2 and 4 post systems, including taking up less space in the workshop and preventing post obstruction. The lift's open-front design provides easy access to the vehicle's alignment and calibration points, as well as clear visibility of alignment systems positioned in front of the lift.

Pneumatic locks are part of the electro-hydraulic six ram system for increased stability and safety between the platforms.

FEATURES

- | | |
|--|--|
| <ul style="list-style-type: none"> Suitable for a wide range of vehicles from small cars to light commercial vehicles Available in recess or surface mount configurations Maximum lifting weight of 4000kg within a range of 230mm - 1900mm Smaller footprint over 2 & 4 post systems Four hydraulic cylinders in a cross aligned arrangement provide secure lifting power and added safety Approach ramps are equipped with end rollers to minimise noise and reduce floor damage Long rear slips and adjustable turntable positioning via configurable in-fills Turning plates as standard | <ul style="list-style-type: none"> Uses a 24V control system for safer operation Safety features: Max height and safe decent limit switch Anti-surge safety descent valve Platform synchronisation safety Pneumatic locks are part of the quad electro-hydraulic ram system for increased stability and safety between the platforms Self-lubricating bushing and bearings Alignment inspection and adjustment areas are illuminated by four independently programmable LED light strips, included as standard Includes hose covers, rails for jacking beam |
|--|--|

LIFT SPECIFICATIONS

DUAL REVENUE FOUR POST LIFT



Rated Capacity	4000 kg	5000 kg
Platform length	5200 mm	5700 mm
Platform width	630 mm	630 mm
"Overall length (recessed) inc' flip plate"	5600 mm	6100 mm
Overall length (surface mount) inc' ramp	6350 mm	6850 mm
Overall width	3310 mm	3310 mm
Minimum platform height	190 mm	190 mm
Maximum platform height	1830 mm	1830 mm
Distance between platforms	800 mm	800 mm
Slip plate length	1980 mm	2480 mm
Min foundation depth	≥200 mm	≥200 mm
Power requirements	400 V, 50 Hz, 3 ph	400 V, 50 Hz, 3 ph
Motor Power	3.0 kW	3.0 kW
SPD 2000 Play Detector		
Certified maximum weight	1300 kg per wheel	1300 kg per wheel

OPTL SCISSOR LIFT



Rated Capacity	3500 kg
Platform length	4300 mm
Platform width	680 mm
"Overall length (recessed) inc' flip plate"	4650 mm
Overall length (surface mount) inc' ramp	4990 mm
Overall width	2160 mm
Minimum platform height	140mm
Maximum platform height	1850mm
Distance between platforms	800 mm
Min foundation depth	≥120 mm
Power requirements	400 V, 50 Hz, 3 ph
Motor Power (Dual)	1 x 3.5 kW • 1 x 2.2 kW
Pneumatic working pressure	6-8 bar
SPD 2000 Play Detector	
Certified maximum weight	1300 kg per wheel

MID RISE SCISSOR SSL-35



Rated Capacity	3500 kg
Platform length	1420 mm
Platform width	460 mm
Overall length (surface mount) inc' locking ramps	2028 mm
Overall width	2125 mm
Minimum platform height	110 mm
Maximum platform height	1000 mm
Distance between platforms	860 mm
Min foundation depth	≥150 mm
Power requirements	230 V, 50 Hz, 1 ph
Motor Power	2.2 kW
Noise level	≤75 dB
Operation	Electro-hydraulic

FULL HEIGHT SCISSOR SSL-3000



Rated Capacity	3000 kg
Platform length	1475 mm
Platform width	650 mm
Overall length (surface mount) inc' locking ramps	2000 mm
Overall width	2200 mm
Minimum platform height	110 mm
Maximum platform height	1850 mm
Distance between platforms	900 mm
Min foundation depth	≥150 mm
Power requirements	400 V, 50 Hz, 3 ph
Motor Power	2.2 kW
Pneumatic working pressure	6-8 bar
Noise level	≤75 dB
Operation	Electro-hydraulic

*Snap-on reserves the right to make changes to specifications without notice and without making changes retroactively.

LIFT SPECIFICATIONS



ELECTRIC AND HYBRID VEHICLE BATTERY LIFT

Rated Capacity	1200 kg
Platform length	1741 + 325 mm
Platform width	900 mm
Overall length	2354 mm
Overall width	900 mm
Maximum platform height	1810 mm
Minimum platform height	800 mm
Base to Floor Clearance	196 mm
Power requirements	220v, 50hz, 1 ph
Control voltage (v)	24



ALIGNMENT SCISSOR LIFT

Rated capacity(kg)	4000
Platform length (mm):	4800
Platform width (mm):	660
Overall length (mm):	5000
Overall width (mm):	2220
Maximum platform height (mm):	1900
Minimum platform height(mm):	230
Distance between platforms (mm):	900
Slip plate length (mm):	2105
Minimum foundation depth:	150mm
Full raised time (with rated load) (s)	≤55
Full lowered time (with rated load) (s)	≤55
Oil tank volume(L)	18
Power requirements:	400 V, 50 Hz, 3 ph
Motor power (kw):	3.5
Hydraulic working pressure (MPa)	23
Pneumatic working pressure (Bar)	6-8
Noise level (dB):	70



MTF 3000

Rated Capacity	3000 kg
Internal height (to cross bar)	3300 mm - 4200 mm
Drive through width	2246 mm
Overall width	3200 mm
Maximum lifting height	1890 mm
Lowest lifting point	98 mm
Min foundation depth	"≥200 mm Reinforced ≥300 mm w/o"
Power requirements	400 V, 3 ph, 50 Hz
Motor Power	2 x 1.8 kW
Pad diameter	120 mm
Noise level	75 dB (A)
Operation	Electro-Mechanical

*Snap-on reserves the right to make changes to specifications without notice and without making changes retroactively.

3300-24 | TYRE CHANGER



The HOFMANN monty 3300-24 SmartSpeed is a tyre changer with standard turntable clamping designed for all workshop types, for handling standard manufacturer and ultra-high performance tyres. It offers a high productivity speed via the built-in SmartSpeed inverter technology

which automatically controls the speed of the turntable dependant on the torque required when mounting/demounting the tyre, along with a large 24 in outer clamping range.

FEATURES

- | Pneumatic tilting column: Move the tilting column backwards easily so you are free to access the tyre
- | Assist arm: Mount and demount tyres with ease using the drop centre & rim centre pressing tools
- | Two pneumatic cylinders: Get a 30-40% increase in clamp force compared to single cylinder designs
- | Mount/demount function: The steel head and plastic inserts protect the wheel rim when mounting and demounting tyres
- | smartSpeed: Automatically select the best speed for the operation being performed giving you a more controlled operation
- | Built in tool box, tyre inflator and standard gauge: Provides ease of use and ergonomic benefits
- | Wheel clamps: The 3300-24 has a outer clamping up to 24" as standard (optional 28" adapters available)

OPTIONAL PLUS KIT:

- | Plastic bead breaker disc
- | Triangular bead pusher
- | Plastic protector for bead breaker blade
- | Spacers for bead breaker blade
- | Tyre lever
- | Smart bead spacer tail
- | Plastic tyre protector
- | Tyre lever and protector
- | Bead breaker blade protector
- | Light alloy rim protectors for jaws (front + rear)

STANDARD ACCESSORIES:

- | 5kg lube bucket holder
- | Brush
- | Clip-on plastic rim protector
- | Plastic rim protection kit for mounting head

3300 RACING PLUS | TYRE CHANGER



The HOFMANN monty 3300 Racing Plus tyre changer with standard turntable clamping is ideal for all workshop types, for handling standard manufacturer and ultra-high performance tyres. It includes the Plus Kit as standard and offers a high productivity speed via the built-in

SmartSpeed inverter technology which automatically controls the speed of the turntable dependant on the torque required when mounting/demounting the tyre, along with a large 24 in outer clamping range. The 3300 Racing Plus features a low profile cabinet design.

FEATURES

- | Pneumatic tilting column: Move the tilting column backwards easily so you are free to access the tyre
- | Assist arm: Mount and demount tyres with ease using the drop centre & rim centre pressing tools
- | Two pneumatic cylinders: Get a 30 - 40% increase in clamp force compared to single cylinder designs
- | Mount/demount function: The steel head and plastic inserts protect the wheel rim when mounting and demounting tyres
- | smartSpeed: Automatically select the best speed for the operation being performed giving you a more controlled operation
- | Low profile cabinet: Benefit from improved ergonomics, greater flexibility and the opportunity to manage wider tyres, allowing you to service small to top-end executive cars
- | Built in tyre inflator and precision gauge: The integrated tools provide ease of use and ergonomic benefits
- | Wheel clamps: The monty 3300 Racing SmartSpeed Plus has a outer clamping up to 24" as standard (optional 28" adapters available)

PLUS KIT AS STANDARD:

- | Plastic bead breaker disc
- | Plastic protector for bead breaker blade
- | Spacers for bead breaker blade
- | Tyre lever
- | Smart bead spacer tail
- | Plastic tyre protector
- | 5 kg lube bucket holder,
- | Brush
- | Tyre lever + protector,
- | Clip-on plastic rim protector
- | Bead breaker blade protector
- | Light alloy rim protectors for jaws (front + rear)
- | Plastic protection kit for mounting head

Product is pictured with the optional Plus Kit, which does not come as standard.

8800S | TYRE CHANGER



The HOFMANN monty 8800S SmartSpeed professional tyre changer with innovative leverless mount and demount system is the perfect choice for high-volume tyre shops for handling standard manufacturer, ultra-low profile tyres add ultra high performance and run flat tyres with high aspect ratio. It features a patented centre-post

design for fast, effortless and damage-free wheel clamping. The 8800S offers the best speed possible via the built-in SmartSpeed inverter technology which automatically controls the speed of the turntable dependant on the torque required when mounting/demounting the tyre.

FEATURES

- | powerMONT, the innovative leverless mount and demount system: Easy, fast and effortless solution for mounting and demounting of the tyre
- | quickLOK™ automatic centre-post clamping system: Electromechanical lock and unlock function for faster clamping
- | SmartSpeed: Automatically controls the speed of the turntable dependant on the torque required when mounting/demounting the tyre
- | Optimum bead breaker system for maximum performance: Dynamic bead breaker with two disks for run-flat and low profile tyres. Precise, ergonomic and effortless. On-floor bead breaker, the fastest solution for tyres with high aspect ratio
- | PBD330, pneumatic bead depressor: Essential tool for convenient demounting of hard sidewall tyres
- | Brush, 5 kg lube bucket holder, bead extraction tool, clip-on type plastic tyre protector, bead clamp, Smart Bead Spacer, MH tractor kit, PBD 330 pneumatic bead assist device



TYRE CHANGER SPECIFICATIONS

CAR AND MOTORCYCLE TYRE CHANGERS

3300-24



3300 RACING PLUS



Maximum wheel diameter	39 in	39 in
Rim width	Up to 12 in	Up to 14 in
Rotation speed	7-18 rpm controlled via SmartSpeed	7-18 rpm controlled via SmartSpeed
Maximum clamping range	10-28 in*	10-28 in*
Power	230V 1 ph, 50 Hz, 16 A	230V 1 ph, 50 Hz, 16 A
Dimensions (WxDxH)	1050 x 1400 x 1850 mm	1050 x 1400 x 1850 mm
Machine weight	265 kg	265 kg

8800S



Maximum operational rim diameter	47 in
Rim width	1-15 in
Maximum wheel weight	70 kg
Dimensions (WxDxH)	1490 x 1870 x 1880 mm
Machine weight	500 kg

*Additional adaptors required

7100 | WHEEL BALANCER



The HOFMANN geodyna 7100 is a digital wheel balancer for cars, light cars and light commercial vehicles. It includes 2D SAPE quickBAL - Reduced cycle time by up to 30% to measure wheel offset and wheel diameter in one process, the VPI measuring system for high accuracy, and split weight mode to hide weights behind spokes for a better finish.

FEATURES

- | 2D SAPE (Semi-Automatic Parameter Entry): Measure the wheel offset and wheel rim diameter in one process
- | Split weight mode helps the technician conceal the weights behind the spokes, preserving the wheels visual appearance
- | VPM measuring system: Achieve accuracy and reliability by limiting discrepancies caused by changes in ambient temperature
- | Optimisation program: During the optimisation procedure rim and tyre are adjusted relative to each other on the basis of different unbalance measurements

The HOFMANN geodyna 7100M is a digital wheel balancer for predominantly motorcycles and includes motorcycle adaptors as standard.

- | Constant measuring speed: The 7100 provides a measuring speed of 100 rpm
- | User friendly LED interface
- | Cones of 42-77 mm, 72-99 mm and 96-116 mm diameter
- | Universal drum plus drum cushion
- | Universal weight pliers
- | Rim width callipers
- | Calibration weight
- | 4 x storage pegs
- | Stick-on weight removal tool



7200S | WHEEL BALANCER



The HOFMANN geodyna 7200S is a video wheel balancer for cars, light trucks and motorcycles*. It includes a 2D SAPE (Semi-Automatic Parameter Entry) to measure wheel offset and wheel diameter in one process, the VPI measuring system for high accuracy, split weight mode

to hide weights behind spokes for a better finish, and an intuitive control panel and video display. The 7200S also features easyALU technology for automatically selecting the weight balancing mode.

FEATURES

- | 2D SAPE (Semi-Automatic Parameter Entry): Measure the wheel offset and wheel rim diameter in one process
- | Smart Sonar gives 30% time savings compared to manual data input and removes potential input error
- | Split weight mode helps the technician conceal the weights behind the spokes, preserving the wheels visual presentation
- | VPM measuring system: Achieve accuracy and reliability by limiting discrepancies caused by changes in ambient temperature
- | Optimisation program: During the optimisation procedure rim and tyre are adjusted relative to each other on the basis of different unbalance measurements
- | Small footprint: The compact unit makes the most of your garage space
- | QuickBal: Reduce measurement time by 30%
- | Semi-automatic pre-selection of balancing mode via easyALU™
- | Constant measuring speed: Get a measuring speed of 200 rpm
- | User friendly interface with video display: The display, guides you through the balancing process step by step with useful images and videos
- | Cones of 42-77 mm, 72-99 mm and 96-116 mm diameter
- | Universal drum plus drum cushion
- | Universal weight pliers
- | Rim width callipers
- | Calibration weight
- | 4 x storage pegs
- | Stick-on weight removal tool

* Additional adaptors required.

7340L | WHEEL BALANCER



The HOFMANN geodyna 7340L is a professional touchscreen wheel balancer for cars, light trucks and motorcycles* - with 2D SAPE (Semi-Automatic Parameter Entry) for simple measurement of wheel offset, wheel diameter and Smart Sonar for automatic input of wheel width, a pinpoint laser indicator for weight placement.

Smart Sonar gives 30% time savings compared to manual data input. The 7340L also features easyALU technology for automatically selecting the weight balancing mode.

FEATURES

- 2D SAPE (Semi-Automatic Parameter Entry) and Smart Sonar: Measure wheel offset, wheel diameter and wheel width in one process
- Smart Sonar gives 30% time savings compared to manual data input and removes potential input error
- Hidden weight mode: Place adhesive weights behind spokes, giving you an appealing cosmetic finish
- VPM measuring system: Achieve accuracy and reliability by limiting discrepancies caused by changes in ambient temperature
- Optimisation program: During the optimisation procedure rim and tyre are adjusted relative to each other on the basis of different unbalance measurements
- QuickBal: Reduce measurement time by 30%
- Semi-automatic pre-selection of balancing mode via easyALU™
- Constant measuring speed: Get a measuring speed of 200 rpm
- User friendly interface with video display: The display, guides you through the balancing process step by step with useful images and videos
- Medium footprint: This larger unit provides benefits of improved ergonomics and the opportunity to manage wider tyres, allowing you to service small to top-end executive cars
- EasyWeight laser: Pinpoint the exact location for adhesive weight placement assisted by the pinpoint laser
- Stop in position: Get fast positioning of the wheel for balancing
- Cones of 42-77 mm, 72-99 mm and 96-116 mm diameter
- Universal drum plus drum cushion
- Universal weight pliers
- Calibration weight
- 4 x storage pegs
- Stick-on weight removal tool

* Additional adaptors required.



7340P | WHEEL BALANCER



The HOFMANN geodyna 7340P is a professional touchscreen wheel balancer for cars, light trucks and motorcycles* with 2D SAPE (Semi-Automatic Parameter Entry) for simple measurement of wheel offset, wheel diameter and Smart Sonar for automatic input of wheel width, a pinpoint laser indicator for weight placement, and patented power clamping.

Smart Sonar gives 30% time savings compared to manual data input. The 7340P also features easyALU technology for automatically selecting the weight balancing mode.

FEATURES

- | Power clamping: Clamps the wheel with a secure and consistent force, providing better handling when balancing
- | 2D SAPE (Semi-Automatic Parameter Entry) and Smart Sonar: Measure wheel offset, wheel diameter and wheel width in one process
- | Smart Sonar gives 30% time savings compared to manual data input and removes potential input error
- | quickBAL: Reduced cycle time by up to 30%
- | Hidden weight mode: Place adhesive weights behind spokes, giving you an appealing cosmetic finish
- | VPM measuring system: Achieve accuracy and reliability by limiting discrepancies caused by changes in ambient temperature
- | Optimisation program: During the optimisation procedure rim and tyre are adjusted relative to each other on the basis of different unbalance measurements
- | Semi-automatic pre-selection of balancing mode via easyALU™
- | Constant measuring speed: Get a measuring speed of 200 rpm
- | User friendly interface with video display: The display, guides you through the balancing process step by step with useful images and videos
- | Medium footprint: This larger unit provides benefits of improved ergonomics and the opportunity to manage wider tyres, allowing you to service small to top-end executive cars
- | EasyWeight laser: Pinpoint the exact location for adhesive weight placement
- | Stop in position: Get fast positioning of the wheel for balancing
- | Cones of 42-77 mm, 72-99 mm and 96-116 mm diameter
- | Universal drum plus drum cushion
- | Universal weight pliers
- | Calibration weight
- | 4 x storage pegs
- | Stick-on weight removal tool

* Additional adaptors required.

7600P | WHEEL BALANCER



The HOFMANN geodyna 7600P is a professional touchscreen wheel balancer for cars, light trucks and motorcycles* - with 2D SAPE (Semi-Automatic Parameter Entry) for simple measurement of wheel offset, wheel diameter and Smart Sonar for automatic input of wheel width, a pinpoint laser indicator for weight placement, and patented power clamping.

The 7600P also features a high intensity LED rim light to improve vision when placing weights, and a touchscreen monitor. The patented power clamping system clamps the wheel to the unit accurately and with a constant force, which aids the balancing operation.

FEATURES

- | Touchscreen interface: Easy to use graphical user interface
- | Power clamping: Clamps the wheel with a secure and consistent force, providing better handling when balancing
- | easyWEIGHT: Pinpoint indicator for fast and accurate adhesive weight location
- | Rim lighting: LED light system, improves rim cleaning and weight placement
- | Smart Sonar: Automatic non-contact wheel rim width measurement
- | 2D data entry: Semi-automatic input of rim diameter and offset via SAPE arm
- | easyALU: Balancer automatically selects the correct weight mode by positioning the SAPE arm
- | Split weight mode helps the technician conceal the weights behind the spokes, preserving the wheels visual presentation
- | Optimisation program: During the optimisation procedure rim and tyre are adjusted relative to each other on the basis of different unbalance measurements
- | quickBAL: Reduced cycle time by up to 30%
- | Stop in position and shaft lock: Wheel spin is stopped in the correct location for weight applying. Pedal holds wheel in position while you are working on the wheel
- | Cones of 42-77 mm, 72-99 mm and 96-116 mm diameter
- | Universal drum plus drum cushion
- | Universal weight pliers
- | Calibration weight
- | 4 x storage pegs
- | Stick-on weight removal tool



WHEEL BALANCER SPECIFICATIONS

CAR AND MOTORCYCLE BALANCERS



	7100	7200S	7340L	7600P
Adhesive weight position	Placement via SAPE arm	Placement via SAPE arm	EasyWeight via laser pointer	EasyWeight via laser pointer
Hidden weight mode	Yes	Yes	Yes	Yes
Optimisation program	Yes	Yes	Yes	Yes
Balancing program selection	Manual	Semi-automatic - easyALU	Semi-automatic - easyALU	Semi-automatic - easyALU
Spoke position detection	Manual	Manual	Manual	Manual
Wheel clamping	Quick nut	Quick nut	Quick nut	Power clamp
Cycle start	Automatic on closing hood	Automatic on closing hood	Automatic on closing hood	Automatic on closing hood
Wheel braking after measurement	Automatic	Automatic	Automatic	Automatic
Maximum wheel diameter	37.8 in	37.8 in	42 in	42 in
Rim width	1-20 in	1-20 in	1-20 in	1-20 in
Maximum wheel weight	70 kg	70 kg	70 kg	70 kg
Dimensions (WxDxH, with wheel guard open)	1005 x 1100 x 1711 mm	781 x 1012 x 1834 mm	877 x 1371 x 1661 mm	868 x 1313 x 1834 mm
Machine weight	70 kg	82 kg	90 kg	130 kg



EXCELLENCE IN WHEEL ALIGNMENT

JohnBean

V2280

CONNECTED ALIGNER



Get core wheel alignment functions quickly and easily with the John Bean V2280 system - ideal if you're an independent workshop. Its automatic tracking beam camera means less time spent on beam adjustment. And the V2280's uninterrupted process means you are never waiting for the system, with its intelligent workflows

guiding you through each task without any unnecessary steps. Online connectivity allows for automatic software and vehicle specification updates as well as web-based report management.

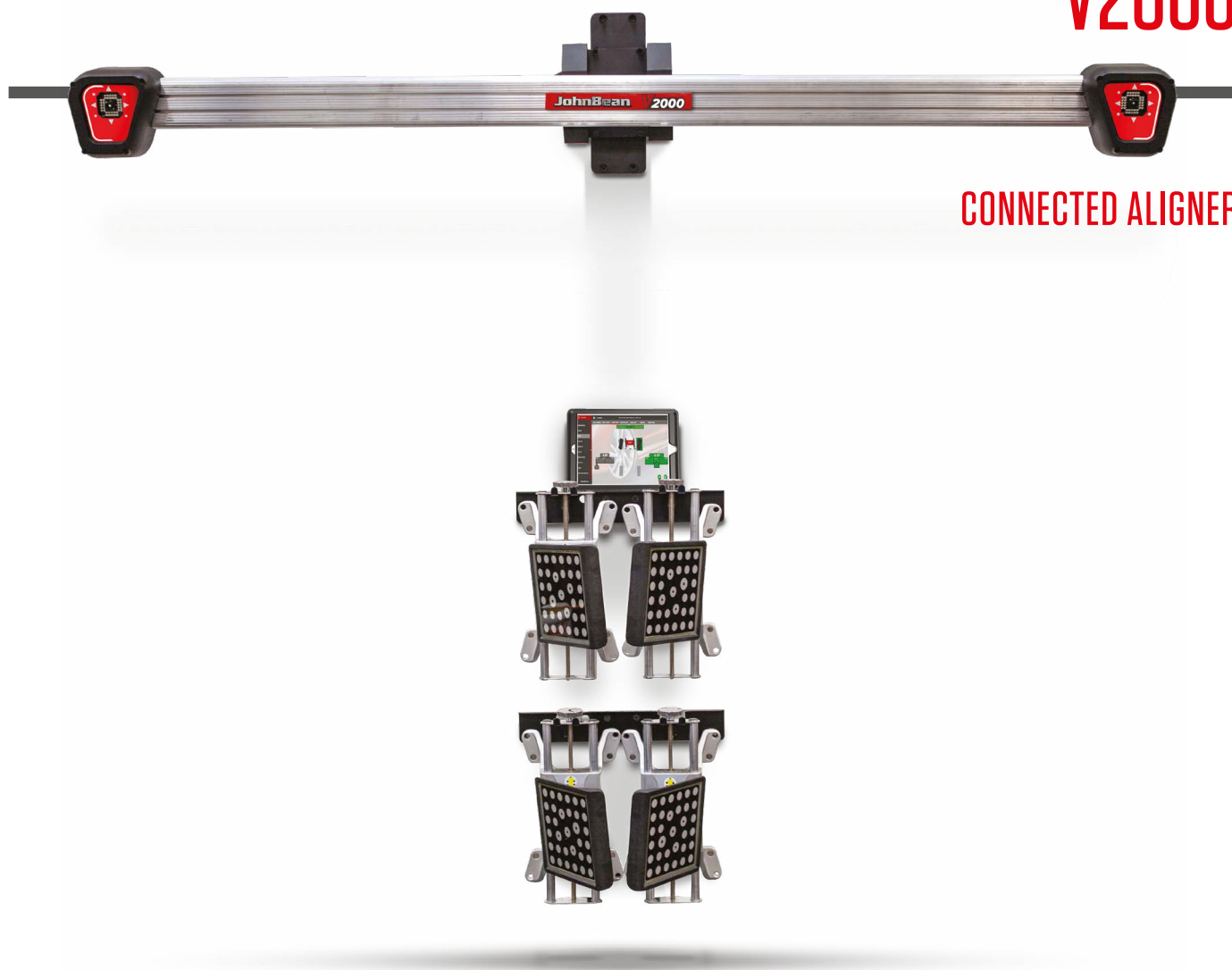
FEATURES

- | Patented VODI™ (Vehicle Orientation Directional Indicators) system - the cameras' lights guide the technician through the alignment
- | Automatic tracking camera beam: Camera height adjustment is motorised on the V2280 providing ergonomic and time saving advantages.
- | Measurement features: Advanced vehicle dimensions, cross diagonal and wheelbase measurement, wheels-off mode
- | Rolling Radius identifies mismatched tyre sizes
- | NextGen Software with intelligent predictive alignment flow
- | Alignment report: Print before and after colour reports for your customers, helping you communicate the benefits of wheel alignment simply and clearly
- | EZ-Toe for easy and convenient adjustment at maximum steering angle and eliminates the need for steering wheel holder.
- | Extensive database: Our comprehensive coverage of vehicle specifications and adjustment procedures provides comfort that you'll be able to meet your customer's request
- | Online connectivity automatically downloads specification and software updates and allows remote diagnostics for service*
- | AC100 Wheel clamps: fits rims up to 22in as standard and 26" with additional adaptors

*Internet connection required

V2000

CONNECTED ALIGNER



The John Bean V2000 is an affordable, high functioning wheel alignment system with a unique wall mounted design helps garages where space is at a premium to keep their wheel alignment business in house. It provides uncompromised ease of use and confidence from innovative, patented imaging technology. The John Bean

V2000 offers customers the full 3D imaging experience with fast-rolling run-out compensation, vehicle dimensions, and less dependent on a lift. Online connectivity allows for automatic software and vehicle specification updates as well as web-based report management.

FEATURES

- | Unique tablet configuration allows flexible operation, the measurement values are always in the technician's field of view, even when standing below the vehicle and doing the adjustment
- | Patented VODI™ (Vehicle Orientation Directional Indicators) system - the cameras' lights guide the technician through the alignment
- | Measurement features: vehicle dimensions, and wheelbase measurement
- | NextGen Software with intelligent predictive alignment flow
- | EZ-Toe for easy and convenient adjustment at any steering angle and eliminates the need for steering wheel holder.
- | Passive front and rear targets improve durability with no electronics to damage
- | Extensive database: Our comprehensive coverage of vehicle specifications and adjustment procedures provides comfort that you'll be able to meet your customer's request
- | Online connectivity automatically downloads specification and software updates and allows remote diagnostics for service*
- | AC100 Wheel clamps: fits rims up to 22" as standard and 26" with additional adaptors

V1200 ELITE

CONNECTED ALIGNER



With no moving parts, new alignment software that's easy to learn and use, and a robust, compact design, the V1200 Elite wheel aligner requires minimal space and none at all in the front of the lift.

All communication happens wirelessly so you never have to worry about beams and cables taking up valuable space in your working area.

The V1200 Elite is built to work flexibly with any alignment lift style and enhance performance in just about any workshop.

FEATURES

- | 3D vehicle measurement provides accurate and live alignment adjustment, full vehicle dimensions, and easy installation requiring no lift calibration
- | Cordless design with WiFi both for alignment components and for connection to the internet
- | Mobile control terminal with 22" monitor, printer and battery chargers for pod batteries
- | New easy rolling run-out compensation has short roll that stays on the turntable (only applies to precision turn plates)
- | New information preview provides critical data before work begins - time-saving, ergonomic and easy to understand
- | Live alignment error checking with compensate, warn, alert notification system to notify the user of errors as they happen without slowing the process
- | Visual indicators on the pods guide the technician through the measuring process
- | Live adjustment of camber, caster, and toe
- | Measurement of toe-out on turns and manual ride height measurement
- | EZ-Toe for easy and convenient adjustment at maximum steering angle and eliminates the need for steering wheel holder
- | Online connectivity automatically downloads specification and software updates and allows remote diagnostics for service*

*Internet connection required

WHEEL ALIGNER COMPARISON

V1200



V2000



V2280



Software activation	CONNECTED	CONNECTED	CONNECTED
Clamping system	AC700	AC100	AC100
Automatic lift tracking	N/A	NO	YES
Human error compensation	YES	YES	YES
OEM procedures	NO	NO	NO
Clamping range	AC700 clamps: 11 - 22 in as standard	AC100 clamps: 11 - 22 in as standard and 26 in with additional adaptors	AC100 clamps: 11 - 22 in as standard and 26 in with additional adaptors
Wheel base	2007 - 4572 mm	2007 - 4572 mm	2000 - 4570 mm
Display	22 in TFT	Tablet or Workstation	22 in TFT
Communication	WIFI	WIFI	Hardwired
Measuring system	3D	3D	3D
Power supply	230 VAC, 1 ph, 50 Hz	230 VAC, 1 ph, 50 Hz	2 x
WHEEL ALIGNMENT ACCESSORIES			
Ride Height TIP Target		■	■
Mobility kit		■	■
Wheels Off Hub Adaptor			■
Drive-on Camera			
Turntable kits	■	■	■

WHEN YOU BUY FROM SNAP-ON YOU GET ACCESS TO THE BEST AUTOMOTIVE EXPERTS IN THE BUSINESS

We endeavour to provide our customers with outstanding service. We maintain this by receiving survey feedback from hundreds of customers every month. From our expert technical sales team who can advise you about the best solutions for your garage, to our world-class aftercare service. Our entire team are committed to you achieving success and will provide you with the support to ensure that your doors are always open to customers.

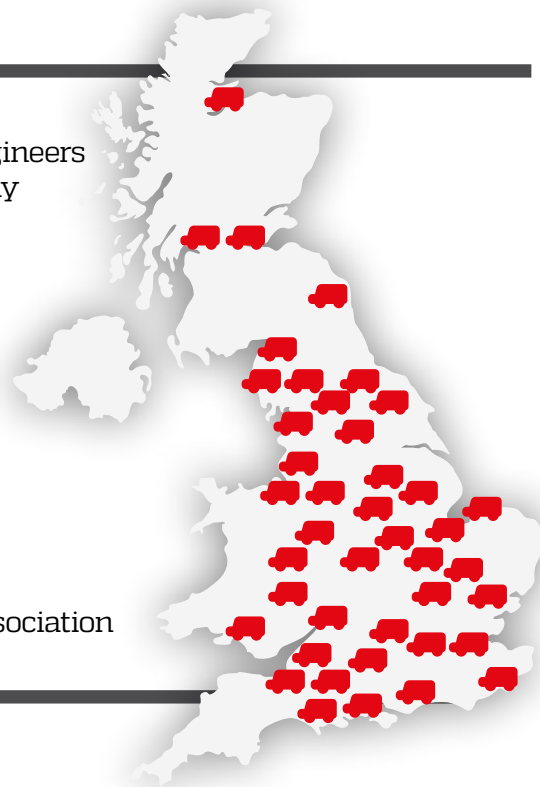
— OVER —
40

UKAS and GEA accredited Snap-on® Service engineers are nationwide, so qualified help is never far away

We are very pleased that Snap-on Diagnostics have all their sales and service associates GEA accredited, which gives garage owners and their vehicle technicians the confidence that they are dealing with a cutting-edge equipment company that they can depend on.

JULIAN WOODS 

Chief Executive Officer at Garage Equipment Association



**PEACE
OF MIND**

with managed routine maintenance and calibration programmes carried out via factory trained Snap-on engineers

OUR



call centre team have decades of experience within the automotive industry and are equipped to troubleshoot queries quickly

Your calibrations and maintenance appointments are scheduled by our expert UK customer care team - plus get live updates on service engineer arrival times



DEDICATED IN-HOUSE

installation engineers, customer care and
product support team



ARE YOU QUALIFIED TO SERVICE
ELECTRIC AND HYBRID VEHICLES?

WE CAN HELP!

Snap-on

EV AND HYBRID TRAINING

IMI Level 3 award in electric and hybrid
vehicle system repair and replacement

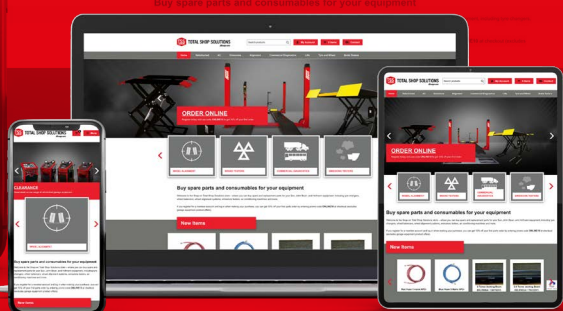
**SPEAK TO YOUR SALES REPRESENTATIVE
FOR MORE INFORMATION**



BUY SNAP-ON CONSUMABLES AND REFURB PRODUCTS AT
SNAPONCONSUMABLES.CO.UK

REGISTER NOW AND
SAVE 10%
OFF YOUR FIRST ORDER

ENTER
ONLINE10
AT THE
CHECKOUT*



MAINTAIN **YOUR INVESTMENT**

Maintain your investment with our Snap-on contracts. We provide a range of options to suit your equipment needs.

CALIBRATION CONTRACT

We offer competitive calibration contracts for many of our garage equipment products.



ROUTINE MAINTENANCE

Take out a maintenance contract with us to ensure your equipment continues to run efficiently and safely years after your purchase.



EXTENDED WARRANTY CONTRACTS

Snap-on is known for its quality but sometimes the worst can happen. Give yourself peace of mind and extend your warranty.



CONTRACT PACKAGES

Speak to us and find out how you can save money by taking out multiple Snap-on contracts on your equipment.



*(Excludes refurbished and ex-demo products)



TOTAL SHOP SOLUTIONS

Snap-on[®]

diagnostics.snapon.co.uk techsales.uk@snapon.com 01553 692422



HOFMANN[®] 

JohnBean.

Snap-on[®]