

MOT TESTING



SUN[®] AUTOMATED TESTING LANE

The SUN[®] ATL is a DVSA-approved automated test lane system for one-person operated MOT testing for class IV and VII vehicles (with optional class I and II upgrades available). At the heart of the SUN[®] ATL is the DGA6000 LINK, which integrates all of your MOT testing equipment with the DVSA's MOT Testing System (MTS) to reduce errors and make the entire process quicker and more efficient.

■ **Connected:** Use as your DVSA MOT Testing System (MTS) device. Meets the latest regulations for connected MOT testing to eliminate data entry errors and provide fast and accurate results

■ **User-friendly:** The workstation features intuitive software requiring minimal training, guiding technicians through the entire testing process simply and efficiently

■ **Efficiency:** Engineered from start to finish to make your MOT testing process fast and reliable. By seamlessly integrating all your MOT testing equipment, it streamlines training, setup, and daily processes, saving valuable time

■ **Dual revenue capabilities:** The four-post lift has integrated rear slip plates for wheel alignment procedures (wheel alignment equipment is an optional upgrade)

MEETS THE LATEST DVSA REGULATIONS FOR CONNECTED MOT TESTING

*Snap-on Finance available**

Q2 2024



TOTAL SHOP SOLUTIONS
Snap-on



HOFMANN[®]

JohnBean

SNAP-ON SERVICE

“ WE ARE VERY PLEASED THAT SNAP-ON® HAVE ALL THEIR SALES AND SERVICE ASSOCIATES GEA ACCREDITED, GIVING GARAGE OWNERS AND TECHNICIANS THE CONFIDENCE THEY ARE DEALING WITH A CUTTING-EDGE EQUIPMENT COMPANY THEY CAN DEPEND ON. ”

JULIAN WOODS



Chief Executive Officer at Garage Equipment Association

AFTERCARE SERVICE

We endeavour to provide our customers with outstanding service. We maintain this by receiving survey feedback from hundreds of customers every month. From our expert technical sales team who can advise you about the best solutions for your garage, to our worldclass aftercare service. Our entire team are committed to you achieving success and will provide you with the support to ensure that your doors are always open to customers.

- **GEA Accredited:** Over 40 Snap-on® Service engineers are GEA accredited and available nationwide, so qualified help is never far away
- **Peace of mind:** Routine maintenance and calibration programmes managed and carried out by factory trained Snap-on® engineers
- **Dedicated in-house:** Installation engineers available across the UK, our UK call centre team of customer care and product support specialists have decades of experience within the automotive industry and are equipped to assist you and troubleshoot queries quickly
- **Expert Customer Care:** Your calibrations and maintenance appointments are managed by our expert UK customer care team

WHEN YOU CHOOSE SNAP-ON® YOU GET ACCESS TO THE BEST AUTOMOTIVE EXPERTS IN THE BUSINESS



Snap-on Finance available*

**J D AUTOS
CHATHAM**

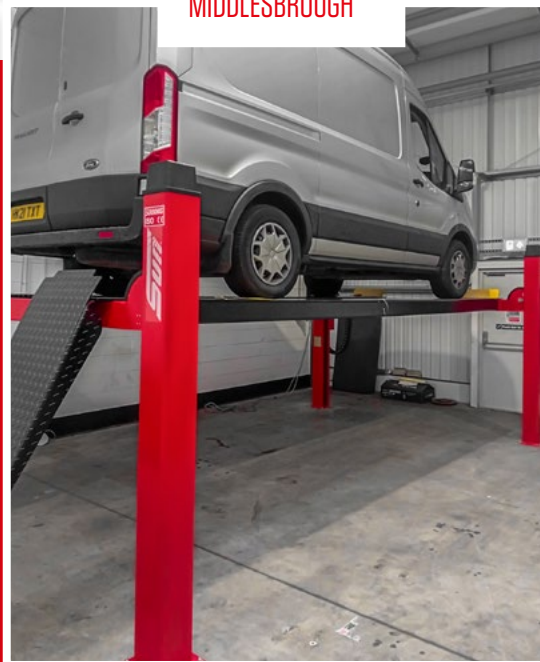


**DPF CLINIC NE LTD
MIDDLESBROUGH**

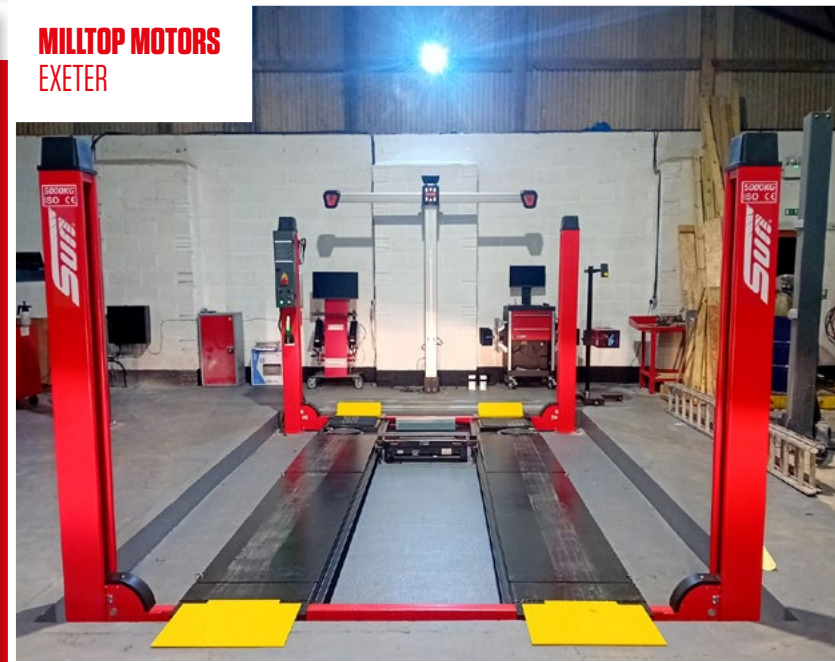
**MOTORCLINIC MOT AND
INSPECTION CENTRE
STOKE ON TRENT**



**FD ELMS LTD
DERBY**



**MILLTOP MOTORS
EXETER**



EMISSIONS

CUPRA

SNAP ON



SUN® DGA6000 LINK CONNECTED EMISSIONS ANALYSER

The SUN® DGA6000 LINK has been engineered from start to finish to make your MOT testing process fast and reliable. The system seamlessly integrates your MOT testing equipment with the DVSA's MOT Testing System (MTS) to reduce errors and make the entire process more efficient.

Intuitive software guides technicians through the entire testing process, saving valuable time in training, setup and ongoing workload, every day.

■ **Connected:** Approved for DVSA "connected" requirements: Connected MOT equipment is able to communicate directly with the DVSA's MOT Testing System (MTS) to improve testing accuracy and efficiency

■ **Ease of use:** The software interface guides technicians through testing procedures, plus the EOBD dongle makes oil and RPM measurements simple

■ **Wireless petrol and diesel modules:** The battery-powered petrol and diesel modules are wireless, eliminating the hassle of unwinding and coiling a long hose before and after each test. They are always heated and ready for measuring, improving testing efficiency

■ **ODB Health-check:** Automatically identifies emissions-related pending and active codes during testing, use this feature to recommend repairs to your customers before they become a problem

5-YEAR PEACE OF MIND DEALS AVAILABLE

ASK YOUR SNAP-ON REPRESENTATIVE FOR MORE INFORMATION

FLEXIBLE CONFIGURATIONS FOR EVERY WORKSPACE

*Snap-on Finance available**

AIR CON



SUN® KOOLKARE DUAL GAS 12

There is no need to take up valuable workshop space with two air-con machines when you can have one! The SUN® KoolKare Dual Gas 12 is a fully automatic air conditioning recovery and recycling machine which services both R134a and HFO1234yf gas vehicles.

The automatic system streamlines the servicing process and saves time by allowing technicians to start the process and step away to work on other jobs, making this an ideal choice for garages looking to optimise their efficiency.

■ Two gasses one machine:

You can service all AC systems using R134a or HFO1234yf gasses with a single machine, improving workshop efficiency and saving space

■ Refillable hermetically sealed bottles:

Eliminates moisture ingress and prevents oil and dye bottle contamination to guarantee a quality air conditioning service

■ Extensive database: A

comprehensive and fully updateable vehicle database ensures you can service every vehicle that comes into your workshop and eliminates manual data entry, helping to save time and improve productivity

■ **Integrated printer:** You can choose to print your test results directly with the integrated printer, providing tangible proof of the maintenance performed

■ Includes free starter kit containing:

- ✓ Oil
- ✓ Ultra-violet dye
- ✓ Ultra-violet light
- ✓ Thermometer
- ✓ Safety Goggles
- ✓ Safety Gloves

■ Optional accessories are also available:

- ✓ Nitrogen pressure testing kit
- ✓ AC Flushing kit
- ✓ KoolClean Anti-bacterial atomiser

WHY HAVE TWO MACHINES WHEN YOU ONLY NEED ONE.
OR **SINGLE GAS MACHINES ARE ALSO AVAILABLE: R134A OR HFO1234YF**



*Snap-on Finance available**



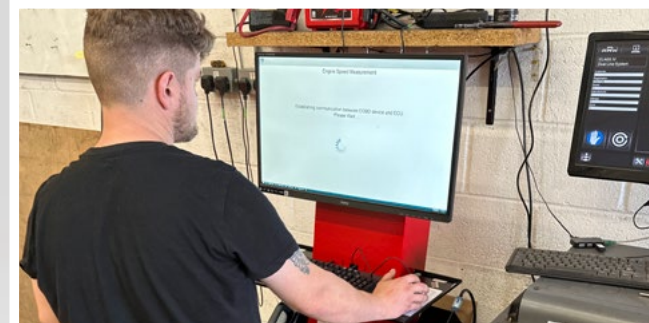
"I MADE MY PURCHASE WITH SNAP-ON® BECAUSE THE SALES REPRESENTATIVE KNEW WHAT HE WAS SELLING AND HOW IT WAS BETTER THAN WHAT WE ALREADY HAD. VERY HAPPY!!"

**SUN® DUAL GAS 12 AIR CONDITIONING MACHINE
RICHARD - ASHBY & MANN LIMITED**



"THE SALES REPRESENTATIVE KNEW EXACTLY WHAT HE WAS TALKING ABOUT AND OUR OTHER DEPOTS SANG HIS PRAISES TOO! THE DEMO WAS TOP DRAWER!"

**SUN® DGA6000 LINK EMISSIONS ANALYSER
BEN - STAGECOACH EAST MIDLANDS**



"EVERYTHING WENT PERFECTLY. THE SALES REPRESENTATIVE AND SERVICE ENGINEERS ARE REALLY GOOD AND VERY KNOWLEDGEABLE"

**SUN® DGA6000 LINK EMISSIONS ANALYSER
ANDREW - LOWER EARLEY MOTS LTD**

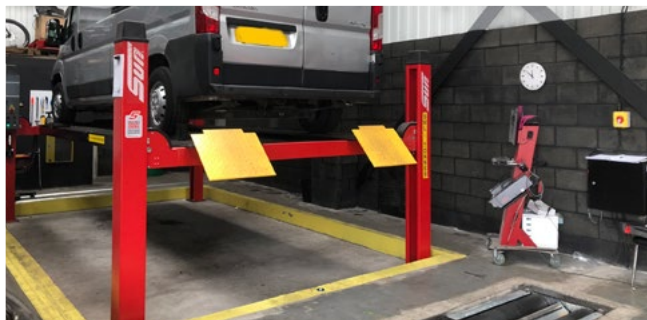


TESTIMONIALS



"TOP SERVICE!"

**SUN® DUAL GAS 12 AIR CONDITIONING MACHINE
KEVIN - IMPERIAL CAR COMPANY**



"CHRIS WAS THE MOST HELPFUL PERSON, FROM THE MOMENT HE STEPPED INTO MY GARAGE. HE ASSISTED ME IN GETTING MY MOT BAY SET UP"

**SUN® MOT BAY
JOZSEF - BULLET CAR REPAIRS LTD**



"CHRIS WAS VERY HELPFUL WHEN WE BOUGHT THE MOT BAY, WHEN WE NEEDED A NEW CAR LIFT WE DIDN'T THINK TWICE ABOUT BUYING FROM SNAP-ON®"

**HOFMANN® MOBILE MID-RISE SCISSOR LIFT
JOZSEF - BULLET CAR REPAIRS LTD**



"ANT WAS HELPFUL AND GOT INVOLVED WITH EACH STAGE TO MAKE SURE EVERYTHING WENT SMOOTHLY WITH GROUNDWORKS AND WITH THE DVSA WITHOUT US NEEDING TO REALLY GET INVOLVED. GROUNDWORKS TEAM WERE SUPERB AND VERY PROFESSIONAL"

**SUN® MOT BAY
STEPHEN - SHENTONS GARAGE LIMITED**



WHEEL ALIGNMENT



SUN® SSL-6400 ALIGNMENT SCISSOR LIFT

Wheel alignment services are a surefire way for independent garages to potentially boost revenue streams. The SUN® SSL-6400 Alignment Scissor Lift has a maximum lifting capacity of 4000kg and can lift between a range of 230mm and 1900mm. Ideal for use in general repair garages, bodyshops, tyre centres and wheel alignment specialists.

- **Easy access:** The lift's open front design makes it simple to access the alignment and calibration points as well as to see and access the display of the wheel alignment system
- **Suitable for a wide variety of vehicles:** Rated maximum lifting capacity of 4000kg within a range of 230mm and 1900mm, ideal for both cars and light commercial vehicles
- **Lighting System:** Alignment inspection and adjustment areas are illuminated by four independently switchable LED light strips that are included as standard
- **Safety systems include:** Pneumatic locks are part of the electro-hydraulic six-ram system for increased stability and safety between the platforms



*Snap-on Finance available**



JOHN BEAN® V2280

We've combined advanced wheel alignment technology with an easy-to-use interface, allowing garages to offer revenue-boosting services efficiently. The V2280 ensures fast and accurate wheel alignment without compromise. The fast compensation feature allows technicians to move through the alignment procedure quickly and accurately.

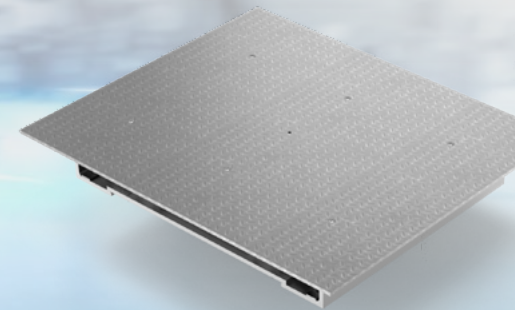
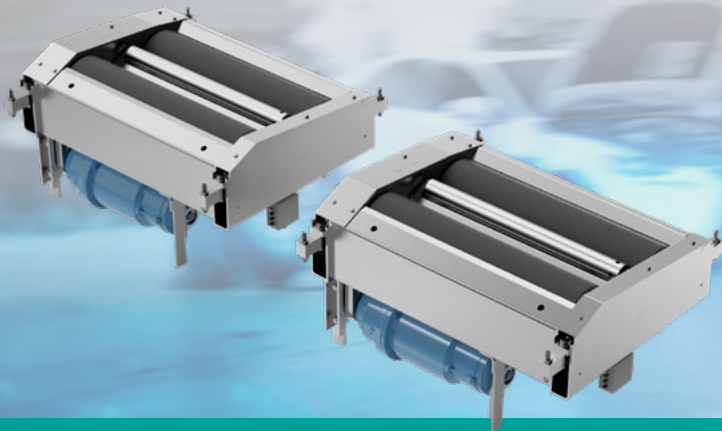
- **Intelligent and predictive alignment workflow:** The compensate, warn and alert system eliminates the guesswork and ensures a fast and reliable alignment process every time
- **Time-saving:** Automatic tracking camera beam moves up and down following the targets, which saves time making beam adjustments
- **Intuitive Software:** Simple instructional software was created in collaboration with technicians and focuses around core alignment functions
- **EZ-Toe:** For easy and convenient adjustment at any steering angle, and eliminates the need for steering wheel holder



*Snap-on Finance available**

COMMERCIAL ATF

HOFMANN® 



BR-20 20T COMMERCIAL ROLLER BRAKE TESTER

The HOFMANN® connected roller brake testers for vehicle classes IV, V, and VII HGV and PSV. Classes IV, V and VII integrate the Authorised Testing Facility (ATF) with the DVSA MOT Testing System (MTS) via the PC workstation.

- **Versatility:** The roller sets can be installed together in front of the pit or split and installed on the left and right sides of the pit, or standalone
- **Durability:** The steel brake rollers are coated with corundum and have a durable coating to prevent tyre wear during tests. An electromagnetic brake assists in driving off the roller and prevents wheel slippage
- **Ease of use:** The user-friendly software interface guides technicians through the entire testing process, enhancing workflow and saving time
- **Integration:** The roller brake tester can also take advantage of complete integration with the HOFMANN® geogas 6000 LINK emissions analyser to streamline your process and increase efficiency
- **Load Simulation:** An optional hydraulic lifting load simulation system for brake tests compliant with ISO 21069

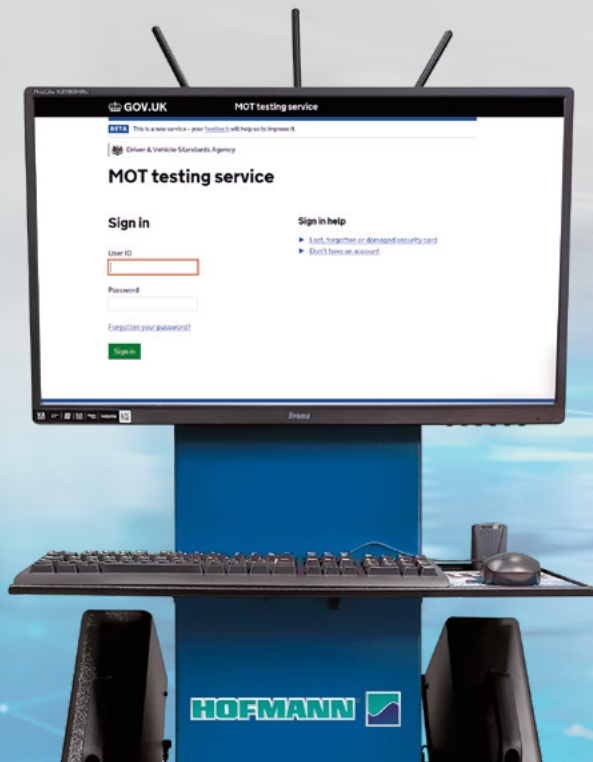
*Snap-on Finance available**

WEARTEST 4600 FA COMMERCIAL JOINT PLAY DETECTOR

The HOFMANN® Weartest 4600 FA Joint Play Detector, is the ultimate solution for assessing suspension and steering components in heavy goods vehicles (HGV) and public service vehicles (PSV) with axle loads of up to 20 tons.

- **Hydraulic Test Plates:** These hydraulic test plates offer remarkable versatility with a wide range of plate movement options, enabling both counter-direction movement (in four different ways) and same-direction movement (in eight different ways). Additionally, these plates seamlessly return to their home position automatically
- **Thorough Assessment:** Conduct thorough inspections on a variety of components including axle suspension, axle stub, wheel bearing, tie-rod ends, stabiliser, trolley pivot, twin-axle suspension, and trailer coupling device, enabling technicians to complete a full assessment of the vehicle's suspension with ease
- The system provides straightforward and convenient operation via a handheld radio-controlled test lamp, allowing technicians to easily select between automatic or manual test functions. The durable test lamp features a keypad reinforced with oil- and petro-resistant foil, ensuring longevity and resilience to the demands of a busy testing station

*Snap-on Finance available**



GEOGAS 6000 LINK CONNECTED EMISSIONS ANALYSER

The HOFMANN® geogas 6000 LINK is a DVSA-approved emissions analyser for vehicle classes III, IV, V, V L, and VII HGV AND PSV.

- **Connected:** Use as your DVSA MOT Testing System (MTS) device. Meets the latest regulations for connected MOT Testing, to provide fast and accurate results
- **Wireless petrol and diesel modules:** The battery-powered petrol and diesel modules are wireless, eliminating the hassle of unwinding and coiling a long hose before and after each test. They are always heated and ready for measurement, improving the testing process
- **Optional stack adapter probe** also available
- **Ease of use:** The software interface guides technicians through testing procedures, plus the EOBD dongle makes oil and RPM measurements simple
- **ODB Health-check:** Automatically identifies emissions-related pending and active codes during testing, use this feature to recommend repairs before they become a problem

HEADLIGHT BEAM TESTER

The HOFMANN® DVSA-approved Headlight Beam Tester is capable of meeting the demands of a busy testing station. Its compact footprint ensures minimal floor space is required, while the robust construction, combined with full adjustability, ensures ease of operation for technicians

- **Performance:** This fully adjustable unit features a digital lux meter for accurate measurements and a forward-facing dual laser system with a 30-second auto-off timer for efficiency. The headlight tester has a 520mm focal length and operates at a distance of four meters. Suitable for class IV and VII MOT assessments, and an optional unit is available for Class V testing of HGV/PSV vehicles
- The lens of the tool is able to precisely focus on a wide range of headlight types, from halogen, light emitting diodes (LED) and xenon/high-intensity discharge (HID), guaranteeing versatility and adaptability to various vehicle configurations
- **Class V and Track Extension:** For class V HGV/PSV assessments and extended track requirements, an optional unit is available, offering technicians the versatility and adaptability required for all testing scenarios

LIFTING



SUN® SSL-3000 FULL-HEIGHT SCISSOR LIFT

The SUN® SSL-3000 is a short sill car lift featuring a double scissor design, suitable for either recessed or surface mounted installations. It has a 3000 kg lifting capacity, featuring a four hydraulic ram setup to enhance safety and stability across platforms, alongside pneumatic safety locks.

■ **Space-Saving:** The SSL-3000 is available in a recess mount configuration, installed flush with the ground when not in use, minimising any potential obstruction. Perfect for workshops where floorspace is limited

*Surface mount configuration also available

■ **Efficiency:** Low-angled run-up ramps provide a smoother transition of vehicles onto the lift from the front or rear, making loading and unloading operations smoother and more efficient

■ **Safety systems include:** The pneumatic safety locking provides a fail-safe system with an audible safety alert on descent, hydraulic pressure overload protection system and a control unit that operates at 24V

■ **Power ratings:** The 2.2kW motor operates from a three-phase mains power supply

■ **Versatility:** With a full-height scissor lift technicians can choose the optimal height to position the vehicle, ensuring comfortable and efficient access to all areas for maintenance and repair tasks as required

FLEXIBILITY, CONVENIENCE AND IMPROVED WORKFLOW

*Snap-on Finance available**



SUN® 2-POST BASELESS LIFT

The SUN® SVL-HBL series of 2-post lifts are suited to workshops that need to maximise floorspace. Available in two lifting configurations;

- SVL43 HBL (4-tonne)
- SVL50 HBL (5-tonne)

They provide excellent access for mounting and removing batteries from electric and hybrid vehicles as well as for mounting and removing components on both cars and light commercial vehicles.

■ **Stability:** The SVL43 HBL (4-tonne) features four arms with a three-stage asymmetric configuration which gives a better centre of gravity on heavier EV's and front-wheel drive vehicles. The SVL50 HBL (5-tonne) features four lifting arms with a three-stage symmetric configuration which gives a better centre of gravity when working on light commercial vehicles

- **Symmetric posts:** Controls can be mounted on either post due to its symmetric design
- **Versatility:** With a pad height of 85mm, the SVL43 HBL's low profile arms are specifically engineered to elevate sports cars and vehicles with low skirts (SVL43 HBL only) The SVL series is supplied with lifting adaptors, with the SVL43 HBL model featuring 55mm adaptors, and the SVL50 HBL model comes complete with 100mm adaptors

*Snap-on Finance available**



SUN® 2-POST LIFT WITH BASEFRAME

The SUN® SVL-HB series of 2-post lifts with base frame, are suited to workshops with height restrictions. Available in two lifting configurations;

- SVL43 HB (4-tonne)
- SVL50 HB (5-tonne).

Suitable for lifting both cars and light commercial vehicles.

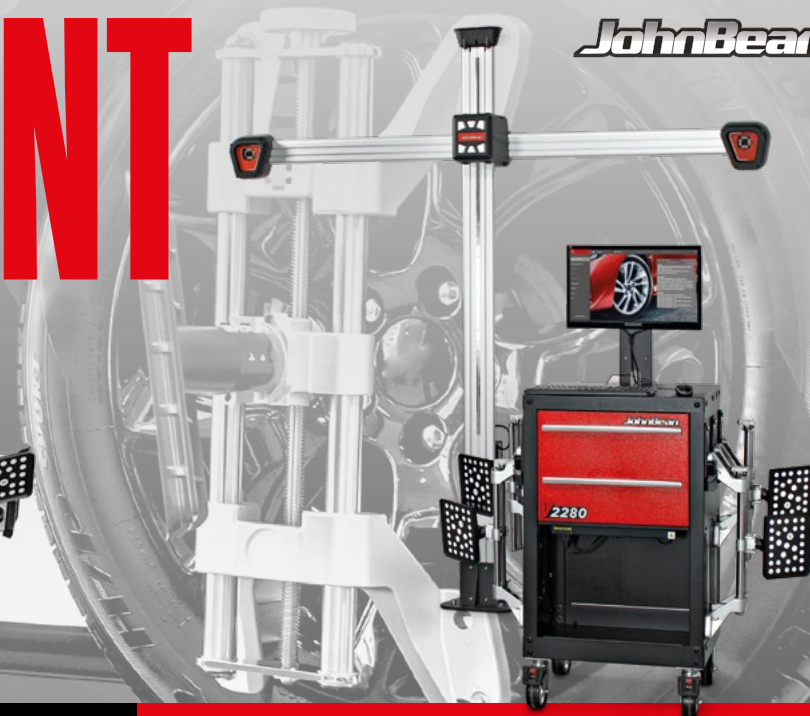
■ **Stability:** The SVL43 HB (4-tonne) features four lifting arms with a three-stage asymmetric configuration which gives a better centre of gravity when working on front-wheel drive vehicles
SVL50 HB (5-tonne) features four lifting arms with a three-stage symmetric configuration which gives a better centre of gravity when working on light commercial vehicles

■ **Versatility:** With a pad height 80 mm: The SVL43 HB's low profile arms are designed to lift sports vehicles and low-skirted vehicles (SVL43 HB only). SVL50 HB has a pad height of 95 mm
The SVL series is supplied with lifting adaptors, with the SVL43 HB model featuring 55mm lifting adaptors and SVL50 HB model comes complete with 100mm adaptors

*Snap-on Finance available**

WHEEL ALIGNMENT

JohnBean



JOHN BEAN® V3400

If you're looking for the ultimate in precision with a high degree of mobility and installation flexibility, look no further than the John Bean® V3400 wheel alignment machine. The V3400 utilises a drive-through design with fully wireless Bluetooth® connected camera towers for easy installation in various bay types, especially when paired with the optional mobility kit.

- **Drive-through Design:** The dual-tower design can accommodate larger-width vehicles by allowing the technician to position the towers apart at optimal distances. This also leaves space at the front of the vehicle to perform other tasks such as an ADAS recalibration
- **Automatic Camera Tracking:** Cameras move automatically up and down following the targets, eliminating manual adjustments of the camera beam

JOHN BEAN® V1200

Break the barriers of your alignment space with the John Bean® V1200 wheel aligner, featuring a compact mobile solution that allows flexibility to perform wheel alignments in a smaller area.

The V1200 comes with the same productivity-boosting software and features found in our cross-beam alignment systems in a smaller footprint.

- **Intelligent and predictive alignment workflow:** The compensate, warn and alert system eliminates the guesswork and ensures a fast and reliable alignment process every time
- **Accurate:** 3D vehicle measurement provides accurate and live alignment adjustment, full vehicle dimensions, and easy installation requiring no lift calibration

JOHN BEAN® V2280

We've combined advanced wheel alignment technology with an easy-to-use interface, allowing garages to offer revenue-boosting services efficiently. The V2280 ensures fast and accurate wheel alignment without compromise. Keep productivity high with our fast compensation feature that allows technicians to move through the alignment steps quickly and accurately.

- **Intelligent and predictive alignment workflow:** The compensate, warn and alert system eliminates the guesswork and ensures a fast and reliable alignment process every time
- **Time-saving:** Automatic tracking camera beam moves up and down following the targets, which saves time making beam adjustments

diagnostics.snapon.co.uk techsales.uk@snapon.com 01553 692422

Total Shop Solutions is a family of Snap-on® brands that brings together best-in-class automotive repair products from across the industry. From wheel balancers, wheel aligners and diagnostics, to brake testers, testers and automotive lifts. Total Shop Solutions brands offer a unique breadth of solutions to outfit any workshop from floor to ceiling. *Terms and conditions apply. All offers in this brochure end 30th June 2024. Subject to VAT rate and stock availability. Snap-on reserves the right to change, modify or cancel promotions any time without notice. If you do not want to receive future marketing communications from us please send an email to klmarketing@snapon.com.

*Snap-on Finance available**