

TRUCK DIAGNOSTICS SOFTWARE UPDATE INSTRUCTIONS



STP 602



To see this document on our website please click on the link
<https://www.snapon.com/diagnostics/UK/Diagnostics.htm>

Jaltest Update instructions

The aim of this process is to assist with the installation of the Jaltest update via USB stick, if at any point you require further assistance with any part of this process call our product support team on 0845 6014736.

1. Connect mains power to the Tablet PC, and using a USB cable connect the PC Link box to the Tablet PC as shown in the photo's below:

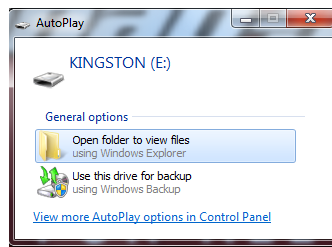


Note: The unit must be powered via the mains supply and uninterrupted during the update process. The update will take around 3 hours to complete.

2. Turn on the Tablet PC, and once booted up insert the supplied USB update stick update into the spare USB port.



3. The following will be displayed:



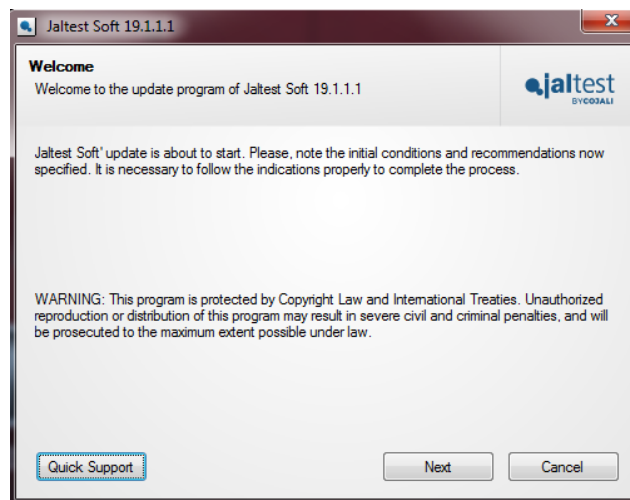
4. Select open folder to view the files; the following shows an example of the files that are contained on the update stick that are displayed.

Name	Date modified	Type
19_1_1_1_JalTestSoft_Setup_EN	19/02/2019 15:51	File folder

5. Double click on JaltestSoft_Setup, then select 19.1_JaltestSoft_Install.

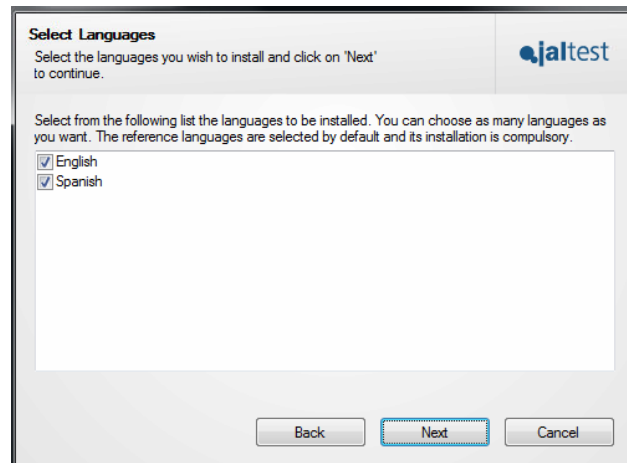
Name	Date modified	Type	Size
19_1_1_1_JalTestSoft_F1F	19/02/2019 15:51	File	757,398 KB
19_1_1_1_JalTestSoft_F2F	19/02/2019 15:51	File	753,632 KB
19_1_1_1_JalTestSoft_Install	19/02/2019 15:50	Application	1,590,017 KB

6. Initializing will be displayed for a few seconds. This will be followed by a short delay at which point the following window will be displayed:



Select "Next".

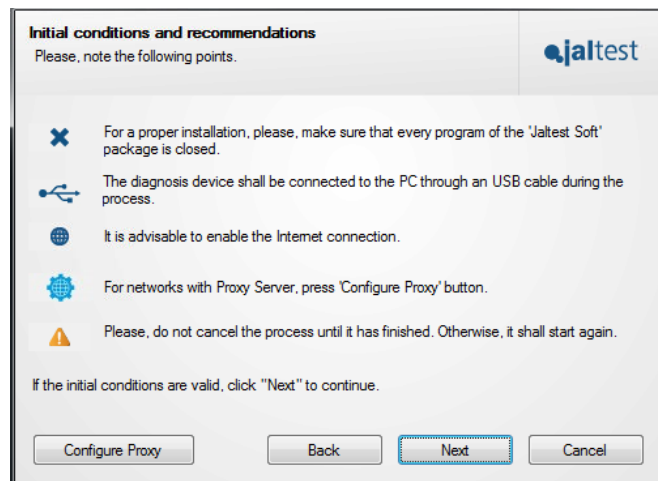
7. The following will be displayed: please select Next



8. **Ensure that the Jaltest link remains connected via the USB cable at all times; do not cancel the process until it has finished** and if possible please connect the tablet to the internet, this will greatly simplify the licensing and software registration process later. Click “Next”.

Note: If the License agreement screen is displayed select “I Agree” and click “Next”.

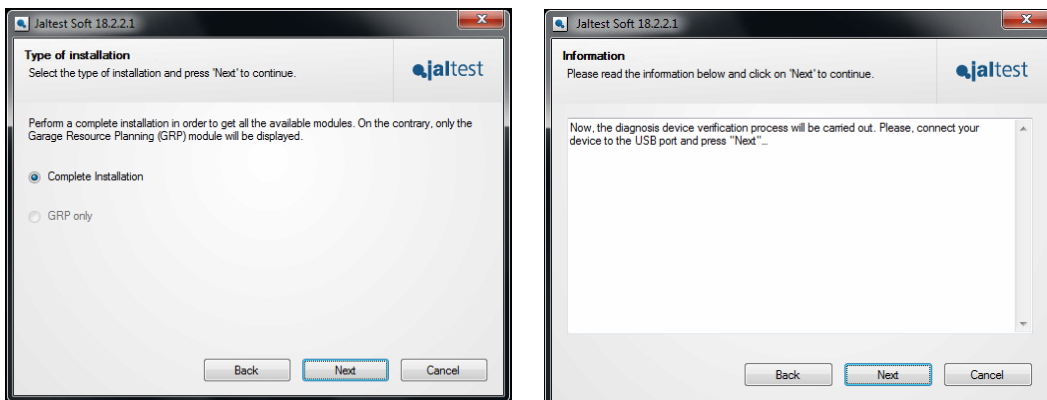
9. The following will be displayed:



Select “Next”.

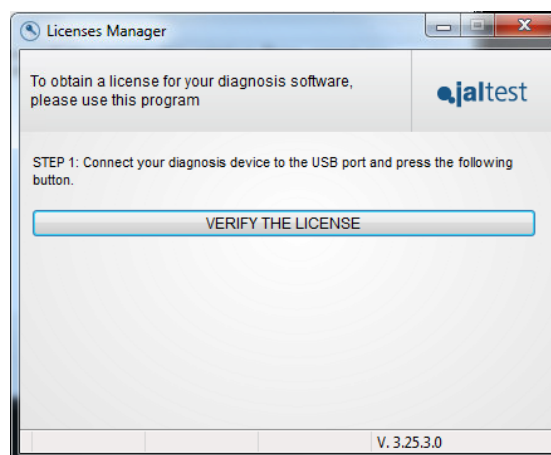
Note: If the “Open the Installation Manual” window is displayed click “Next” then the “Installation Folder” window will be displayed, click “Next” the “Shortcut Folder” window will be displayed click “Next” and go to step 11.

10. The following will be displayed: please select Next



Select "Next".

11. Please select verify license:



Please select if you are a Jaltest user or create an account using your email address. If you completed the 18.2 update you will now have a email address and a password that you created, please select I am a Jaltest user and type in your Email address and Password.



12. The following will be displayed:

Please fill in required information.

Licenses Manager

Fill out the information required at every step and register as new Jaltest user.

Step 1: Company/society information

* Company name: COJALI, S.L. * VAT No.: b13210489 * Type of business: Multibrand workshop

* Address: AVENIDA DE LA INDUSTRIA * City: CAMPO DE CRIPTANA * Types of vehicles: ☒ Commercial vehicle, ☐ Agricultural vehicles, ☐ Vessels, ☐ Off-highway vehicle, ☐ Other types of vehicle

* Province: CIUDAD REAL * Country: SPAIN * Specialties: ☒ Electricity, ☐ Mechanics, ☐ Tyres, ☐ Chassis, ☐ Diagnosis, ☐ Semi-trailer, ☐ Quick mechanics

* Zip code: 13610 * E-Mail: atencionalcliente@cojali.com

* Phone number: 34 926589038

* Compulsory field

Next

13. The following will be displayed, please complete

Licenses Manager

Fill out the information required at every step and register as new Jaltest user.

Step 2: Contact person information

* Full name: Ana Muñoz * Position: Administrative * Phone number: 34 926589038

Step 3: Identification of user account (required data to identify yourself as Jaltest user)

* Username (email address): atencionalcliente@cojali.com

* Password: * Repeat password: Password verified

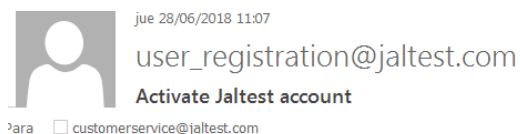
* Click on the following button to verify your diagnosis device: VERIFY THE DEVICE

REGISTER USER

Back

* Compulsory field

Once email received please click on link and confirm.



Dear Jaltest Customer Service,

We are sending you this email to complete the activation process of your account. The process is very easy, you just have to click on the following link.

www.jaltest.com/en/register/confirm-user/UvqBqjBz9eJ2dRAsugBOGcbIKdYovInlGeBX736T7Ek/

We would like to take this opportunity to thank you for trusting Jaltest.

Diagnostics department

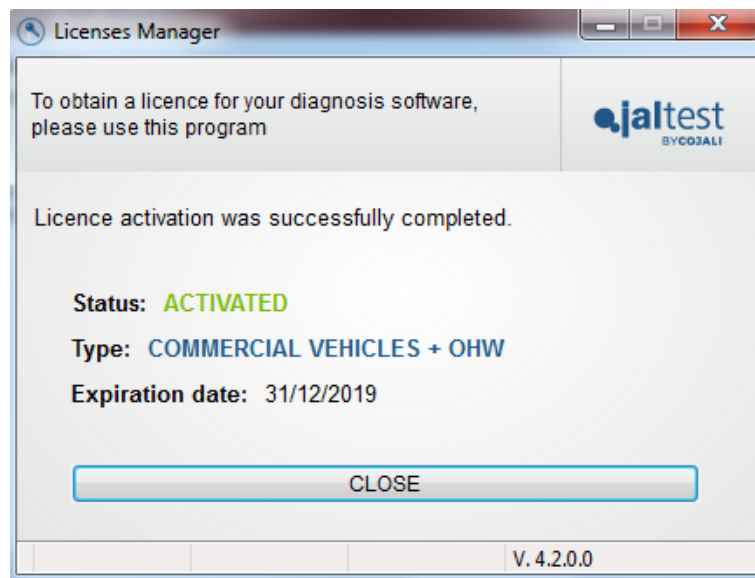
COJALI, S. L.
Avenida de la Industria s/n
13610 Campo de Criptana
Ciudad Real
Spain

Tel: (+34) 926 589670

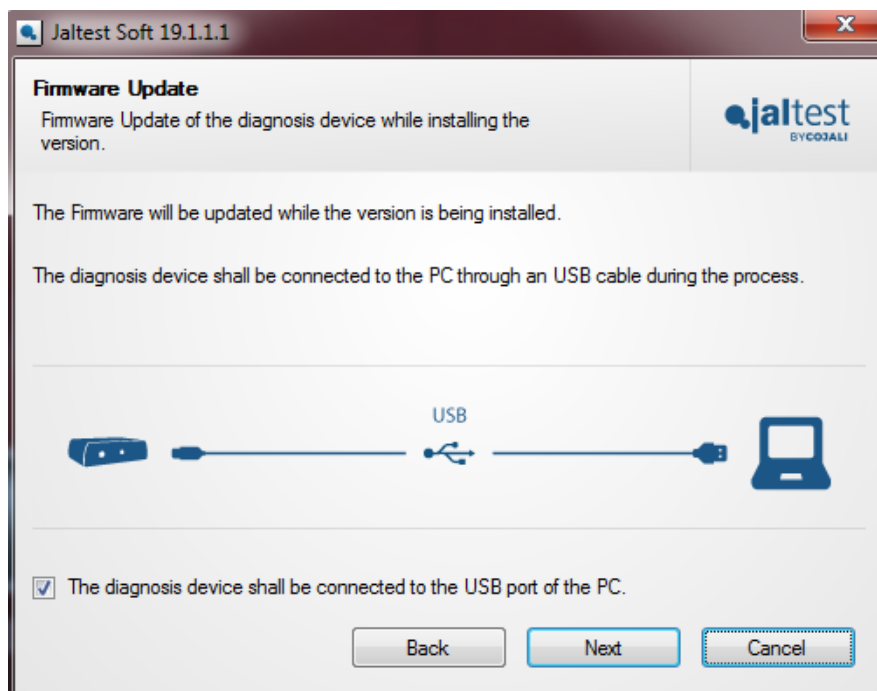
Fax: (+34) 926 589171

Mail:

14. If the tablet is successfully connected to the internet and the license is valid the following will be displayed depending on what package you have purchased you may see AGV and OHW, click close. **If the license activation was not successful then refer to appendix 1.**

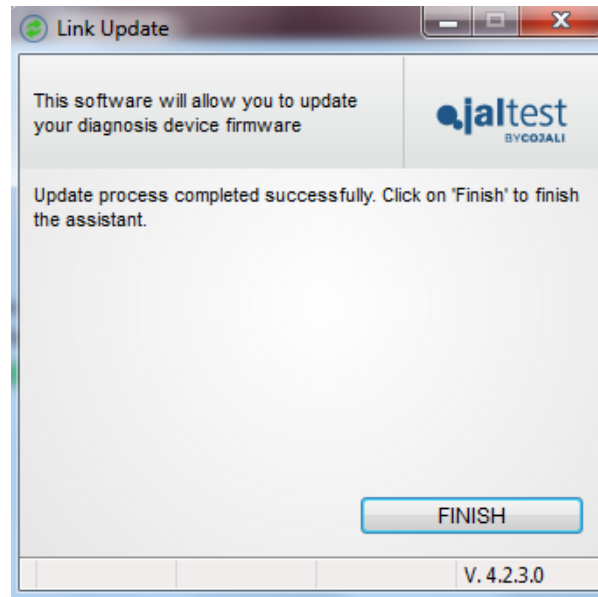


15. The following will be displayed:



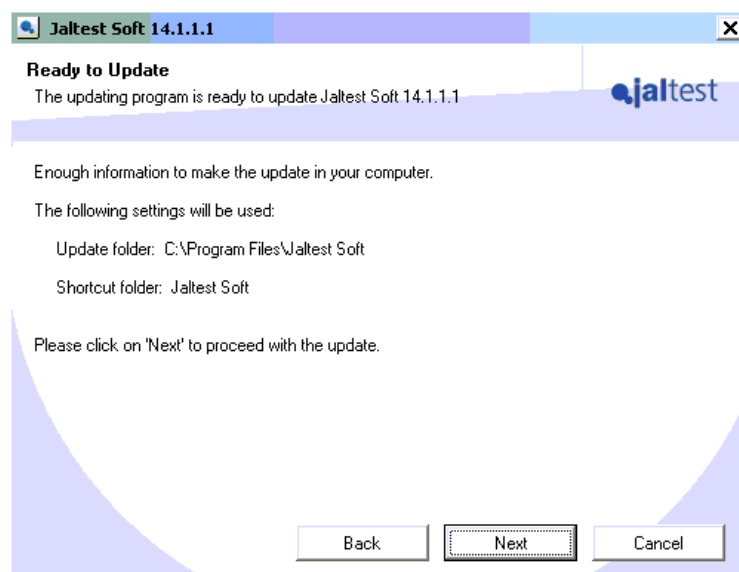
Click "Verify the Device". "Device verified" will be displayed. Click "Press here to update the device". The firmware update will now begin; this stage takes approximately 30 minutes on the Jaltest Pad. This time will increase on older tablets.

17. When complete the following will be displayed.



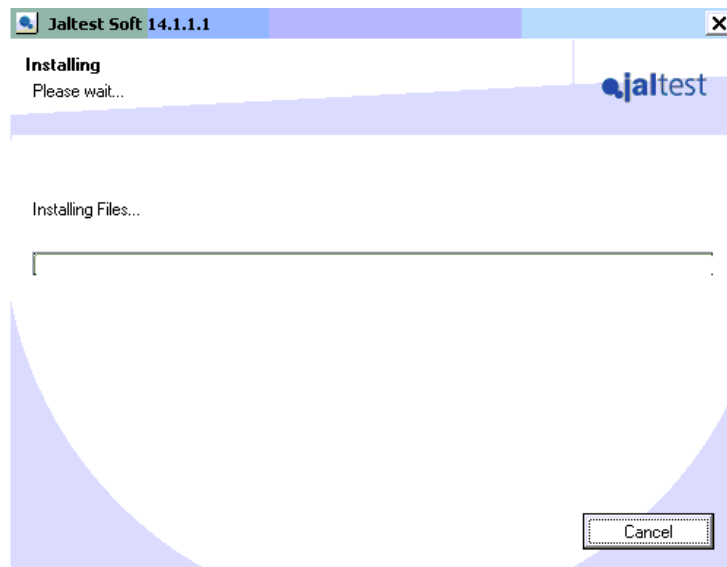
Click "Finish".

18. The following will be displayed:



Click "Next".

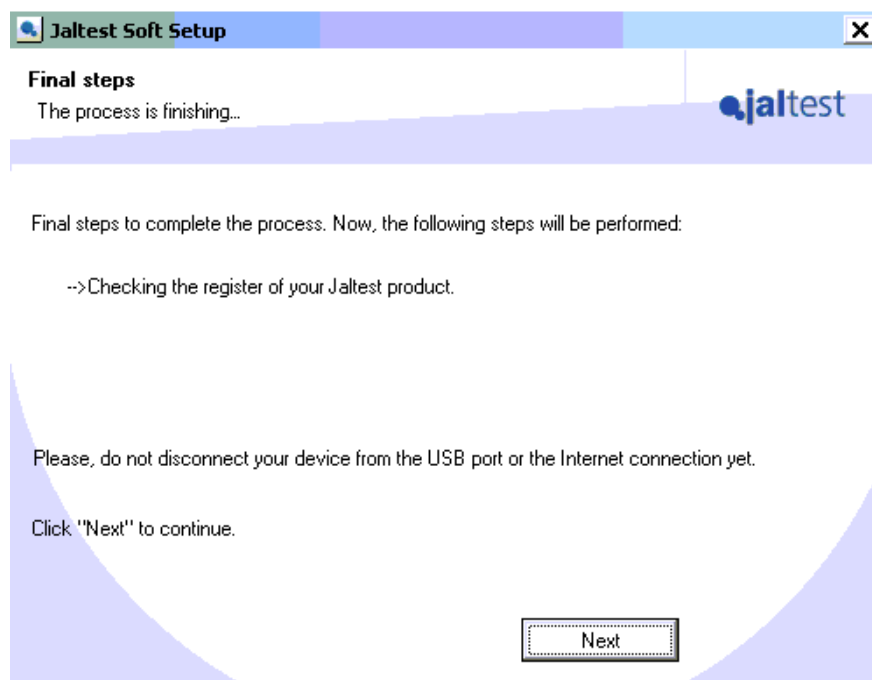
19. The following will be displayed:



This stage will take approximately 1 ½ to 2 hours on the Jaltest Pad to complete.

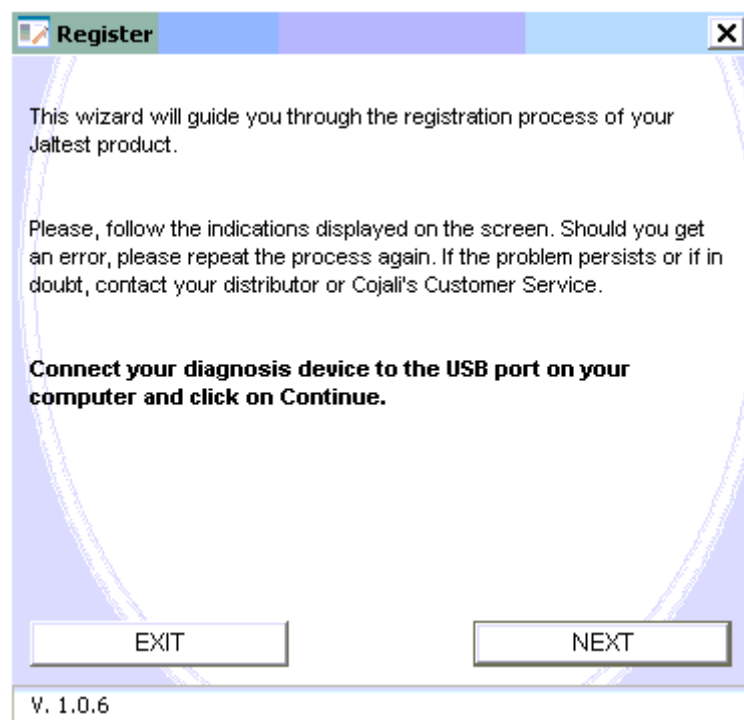
Note: If the "Favourite Brands" window is displayed select "do not use at this time" and click "Next".

20. The following will be displayed:



Click "Next".

21. Open the Jaltest Soft, the following will be displayed:



Select "Next".

22. If the Jaltest Pad unit is connected to the internet the following will be displayed:



Note: If the Jaltest Pad is not connected to the internet then a code will be displayed which you will need to supply to our product support team (0845 6014736) who can obtain a registration code for your unit, do not navigate away from the registration page whilst waiting for the code.

Click "Exit".

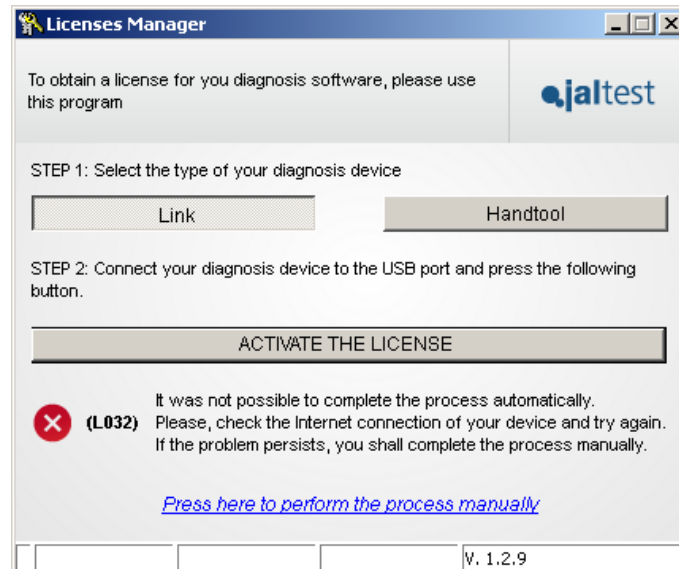
This completes the installation of the Jaltest update. You can now remove the update stick and close all windows that may be open. This update does not require a new Expert mode Pin.

Note: Included on the update stick is the applications list and Innovations documents for your reference.

If you have any problems with the update process please call our Product Support Team on 0845 6014736.

Appendix 1

If it is not possible to connect the tablet to the internet then the following will be displayed when activating the License:

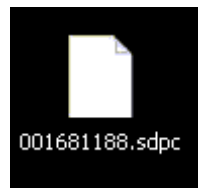


1. Click "Press here to perform the process manually".

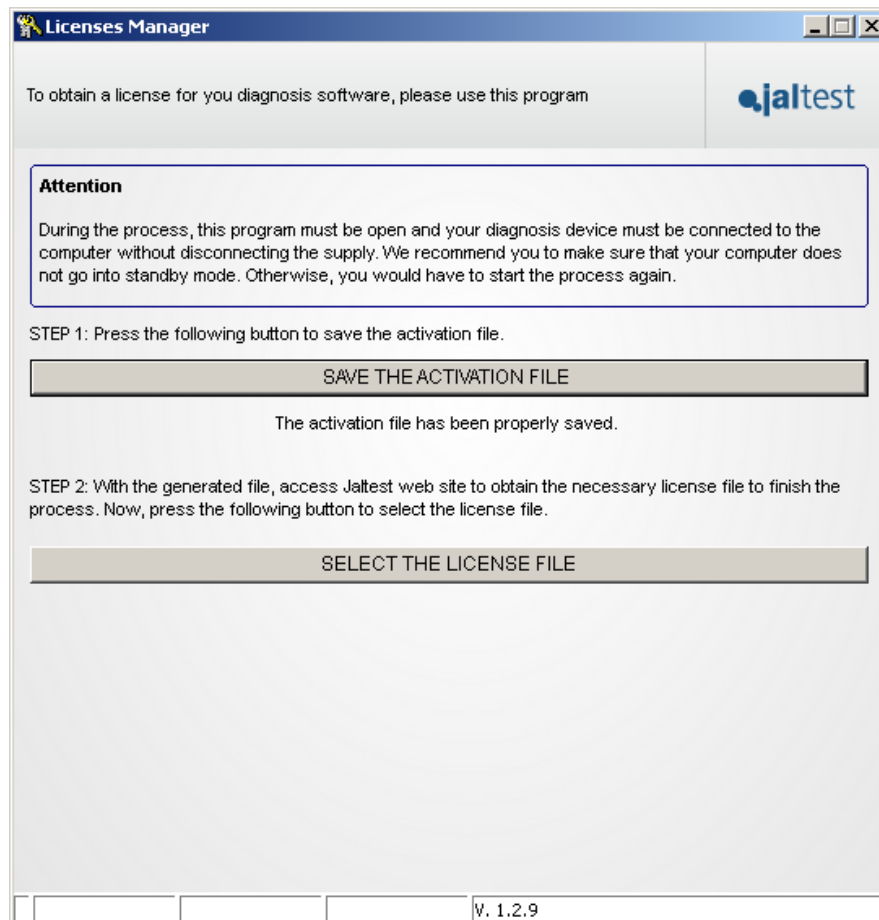
The following will be displayed:



Select "Save the Activation File". A pop up window will appear and you can select any location to save the file to, i.e. desktop, as it will be easy to find the file. The file saved will have the extension .sdpc and will look like the following:

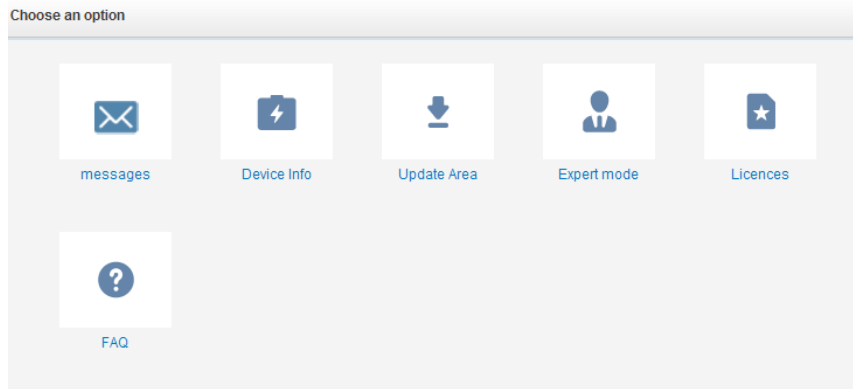


2. The following will be displayed:

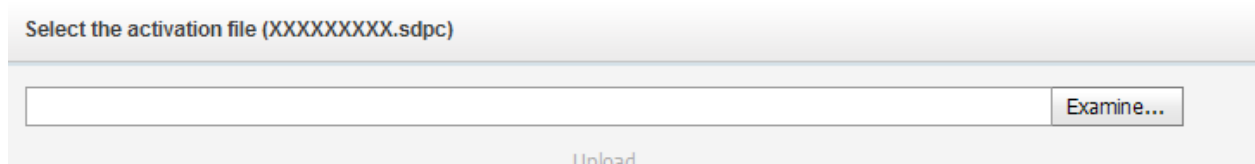


Do not close this window!

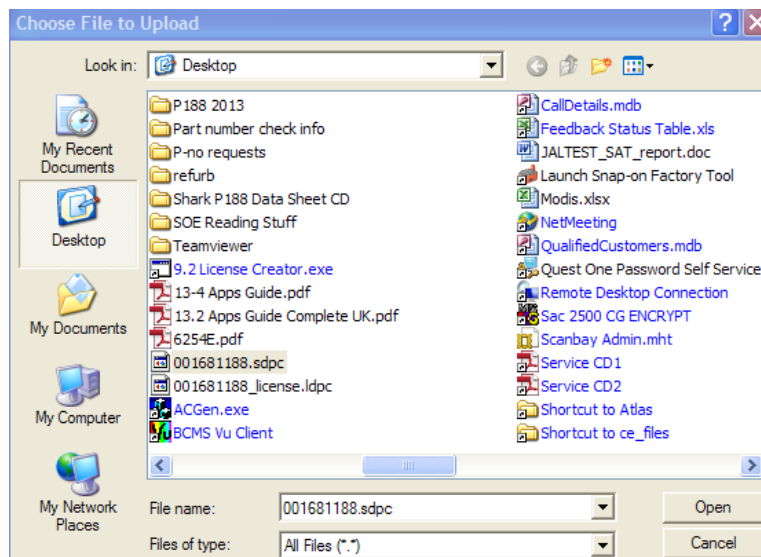
3. The file saved in step 1 now needs to be transferred to a PC with an internet connection, this can be done using the update stick provided, copy and paste the file to the update stick, then insert the update stick into a PC with an internet connection.
4. Open a web page on the PC and navigate to www.jaltest.com and click on clients. Using your log in details (located within the paperwork supplied with the unit or you can call our product support team on 0845 6066512 to obtain your login details) log in to the Jaltest Clients page.
5. Select "Licenses".



6. Select Examine

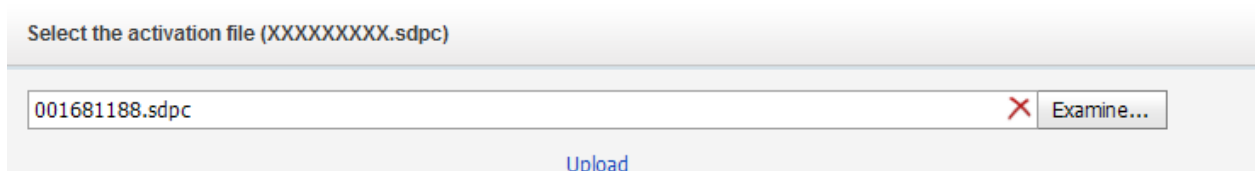


7. Navigate to the .sdpc file previously saved and transferred to the update stick.

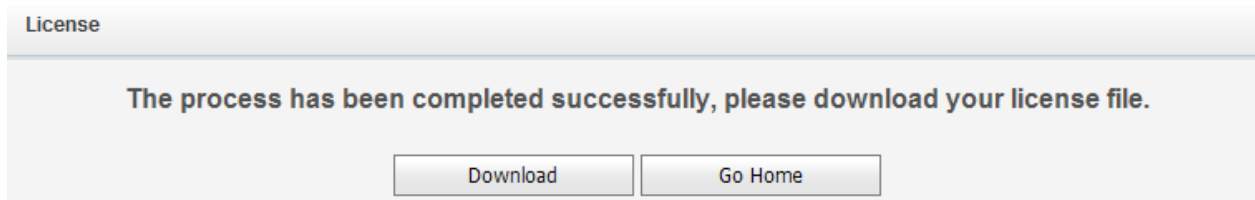


Click "Open".

8. Now click "Upload" as shown below:

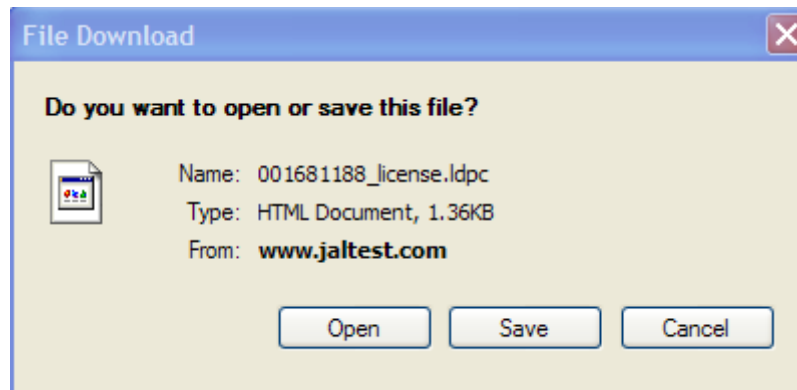


9. The following will be displayed.



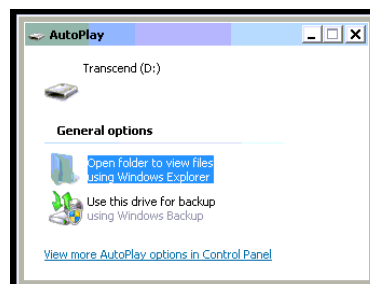
Select Download

10. The following will be displayed:



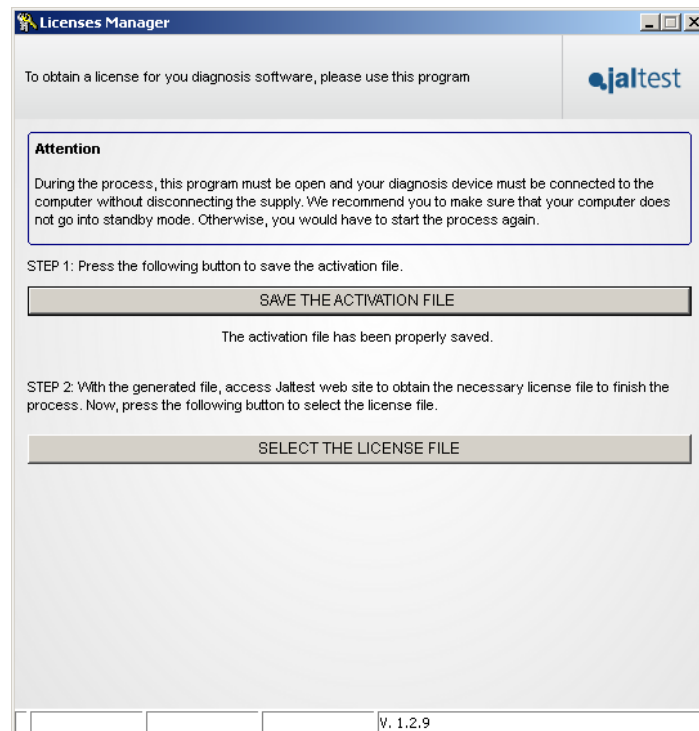
Select "Save" and save the file to the update stick in the same location as the .sdpc file uploaded in stage 6.

11. The update stick can now be removed from the PC and can be inserted back into the Jaltest Pad. The following will be displayed:

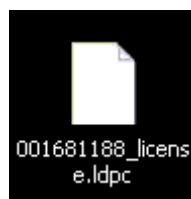


This window can be closed using the X in the top right hand corner.

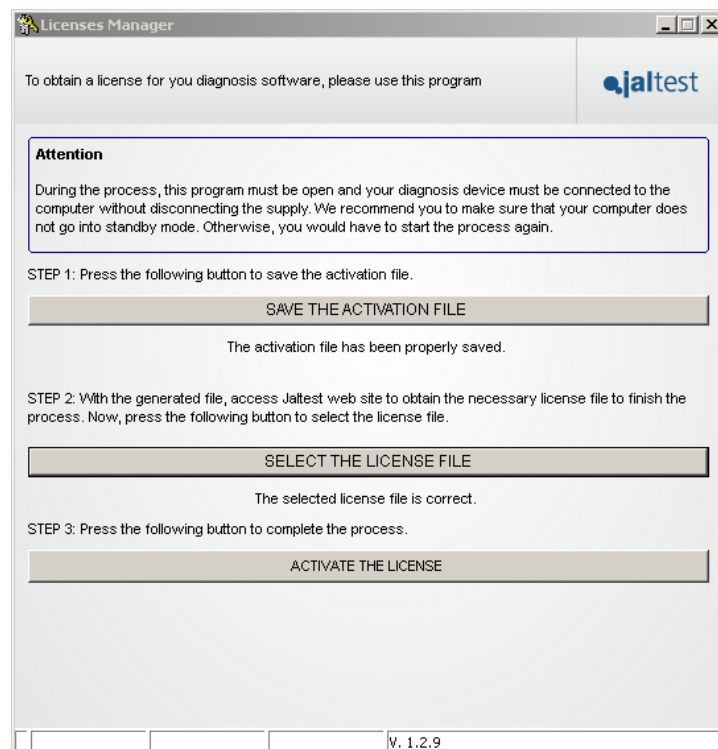
12. The following window will be still displayed from earlier:



Select "Select The License File". Navigate to the downloaded file which will be a .ldpc file and click "open". The file will look like the following:

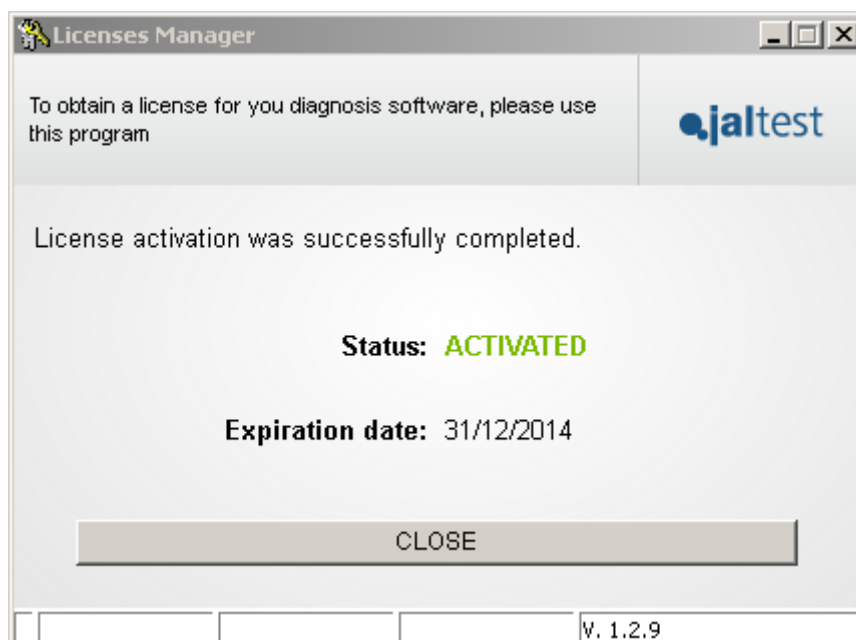


13. The following will be displayed:



Select "Activate The License".

14. The following will be displayed:



Select "Close".

15. Carry on from step 15 in the update procedure.