



MODIS™ Edge and SOLUS Edge™ Code Scan and Vehicle System Report

Selecting **Code Scan** starts an active scan of vehicle control modules. The scan results are configured into a Vehicle System Report that is printable using ALTUS or ShopStream Connect™ (SSC). Using ALTUS, the report can also be shared via e-mail, text and social media.

Setting Up the Vehicle System Report

To get started, use **ShopStream Connect**¹ to customize the Vehicle System Report to include your shop name, address, phone number as well as set-up a date and time stamp.

ShopStream Connect Setup and Connection

1. Download and install the ShopStream Connect (SSC) software on your PC.
2. After SSC is installed, connect the diagnostic tool to the PC using the supplied USB cable.
3. From the diagnostic tool, select **Tools** from the Home screen, then select **Connect-to-PC**.
4. If not automatically launched, open the SSC application on your PC.
5. Double-click the applicable drive from the file directory (leftside) as represented by the diagnostic tool name to open the list of saved files (**Figure 1**).

Adding Your Shop Information to the Report

You can add your shop information to the report header, and set a timestamp to print:

1. From SSC, select **Tools > Options > Edit Shop Info** (**Figure 2**).
The **Shop Info** dialog box opens (**Figure 3**) allowing you to enter the name address, and phone number for your shop. This information is included as a header on the report.
A preview panel at the bottom of the box shows how the information will appear on a print out (**Figure 3**).
2. Check the **“Use Shop Info in Printout Header”** box to show the Shop Info in the printout (**Figure 3**).
3. Check the **“Use timestamp in Vehicle System Report”** box to show the time the vehicle was scanned in the printout (**Figure 3**).
4. When you are finished editing, select **Save** (**Figure 3**) to save the information and close the dialog box.

Now you are set to begin creating Vehicle System Reports.

¹ ShopStream Connect is available free online at: <http://diagnostics.snapon.co.uk/ssc>
The ShopStream Connect User Manual is available online at:
<http://diagnostics.snapon.co.uk/usermanuals>

Figure 1

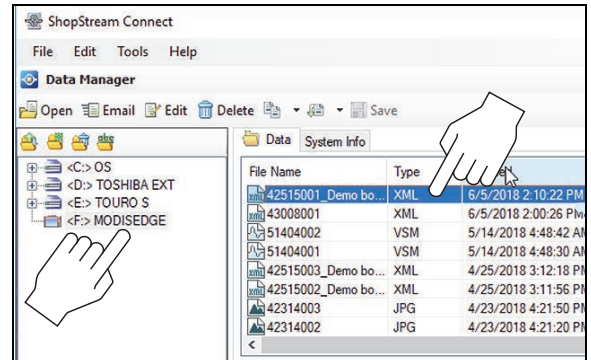


Figure 2

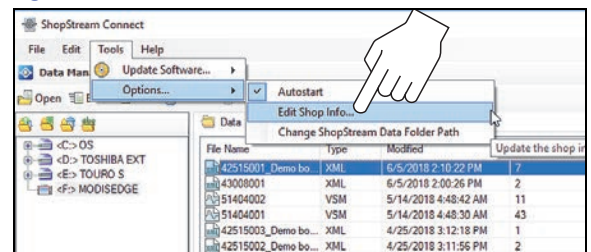
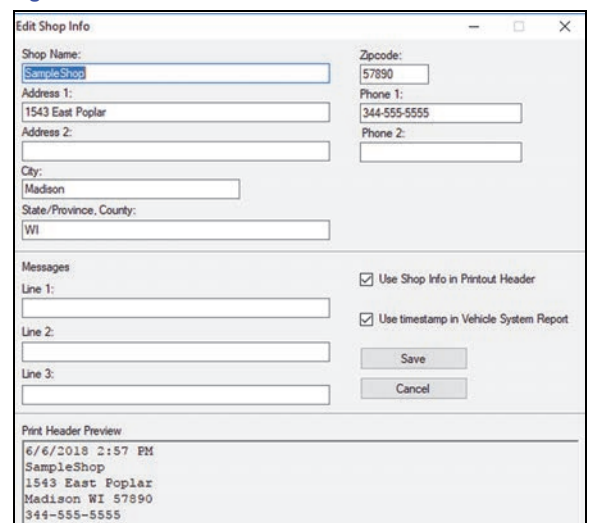


Figure 3



Snap-on
PRE/POST

**SCAN VEHICLE
SYSTEM REPORTS**

FIND OUT MORE

Using Code Scan to Scan Vehicle Systems²

From your diagnostic tool, once you have connected and identified a vehicle through Scanner, select **Code Scan** (Figure 4) from the Vehicle System menu to start an active scan of vehicle control modules.

While scanning, the total number of systems analyzed is actively displayed at the top of the screen (Figure 5).

After scanning is complete, the report is automatically saved, and can be viewed on the diagnostic tool:

1. Select **Previous Vehicles and Data** from the Home screen.
2. Select **View Saved Data**.
3. Select the code scan report file from the list to view the file (Figure 6).

Note: When a Vehicle System Report is saved, it is also automatically uploaded to ALTUSdrive.com (Wi-Fi connection and registration required). To print the report using ALTUS, see **"Printing From ALTUS"** on the next page.

For more information about Code Scan, refer to your diagnostic tool user manual at: diagnostics.snapon.co.uk/usermanuals

Editing the Report

After the report is generated, you can edit the VIN, License Plate, and Odometer fields, as well as add notes to the report, using SSC.

1. From SSC, open the Vehicle System Report .XML file to be edited.
 2. Click in the editable fields as shown in (Figure 7) to change the values or add notes.
- Check the **"Add the notes to the printed copy"** box to show the notes in the printout (Figure 7).

Printing the Report from ShopStream Connect

1. Double-click the applicable .XML file from the list to open the file (Figure 1).
2. From the report viewer, selecting **Print** (Figure 8) opens the Windows print dialog window (Figure 9). Select your printer from the list, then select **Print** to print the report.

² The Code Scan function is dependent upon the vehicle. Not all vehicles may support this function.

Figure 4

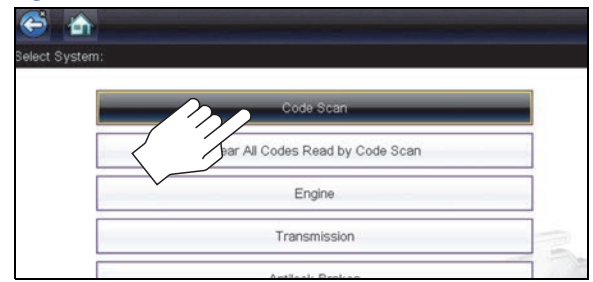


Figure 5

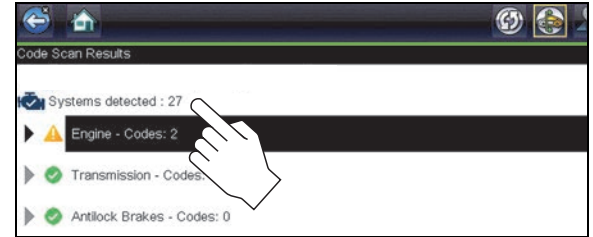


Figure 6

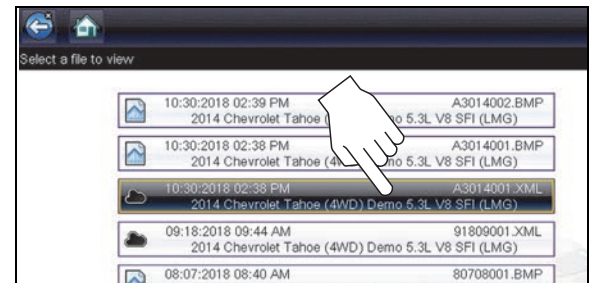


Figure 7

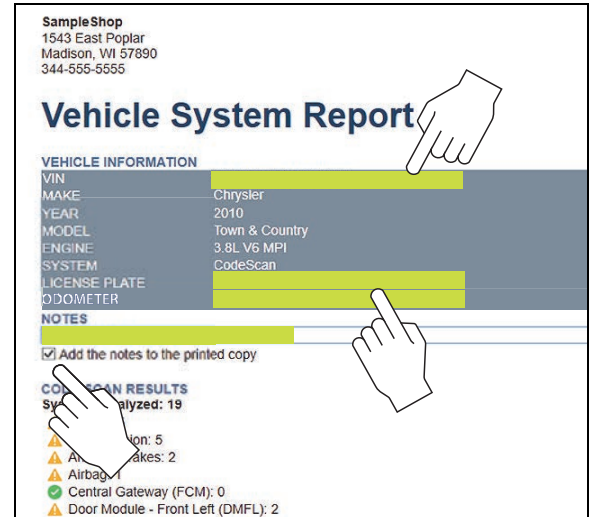
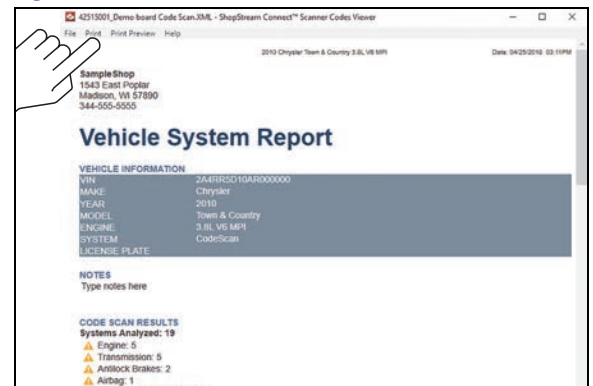


Figure 8



Printing the Report from ALTUS³

Notes:

- If you need your shop contact information displayed on the report, you must use ShopStream Connect to setup the report with this information and print it.
- ALTUSDRIVE.com navigation and menu options will vary by device and/or operating system (PC, mobile, etc).
- To view and/or print the Vehicle System Report using ALTUS, a PDF file type viewer is needed.

Using a PC - Typical

1. Login to your ALTUS account at ALTUSDrive.com.
2. Find the Vehicle System Report to print, and then select the menu icon on the card (upper right) (Figure 10).
3. Select Download (Figure 10).

Once downloaded, you can print or share the report from your device.

Using a Mobile Device - Typical

1. Login to your ALTUS account at ALTUSDrive.com.
2. Find the Vehicle System Report to print, and tap it (Figure 11 - A) to open the report detail card.
3. Tap the report again (Figure 11 - B). This may either start an automatic download or open the report in a new browser tab (Figure 11 - C). If needed, tap and hold the report (Figure 11 - D) to display the options menu and select the applicable option to download the file.

Once downloaded to your device, print the report.

Note: If you do not have print capabilities on your device, you may be able to download or transfer/share the file to another device with print capabilities. Refer to the "User Guide" of your device for printer setup information.

Figure 9

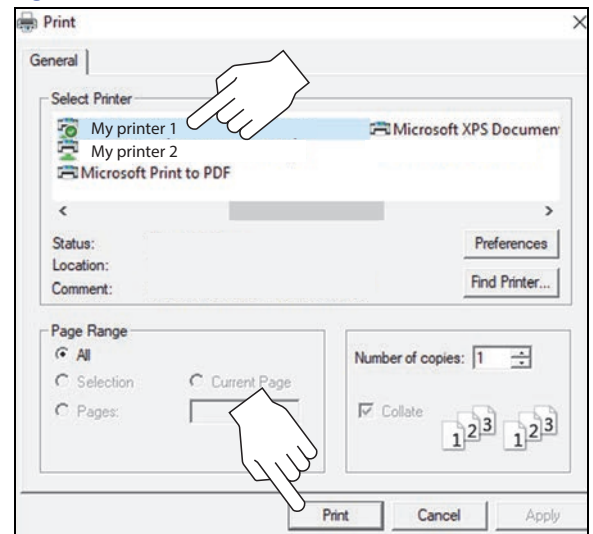


Figure 10

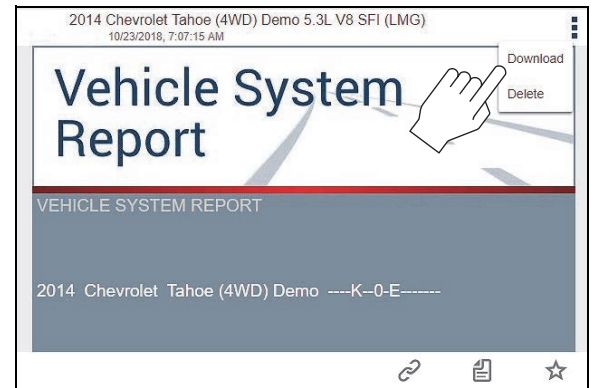
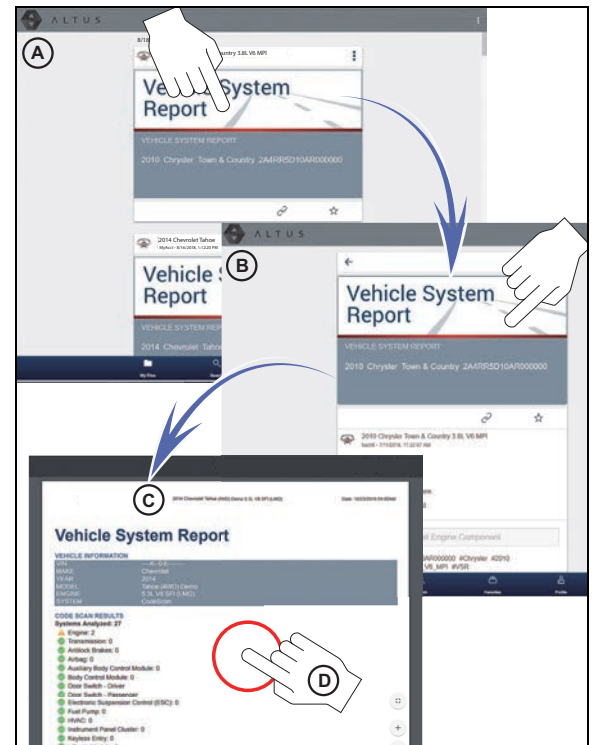


Figure 11



3. ALTUS is available free online at: <http://ALTUSDRIVE.com>
ALTUS registration information is available online at:
<http://diagnostics.snapon.co.uk/usermanuals>