

Snap-on Software Subscription Update Guide

VERUS & ZEUS Platforms



Please Note - new software updates can only be downloaded if you are a current Subscription customer

Updating using the Internet (DUC) Update Tool

Online
Update

What is the Internet (DUC) Update Tool?

A special update application that downloads software upgrades to VERUS and ZEUS tools for subscribed customers

How does the Internet (DUC) Update Tool work?

The Internet (DUC) Update Tool automatically checks to see if a software upgrade has become available for your diagnostic tool. This check occurs when the diagnostic unit is switched on, and then also checks for new software every 4 hours

When a software update is available, the 'DUC' follows a 2-step process; Download & Install

Firstly, the unit will download the update. This is a 'low priority' application, so updates only download when there is unused internet bandwidth available. This should not affect normal use of the tool when carrying out diagnostic work on a vehicle, as the download occurs in the background – unless the 'Priority Download' option is selected; see 'Step 1' for further detail

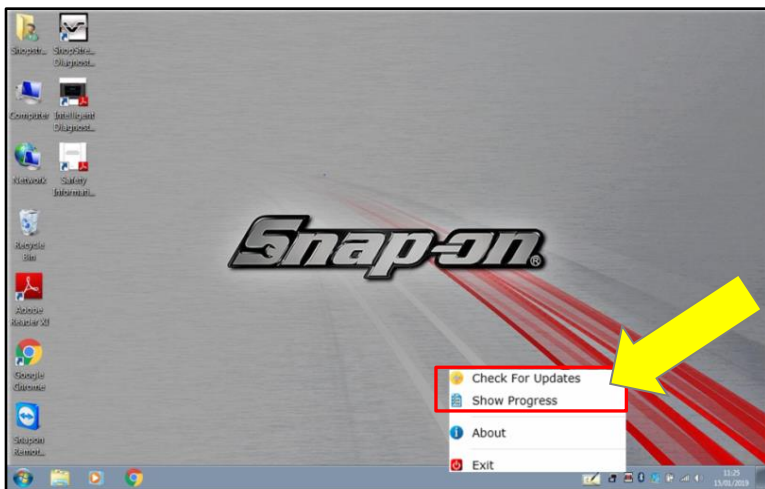
Once the software has downloaded to your unit, you can then choose when to install the update; see 'Step 2' for further detail

Step 1: Downloading the new Software

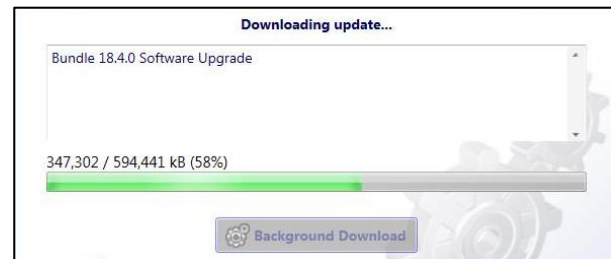
The Internet (DUC) update tool is located in the right-hand corner of the Windows task bar.

When the diagnostic unit is connected to the internet it first performs a software check. If it finds an upgrade, it will begin to download the software – the DUC update icon will change to red 

Download time is approximately 4 hours but will vary depending on your internet connection speed. You can check the progress of this by clicking the DUC update icon and selecting 'Show Progress':

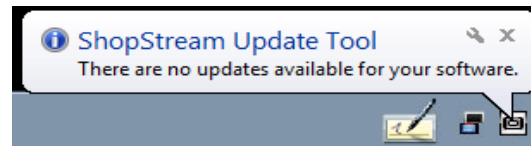


If an update is in progress, you will see the below 'status' information:

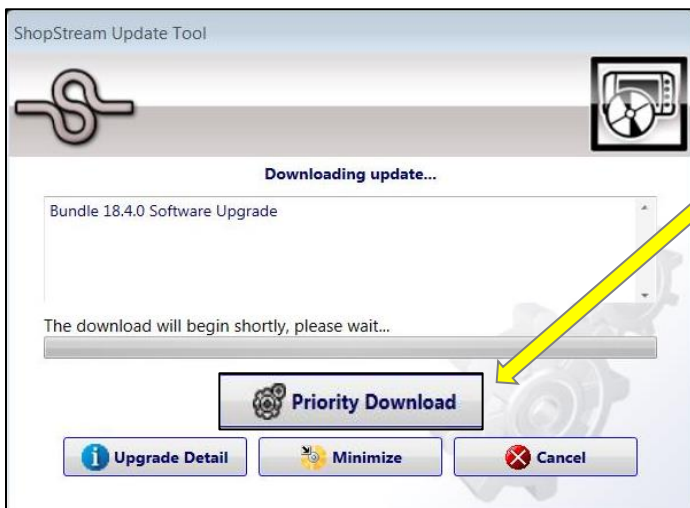


Alternatively, you can check for updates by clicking on the DUC update icon and selecting 'Check for Updates'

If no updates are available, you will see this message:



If an update is available, the update window will open, and the download will start automatically:

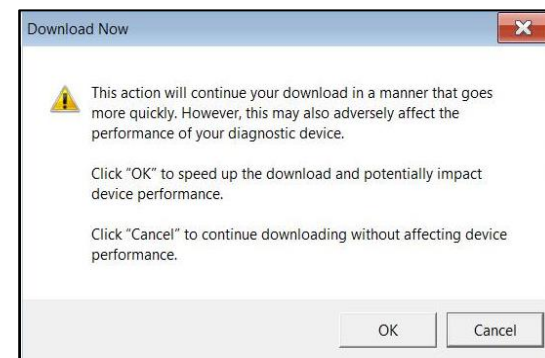


'Priority Download' will also be available - selecting this will speed up download time



However, this may slow down the diagnostic suite's performance if the unit is used during the download

If you would still like to speed up download time, select the 'Priority Download' option. A new window will open – click 'OK' to proceed:



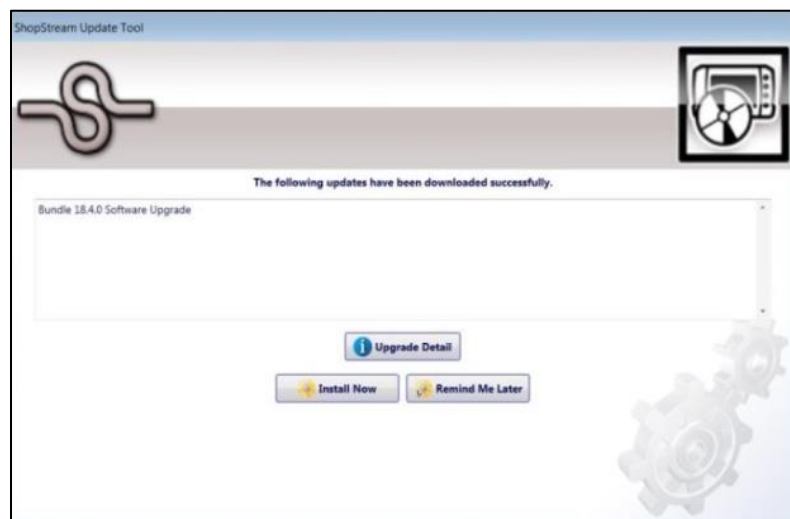
Step 2: Installing the new Software

Once the new software update has successfully downloaded to your unit, a new window will automatically open on-screen to confirm and allow you to install this



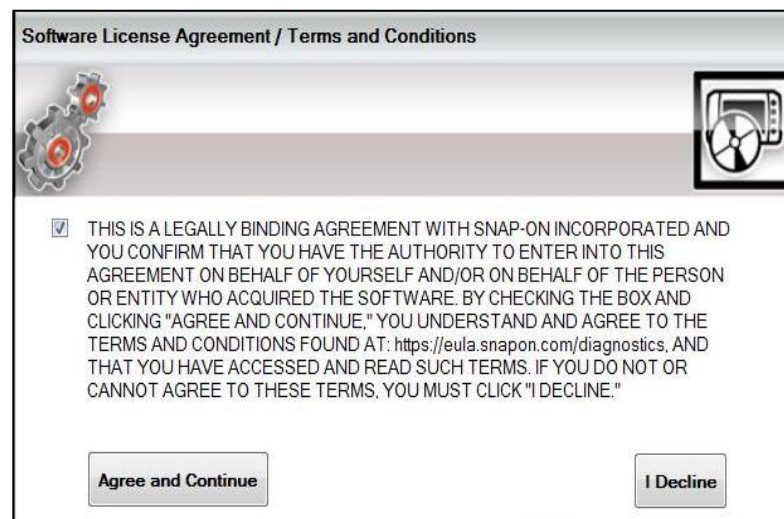
Before you continue to install the new software, please ensure your diagnostic unit is plugged into the mains

1. Click on the 'Install Now' option:



2. Review Software License Agreement/Terms and conditions, then click on 'Agree and Continue' install the software:

Agree and Continue



Once the installation is complete, an update message will appear on screen to confirm the software has been successfully updated:



Now connect your S3 or S5 Wireless Scanner Module using USB cable supplied with your kit (P/N:EAXZ0068L02A) to your VERUS or ZEUS platform:



S5 Module
(Zeus)



S3 Module
(Verus/Verdict)



Please note - new Firmware must be installed for your platform to function correctly

Click on “Update Now” to install firmware to Scan module (this can take approx. 5 minutes)



Once the software has installed to the scan module, a message will appear advising this has succeeded.

You're now ready to use your new software!

If you encounter any issues throughout this process, please contact
Snap-on Diagnostics Customer Care on **0845 606 6512**
Available - Monday to Friday 8.30 AM to 5.00 PM