



ZEUS™, VERUS® and VERDICT® Diagnostic Tools

ShopStream Update Tool Fast Download Option for Software Update/Upgrades

The ShopStream Update Tool (SST) automatically keeps your diagnostic software up-to-date. When connected to the Internet, the SST automatically checks for diagnostic software service releases and upgrades, and downloads them. Software downloads normally occur in the Windows background as low priority, so they do not interfere with other programs using Wi-Fi.

A **Fast Download** option has been added to reduce software download time.

Note: To manually check for software updates, select the SST icon in the Windows system tray (**Figure 1**).

During an active download, the following options are now available from the download status window.

- **Fast Download** (**Figure 2**)—selecting Fast Download provides the option to either initiate a faster download, or continue downloading in the background. If Fast Download is selected, it may potentially impact diagnostic tool performance, only choose if you are not actively using the Diagnostic Suite.
- **Minimize**—closes the message box. The download continues as a background task and the diagnostic tool may be used without potential performance impact. Select **Show Progress** from the SST icon menu at any time to reopen the message box and check the status of the download.
- **Cancel**—stops and cancels the download and closes the message box. If you select Cancel, and choose to re-start the download again, the download will start from the beginning.

Figure 1

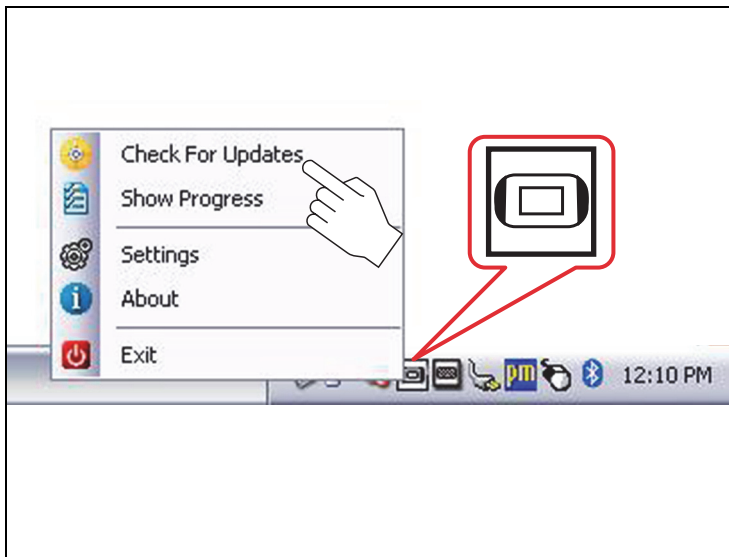


Figure 2

