



**“ShopKey Pro  
is the ONE source I need for OEM  
information and real-world solutions.”**

## **Get to the Fix Faster With Confidence**

In a fast moving auto repair shop, you need auto repair information tools that work like you do – a powerful software solution that will steer you in the right direction for an accurate diagnosis and faster repair. A single lookup in **ShopKey® Pro** will get you there. As the gold standard in auto repair information, ShopKey Pro provides complete OEM information and exclusive real-world expert knowledge to help you work faster and smarter.

**SureTrack®**, the diagnostic information resource inside ShopKey Pro, delivers Real Fixes based on a database of millions of actual repairs completed by professional technicians. Once you’ve got your diagnosis, it’s simple to write an estimate and access all the OEM factory-sourced service information to complete the repair.

With the advanced **1Search™ Plus** feature, SureTrack information is fully integrated with the OEM information, making your diagnosis and repair as simple as one lookup. You’ll quickly find related Technical Service Bulletins (TSBs), Real Fixes, specifications, component test information, color wiring diagrams, and removal/replace procedures brought back together for ease of navigation. ShopKey Pro is the most trusted source of complete OEM and real-world information, integrated together, from one provider.

***ShopKey Pro helps make your job easier, more efficient, and just plain smart.***

# Features that help maximize your shop's productivity

## ► 1Search Plus

To improve your information lookup, 1Search Plus returns information in a unique graphical layout aligned with the way a technician thinks about diagnosis and repair. OEM and real-world information are fully integrated, reducing your navigation time. All results are returned in specific categories, leading you directly to the information you want and cutting out the clutter.

## ► Advanced Interactive Wiring Diagrams

Navigate directly to component information without a secondary lookup. Component names shown in the wiring diagrams are active links that take you straight to the information you need — like location, connector views and replacement procedures.

## ► ADAS – Driver Assist

ShopKey Pro makes it quick and easy to diagnose, calibrate and repair vehicles equipped with Advanced Driver Assistance Systems (ADAS) features. Simply select a vehicle and click the Driver Assist | ADAS quick link button, and you have immediate access to a table that consolidates all the ADAS information.

## ► Quick Links

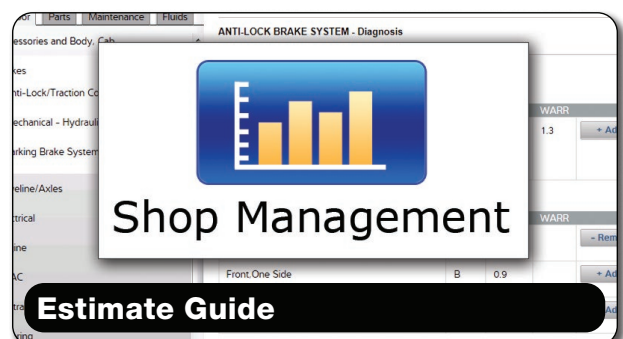
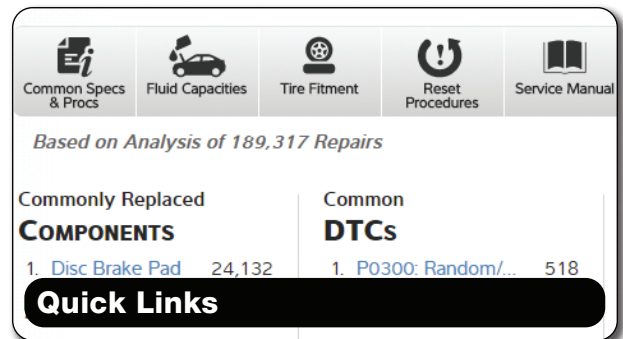
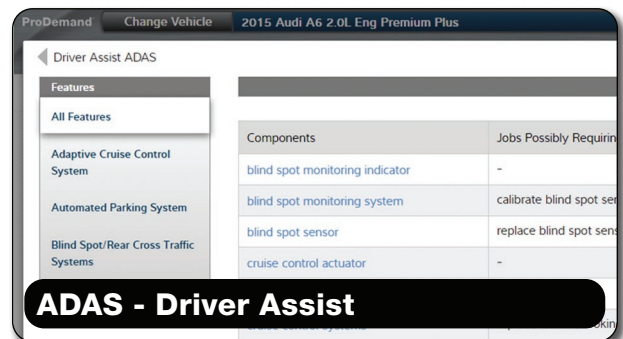
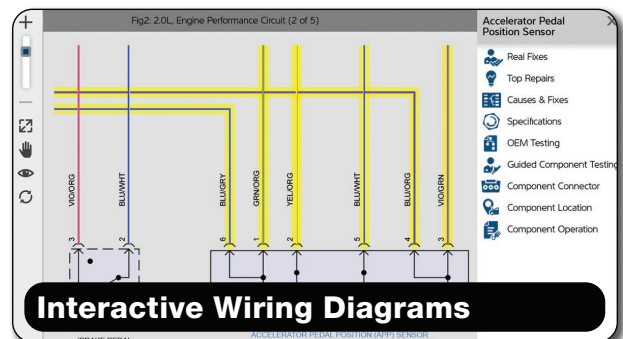
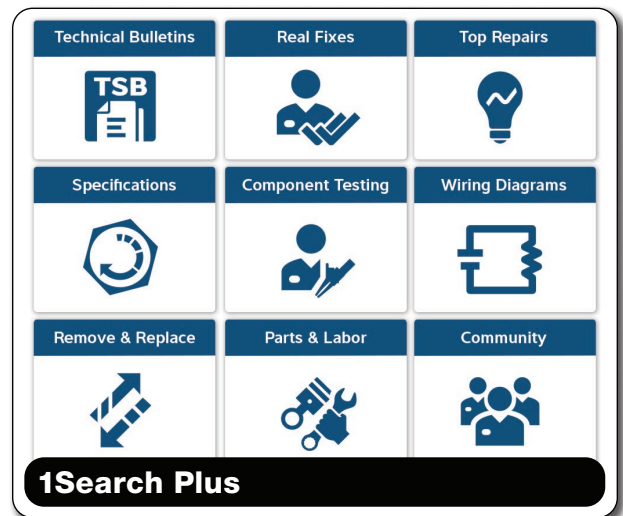
Quickly find the most popular content in ShopKey Pro, including fluids, tire fitment, reset procedures, wiring diagrams, component tests and locations, Diagnostic Trouble Codes (DTCs) and TSBs.

## ► Top 10 Dashboard

With this exclusive feature, ShopKey Pro provides a powerful head start to an accurate diagnosis, based on collective knowledge from millions of actual repairs and insights from professional technicians. With every lookup, ShopKey Pro organizes the most common issues for the current vehicle into an easy-to-use list arranged by category, including components, codes, symptoms and lookups.

## ► Estimate Guide

Build accurate, profitable estimates quickly and easily with the only OEM repair information software integrated with the industry's most trusted shop management system.



# SURETRACK

## The ultimate diagnostic resource

SureTrack is an industry-leading source of expert knowledge for professional technicians, and it's included at no additional cost with your ShopKey Pro subscription. Combining real-world experience with powerful diagnostic tools, SureTrack helps you diagnose and repair vehicles more accurately and efficiently than ever before.

### ▶ Integrated With OEM Repair Information

OEM and real-world content are provided at the same time, delivering your answers in one place.

### ▶ Top Repairs

Start your diagnosis with insights from the most common procedures for the selected vehicle based on code, symptom, component and mileage.

### ▶ Real Fixes

Find the fix with expert-based knowledge captured from over 1 billion completed repairs and real-world tips from professional technicians.

### ▶ Component Test Information

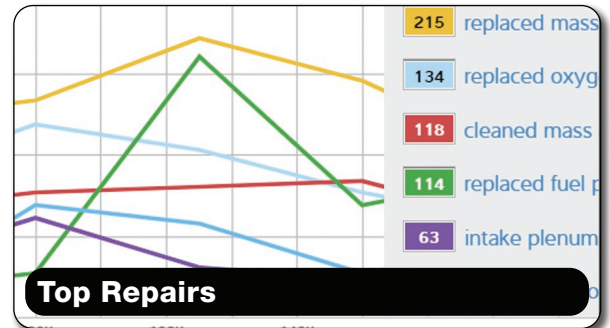
Component operation, location, best test location, connector end views and test procedures provide all the information needed to verify if the component is operating properly or failing.

### ▶ Causes & Fixes

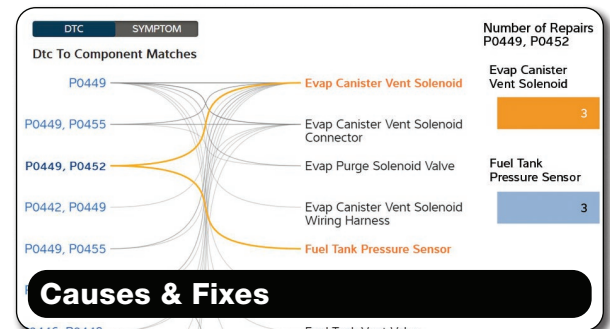
A color-coded graph shows the relationship between codes and symptoms to components, making it easier to diagnose multiple codes returned together.

### ▶ Community of Technicians

You're likely not the first person to come across that difficult-to-diagnose code or symptom. Use the SureTrack Community as a collaborative tool to ask a question to automotive experts to help you move forward.



A screenshot of the 'SURETRACK COMMUNITY' interface. It displays a list of 'All Submissions' with columns for 'Questions', 'Filters', and 'All Vehicles'. Two example submissions are shown: one for a 2011 Volkswagen Tiguan SEL 2.0L Eng with the issue 'not stay running p0087' and another for a 1999 Dodge Pickup R1500 5.9L Eng VIN Z with the issue 'intermittent rough idle and dies sometimes'. Each submission shows the creator, creation date, and the number of replies and views.



# MORE OPTIONS FROM SHOPKEY

## Complete information tools to drive efficiency and profits

**Shop Management** — Our industry-leading auto shop management solution helps mechanical shops streamline workflow and track activity from estimate to invoice. With the largest choice of electronic parts catalogs (including tires), an interactive Work-in-Progress dashboard and over 180 integrated reports, ShopKey® Shop Management provides a 360° view of the entire operation so you can manage every aspect of your business more efficiently and profitably.

## Powerful options to supercharge your shop

**ProSpect™** — Greet customers with a convenient portable vehicle check-in and inspection solution, integrated with ShopKey Shop Management.

**MessageCenter** — Adds seamlessly integrated two-way texting inside the Shop Management software, so you never have to leave dashboard.

**Truck Edition** — Upgrades ShopKey Shop Management to include Class 4-8 models for medium and heavy-duty trucks.

**SocialCRM** — Grow your business by automating your marketing, reputation management, social media and customer communication efforts. Retain current customers and acquire new ones with state-of-the-art shop marketing tools, including targeted promotions, text and email campaigns, verified customer reviews, Internet search optimization and social media marketing services. Our LocalSearch service helps to enhance your online visibility with premium features, including a professional business website, automated blog content, services, to help you optimize your Google Business Profile, and much more.





## LEARN MORE



More information  
is available at  
[snapon.com/shopkey](https://snapon.com/shopkey)



See your Snap-on® Franchisee or other sales representative,  
or complete the form to request someone contact you at  
[snapon.com/diagnostics/productinfo](https://snapon.com/diagnostics/productinfo)

## CUSTOMER CARE

Support is at your fingertips to ensure you get the most out of your ShopKey products.  
E-mail [shopkeysupport@snapon.com](mailto:shopkeysupport@snapon.com) or call 800-944-3877 for access to our technical experts.

©2024 Snap-on Incorporated. All rights reserved. ShopKey and Snap-on are registered trademarks, registered in the United States and other countries, of Snap-on Incorporated. All other marks are trademarks or registered trademarks of their respective holders. Pictures are for illustration purposes only. Specifications are subject to change without notice.

EAZ0074L10F

